

■ Aluminum swing arm

GROM / MSX125



**JAPAN
MADE**

Uses a hexagonal cross-sectional shape pipe of 50mm x 28mm to the arm portion.
Adopted the high rigidity cross section pipe at arm bridge portion.

By buffing to the swing arm, increases the presence at the time of mounting.

Equipped with a dedicated adjuster which has excellent maintainability.

Fender stay for stock rear fender is included.

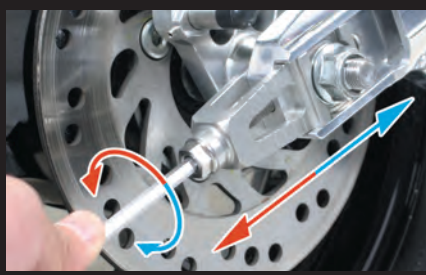
■ Please use stock chain slider and axle shafts.

■ Choose from with stabilizer or without it.

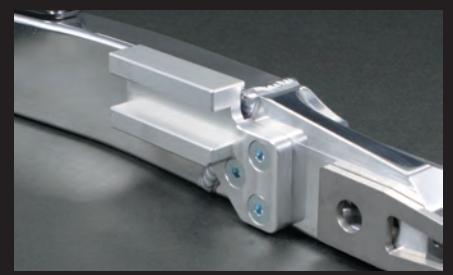
※ Since it will be 15mm long than stock one, need to replace the drive chain.



High-strength arm bridge



Chain adjuster



Billet stopper



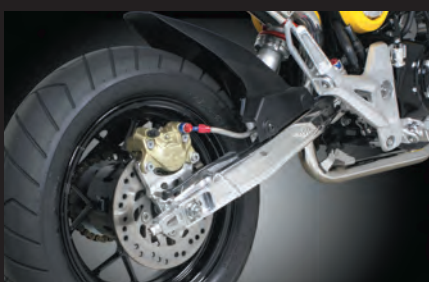
Item No. 06-03-0132



Item No. 06-03-0131



Fender stay(for stock fender)



High-strength stabilizer

Name	Aluminum swing arm
Applicable model	GROM(JC61-1000001~) MSX125(MLHJC6181D5000001~)
Item number	w/o stabilizer less 06-03-0132 w/ stabilizer 06-03-0131