

■ Various dress up plated cover

For Majesty S

All cover is made of the ABS.

All cover is treated to be beautiful gloss plating.

Lineup: air duct cover; meter cover; tail lamp cover and rear turn signal cover; filter cover trim; air cleaner cover; clutch cover.

※ For mounting the air duct cover, Torx wrench (T25) is required.

■ Meter cover, tail cover, rear turn signal cover will be placed over the genuine parts and secure with double-sided tape.

■ Filter cover trim and air cleaner cover will be placed over the genuine parts and attach it by re-using the genuine screws.

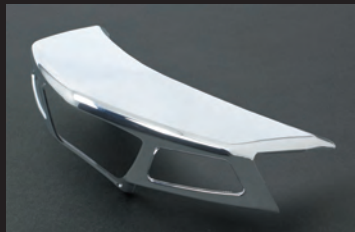
■ Clutch cover: Remove the stock clutch cover and attach our clutch cover by re-using the stock bolts.



Air duct cover (09-11-0145)



Meter cover (09-11-0146)



Tail lamp cover (09-11-0148)



Rear turn signal cover (09-11-0149)



Filter cover trim(09-11-0150)



Air cleaner cover (09-11-0152)



Clutch cover (09-11-0153)



Name	Air duct cover
Applicable model	Majesty S(SG28J)
Item number	09-11-0145

Name	Meter cover
Applicable model	Majesty S(SG28J)
Item number	09-11-0146

Name	Tail lamp cover
Applicable model	Majesty S(SG28J)
Item number	09-11-0148

Name	Rear winker cover
Applicable model	Majesty S(SG28J)
Item number	09-11-0149

Name	Filter cover trim
Applicable model	Majesty S(SG28J)
Item number	09-11-0150

Name	Air cleaner cover
Applicable model	Majesty S(SG28J)
Item number	09-11-0152

Name	Clutch cover
Applicable model	Majesty S(SG28J)
Item number	09-11-0153