

■ Φ27 Front Fork Kit (TYPE-2) (for 8 inch Wheel/Front Drum Brake)

Monkey · Gorilla · Monkey(FI)

The front fork kit that can enhance the followability of the road surface as well as shock absorption from the road surface and enjoy stable running.



06-01-0076



■ Φ27 Front Fork Kit (TYPE-2)(for 8 inch Wheel/Front Drum Brake)

■ Top bridge, steering stem

Duralumin billet anodized. Holed and lighten processing.

The stock front fender can be mounted on the steering stem. Steering lock bracket included.

Available in two type of offsets: 40 mm offset and 60 mm offset from stem center to fork center

The 60 mm offset type can be made to be the optimum wheel base corresponding to big torque at large displacement, improving steering stability.

40 mm offset type can be chose from silver or black. 60 mm offset type available in silver only.

For Monkey, available in folding handle type and bar handle type.

For Gorillas and other , available in bar handle type only.

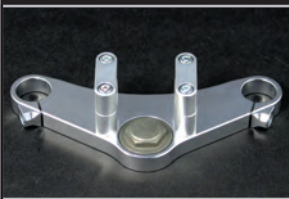
For folding handle type is included a custom top bridge which can keep stock looks.

For monkey · gorilla bar handle type only,Monkey need to remove the stock folding handlebar and need to attach a regular bar handle pipe. Gorilla can use stock handle bar.

■ For drum brake type

Use the custom brake panel and brake arm.And the drum brake hub and brake shoe remains the stock.

It will be custom looks different from the stock. The brake panel adopts the aluminum cast barrel finish, the brake arm adopts the aluminum forged buff finish.Front brake cable are included.



Top bridge(Silver)



Steering stem(Silver)



Top bridge(Black)



Brake panel/Brake arm

■ The parts you have to buy ※Please see more detail about extra parts on our WEB catalog.

■ Brake lever ASSY. 06-08-3002 or Quick Brake lever 06-08-3005

■ Headlight stay for Φ27 front fork 09-03-007

■ Turn signal stay for Φ27 front fork 05-08-0002 ※You can install stock or our custom turn signal.

■ When making a monkey as a bar handle style or if you don't want to use a stock handle with a gorilla, you need to purchase a handle pipe separately in both cases.

We have variety of handle pipes are available.

■ May need to replace the speedometer cable, depending on the type of handle bar.

■ Need our custom hi-throttle kit.※It depends on the carburetor used.

For Monkey (FI) hi-throttle (no cable) 09-02-0223 is required.

■ Monkey chassis # No. Z50J-1300017 to 1510400, the following parts are required.

Combination Switch ASSY. 02-01-015

In the case of a manual clutch, clutch lever and handle switch holder 02-01-015 is required.

With our Special clutch cover, need to use standard clutch lever ASSY. (Black) 02-01-028

For stock(genuine)clutch cover, need to have standard clutch lever & cable set.

There are wide variety of cable and lever from us.

■ Recommend parts with this kit. ※See more detail information on our Web catalog.

■ Can be used with stock 8 inch wheel.

■ 8inch Aluminum wheel (Tube type) 1-piece

Polish (2.5J:06-09-131 / 3.5J:06-09-1304) Blue-Black (2.5J:06-09-153 / 3.5J:06-09-1504)

Black (2.5J:06-09-0219 / 3.5J:06-09-0220) ■ For drum brake, possible to use 3.5J wheel.

■ Our 40mm longer extend swing arm. ■ Rear shock absorber (280mm)



For Monkey stock folding handle



For Bar handle

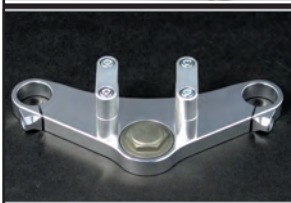
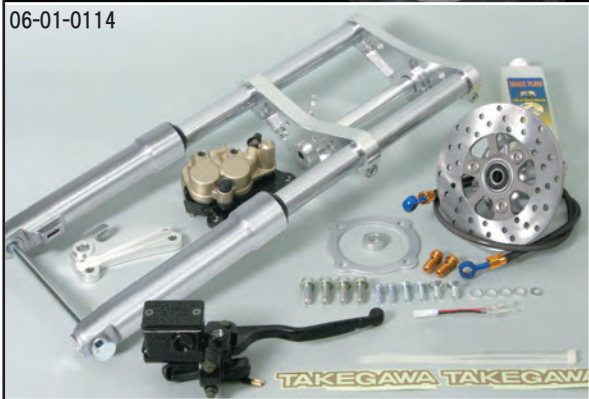
Name	Φ27 Front Fork Kit (TYPE-2) (for 8 inch Wheel/Front Drum Brake) (The target handle is a Monkey stock folding handle)		
Applicable model	Monkey (Z50J-1300017~ / AB27-1000001~1899999) Monkey (FI) (AB27-1900001~)		
Item number	Top bridge & Steering stem Color (Silver) Offset 40mm	Item number:06-01-0076	
	Top bridge & Steering stem Color (Black) Offset 40mm	Item number:06-01-0077	
	Top bridge & Steering stem Color (Silver) Offset 60mm	Item number:06-01-0078	

Name	Φ27 Front Fork Kit (TYPE-2) (for 8 inch Wheel/Front Drum Brake) (The target handle is a bar handle)		
Applicable model	Monkey · Gorilla (Z50J-1300017~ / AB27-1000001~1899999) Monkey (FI) (AB27-1900001~)		
Item number	Top bridge & Steering stem Color (Silver) Offset 40mm	Item number:06-01-0079	
	Top bridge & Steering stem Color (Black) Offset 40mm	Item number:06-01-0080	
	Top bridge & Steering stem Color (Silver) Offset 60mm	Item number:06-01-0081	

■ Φ 27 Front Fork Kit (TYPE-2)
(for 8 inch Wheel/Front Disc Brake)

Monkey · Gorilla · Monkey (FI)

The front fork kit that can enhance the followability of the road surface as well as shock absorption from the road surface and enjoy stable running.



Top bridge(Silver)



Steering stem(Silver)



Top bridge(Black)



Wheel hub



For Monkey stock folding handle



For Bar handle

■ Φ 27 Front Fork Kit (TYPE-2)(for 8 inch Wheel/Front Disc Brake)

- Top bridge, steering stem : Duralumin billet anodized. Holed and lighten processing. Steering lock bracket included. Available in two type of offsets: 40 mm offset and 60 mm offset from stem center to fork center. The 60 mm offset type can be made to be the optimum wheel base corresponding to big torque at large displacement, improving steering stability.
- 40 mm offset type can be chose from silver or black. 60 mm offset type available in silver only. For Monkey, available in folding handle type and bar handle type. For Gorillas and other, available in bar handle type only. For folding handle type is included a custom top bridge which can keep stock looks. For monkey · gorilla bar handle type only, Monkey need to remove the stock folding handlebar and need to attach a regular bar handle pipe. Gorilla can use stock handle bar.
- Disc brake up grade
Die-cast lightweight wheel hub (barrel finish) and stainless disc rotor.
Mono pice disc rotor made from durable stainless steel.

■ The parts you have to buy ※Please see more detail about extra parts on our WEB catalog.

- Brake lever ASSY. 06-08-3002 or Quick Brake lever 06-08-3005
- Headlight stay for Φ 27 front fork 09-03-007
- Turn signal stay for Φ 27 front fork 05-08-0002 ※You can install stock or our custom turn signal.
- When making a monkey as a bar handle style or if you don't want to use a stock handle with a gorilla, you need to purchase a handle pipe separately in both cases. We have variety of handle pipes are available
- May need to replace the speedometer cable, depending on the type of handle bar.
- Need our custom hi-throttle kit.※It depends on the carburetor used.
For Monkey (FI) hi-throttle (no cable) 09-02-0223 is required.
- Monkey chassis # No. Z50J-1300017 to 1510400, the following parts are required.
Combination Switch ASSY. 02-01-015
In the case of a manual clutch, clutch lever and handle switch holder 02-01-015 is required.
With our Special clutch cover, need to use standard clutch lever ASSY. (Black) 02-01-028
For stock(genuine)clutch cover, need to have standard clutch lever & cable set.
There are wide variety of cable and lever from us.

■ Recommend parts with this kit. ※See more detail information on our Web catalog.

- Can be used with stock 8 inch wheel.
- 8inch Aluminum wheel (Tube type) 1-piece
Polish (2.5J:06-09-131 / 3.5J:06-09-1304) Blue-Black (2.5J:06-09-153 / 3.5J:06-09-1504)
Black (2.5J:06-09-0219 / 3.5J:06-09-0220)
※Disc brake up grade is not fit with 3.5J front wheel.
- Our 40mm longer extend swing arm.
- Rear shock absorber (280mm)

Name	Φ 27 Front Fork Kit (TYPE-2) (for 8 inch Wheel/Front Disc Brake) (The target handle is a Monkey stock folding handle)		
Applicable model	Monkey (Z50J-1300017 ~ / AB27-1000001 ~ 1899999) Monkey (FI) (AB27-1900001 ~)		
Item number	Top bridge & Steering stem Color (Silver) Offset 40mm	Item number:06-01-0114	
	Top bridge & Steering stem Color (Black) Offset 40mm	Item number:06-01-0115	
	Top bridge & Steering stem Color (Silver) Offset 60mm	Item number:06-01-0116	

Name	Φ 27 Front Fork Kit (TYPE-2) (for 8 inch Wheel/Front Disc Brake) (The target handle is a bar handle)		
Applicable model	Monkey · Gorilla (Z50J-1300017 ~ / AB27-1000001 ~ 1899999) Monkey (FI) (AB27-1900001 ~)		
Item number	Top bridge & Steering stem Color (Silver) Offset 40mm	Item number:06-01-0117	
	Top bridge & Steering stem Color (Black) Offset 40mm	Item number:06-01-0118	
	Top bridge & Steering stem Color (Silver) Offset 60mm	Item number:06-01-0119	