

■ Super cam chain tensioner

**Monkey·Gorilla·Monkey R/RT·Monkey(FI)  
Chaly·DAX50/70·MAGNA50  
Super Cub (except AA04, JA07 and up) type air cooled horizontal engine**

**All NEW high-intensity cam chain tensioner that can keep tracking and proper tension of the cam chain!**

It is a high strength cam chain tensioner which highest quality of billet alloy exactly and hard anodized.

Super cam chain tensioner arm elaborately cuts out high quality alloy with high strength, increases the strength of the arm body by increasing the thickness, and further increases the contact area to the push rod. Also, an oil hole is provided in the arm body to lubricate the oil to the shaft.

■ Comparison of genuine and our company's tensioner arm.

Due to genuine tensioner arm is molded by steel plate, the contact area to the push rod is not large enough, and the rubber at the tip of the push rod damaged into the form of plate thickness.

Also, when used for a long time and high power engine, the deformation of the genuine tensioner arm becomes severe, which may damage the push rod head. In this case, proper tension is not applied to the cam chain and it may cause engine trouble.

Super cam chain tensioner arm elaborately cuts out high quality alloy with high strength, increases the strength of the arm body by increasing the thickness, and further increases the contact area to the push rod. This makes not only strengthens the tensioner arm but also reduces the collapse and breakage of the rubber at the tip of the push rod, greatly improving the lifetime of the push rod.

Also, an oil hole is provided in the arm body to lubricate the oil to the shaft.

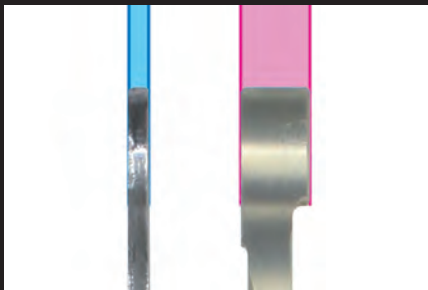
※Please make sure to use along with genuine or our push rod head which moderate damper effect.

■ Cam chain tensioner push rod head 00-01-0279

Heavy duty push rod head which sold by other after market manufacturers cause a large load on the cam chain and may cause the engine trouble, please do not install simultaneously.

■ Weight comparison of the stock tensioner arm and "Super cam tensioner arm". (Roller and shim ring are not included)

"Super cam tensioner arm" approx 28 g compare with stock tensioner arm approx. 37 g, Its about 24% lighter than stock,



Comparison of push rod contact area.  
Left: genuine / Right: Takegawa



Comparison of push rod contact area.  
Left: genuine / Right: Takegawa



Adopted an oil hole in arm moving part.



Name	Super cam chain tensioner
Applicable model	Monkey·Gorilla (Z50J-1000001~ / AB27-1000001~1899999) Monkey R/RT Monkey (FI) Chaly DAX50/70 MAGNA50 Little cub Super cub (C50-N0000002~/AA01-1000001~) ※Super Cub (except AA04, JA07 and up) type air cooled horizontal engine
Item number	01-14-0008