

■ Special Clutch Kit(Slipper Clutch)

KSR110-KSR PRO-KLX110-Z125 PRO

Special Clutch [6-Disc]



Wire type



Large diameter oil filler cap



Oil level check window



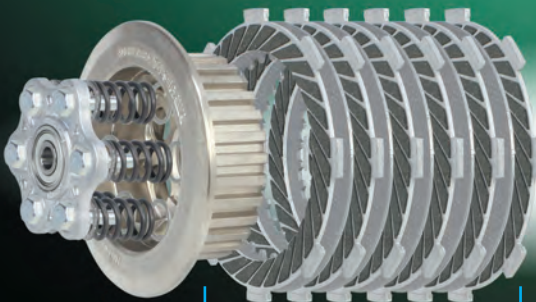
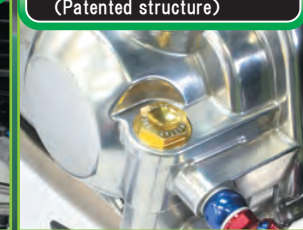
Optional Parts

■ Oil outlet for the oil cooler

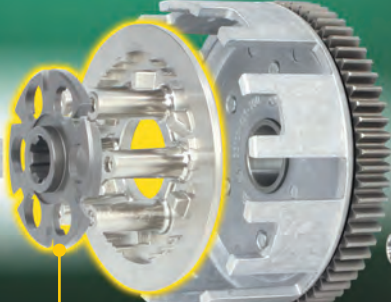


Optional Parts

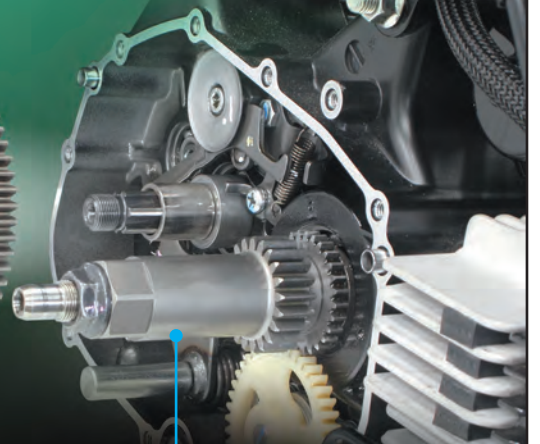
■ Thermostat can be mounted (Patented structure)



■ 6disc type for hi-performance engine.
Made by Kevlar formulated friction 6 disks.



■ Slipper Clutch
The slipper clutch reduce the shock of a sudden engine brake due to the shift down at high speed.



■ Primary drive gear
Primary reduction ratio up to 14%(21T)

Special Clutch Kit(Slipper Clutch)

KSR110-KSR PRO-KLX110-Z125 PRO



Clutch cover



Wire type



Large diameter oil filler cap



Oil level check window



Special clutch inner kit(Slipper Clutch)



Optional Parts

Oil outlet for the oil cooler



Optional Parts

Thermostat unit can be mounted



Special Clutch Kit(Wire type/Slipper Clutch)for KSR110
02-01-0398



Special Clutch Kit(Wire type/Slipper Clutch)for Z125 PRO
02-01-0399

Special Clutch cover(Wire type)

Special Clutch cover(Alloy die cast)

It's beautifully clear coated on the polished aluminum die-cast cover body.
" TAKEGAWA " logo is on this clutch cover.

Wire type

For wire type, clutch cable uses light and smooth activate with Rack & Pinion type.
Stable clutch work can be done.

Patented structure of clutch cover (Thermostat mounting portion and the oil line structure)

Adopted the patented structure of clutch cover which can be installed our thermostat unit.
By the original oil line structure, you can also use thermostat unit (optional) to keeps engine temperature appropriately.

How to operate the thermostat unit: When the oil temperature rises (over 70 degrees), the shape memory alloy spring in the thermostat unit elongates, closes the bypass passage of the clutch cover, and changes the flow of oil via the oil cooler.

When the oil temperature is less than 70 degrees, the spring shrinks, then only a small amount of oil flows in the oil cooler, and flows through the bypass passageway.

Thermostat unit 02-01-5052

※Thermostat unit need to use with our oil cooler kit.

Large diameter oil filler cap(Die cast alloy with chrome plated)

Larger diameter oil cap is ideal to easy oil fill.

Oil level check window

Equipped oil level check window that can check the amount of engine oil, which genuine clutch cover doesn't have. Adopted the heavy duty glass for the window.

Oil outlet for the oil cooler

Since the clutch cover body has an oil outlet, oil can be leads to the oil cooler.
If you are not using the oil cooler outlet, use blind plug to plug this outlet hole.

Primary drive gear

It becomes significantly lighter than the genuine primary drive gear, improving the throttle response. The rotation of the crankshaft can be transmitted to the secondary clutch perfectly.

Special clutch inner kit(Slipper Clutch)

By changing the stock clutch (5 disks) to 6 disks, the clutch capacity is increased, so the set load of the spring can be possible to low (by combination with the stock spring), the clutch operation is possible to lighter. It can be used from stock engine to customised engine.

Spring adjustment is possible by the number of springs.

Primary drive gear ratio increase to about 14% by reduction gear.

Slipper Clutch

The slipper clutch reduce the shock of a sudden engine brake due to the shift down at high speed. It is possible to reduce sudden changes in moto posture, hopping rear tires, and burden on the engine.

※Because of the structure of the slipper clutch, slip the clutch occurs when engine start, so it is recommended to use various de-comp camshaft at the same time together.

When using the stock cylinder head of KSR 110 (KL110A) · KLX 110 (LX110A) due to no decompression camshaft available, it may be difficult to start kicking.

※The special slipper clutch kit is available only the cable operate type.

Because of the structure of the hydraulic type clutch cover, it is not possible to install slipper clutches at the same time, so there is no kit available.

※When attaching to KSR 110 (KL110CBF/DDF), KSR PRO (KL110EEF), the clutch lever (included in the kit) may interferes with the combination handle switchbox, but there is no problem with operation.

Optional Parts

Thermostat unit 02-01-5052

By the original oil line structure, you can also use thermostat unit (optional) to keeps engine temperature appropriately.

※Thermostat unit need to use with our oil cooler kit.

Compact cool kit (For Special clutch cover)

The oil cooler kit for vehicles equipped with special clutch cover, the product varies depending on the vehicle, oil cooler mounted position, engine specifications.

Please see the web catalog or WEB SITE for the products lineup.

Name	Special Clutch Kit (Wire type / Slipper Clutch)
Applicable model	KSR110 (KL110A-000001~) KSR110 (KL110CBF) (JKAKL110CCDA00058~) KSR110 (KL110DDF) (KL110D-A57002~) KSR PRO (KL110EEF) (JKAKL110EEDA88121~) Stock clutch lever can be used for KSR PRO
Item number	02-01-0398

Name	Special Clutch Kit (Wire type / Slipper Clutch)
Applicable model	KLX110 (LX110A-A08133~) ※Can not be installed on KLX110 (LX110A-000001~) KLX110L (LX110D-A72046~)
Item number	02-01-0400

Name	Special Clutch Kit (Wire type / Slipper Clutch)
Applicable model	Z125 PRO (BR125H-A02621~) Stock clutch lever can be used for Z125 PRO
Item number	02-01-0399