

# SuperHead 4-Valve(+R) Head COMBO Kit

(VM26/88cc/10-15/H/Decompression)

Product number 01-05-8835

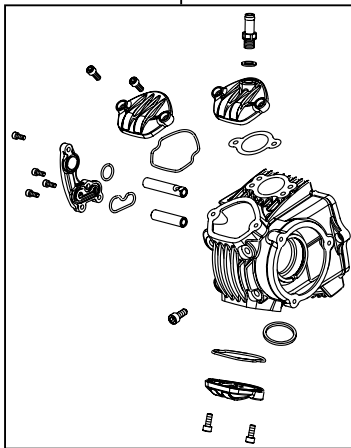
Adaptation model 12V Monkey/Gorilla (Z50J-2000001 ~ )  
(AB27-1000001 ~ 1899999)

- We are flattered that you have purchased one of our products. Please strictly follow the instructions in installing and using the products.
- This is a kit, newly designed for use in the Monkey and Gorilla, consisting of Super head 4VALVE + R, Bore Up (52x41.4 88cc) and Mikuni VM26 carburetor. This product, with a camshaft equipped with an automatic decompression function, is so designed that the engine can start easily.
- Before install the products, please be sure to check the contents of the kit. Should you have any questions about the products, please kindly contact your dealer.

◎ If the description, such as photos or Illustration different with this part.

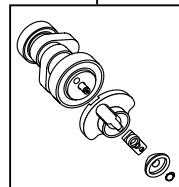
## ~ Kit Contents ~

01-03-0001  
SuperHead 4-Valve+R KIT



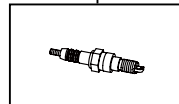
QTY:1

01-08-0141  
Auto-decompression Cam shaft(10/15D)



QTY:1

00-00-2378  
NGK-ER8EH  
Spark plug



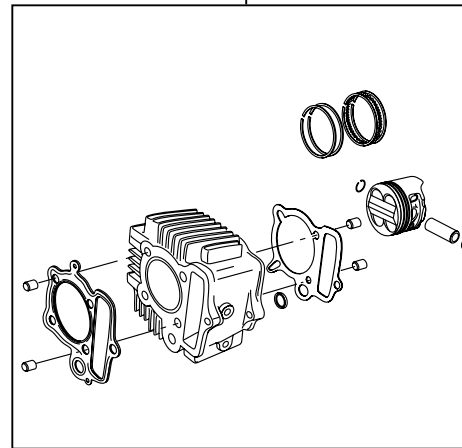
QTY:1

00-00-0247  
Plug socket, 13mm



QTY:1

01-04-8007  
CYLINDER KIT (H-TYPE/88cc)



QTY:1

03-05-0031  
Big carburetor KIT (VM26)



QTY:1

## ☆ Please read carefully before use ☆

- ◎ This product is designed for exclusive use on the closed course.
- ◎ A stock throttle housing cannot be used. So, please prepare a brake lever, etc. separately.
- ◎ We do not take any responsibility for any accident or damage whatsoever arising from the use of the products not in conformity with the instructions in the manual.
- ◎ Due to valve and piston clearance, do NOT use 25/30D and higher profile camshaft for 88cc engine.
- ◎ This kit is designed for exclusive use in the above-mentioned applicable models and frame numbers only. Please take note that this kit cannot be mounted on other models of motorcycles.
- ◎ Please be informed that, mainly because of improvement in performance, design changes, and cost increase, the product specifications and prices are subject to change without prior notice.

**SPECIAL PARTS**  
**TAKEGAWA**

CONTACT Address : 3-5-16 Nishikiorihigashi Tondabayashi Osaka JAPAN  
TEL: +81-721-25-1357 FAX: +81-721-24-5059 e-mail: english@takegawa.co.jp URL: <http://www.takegawa.co.jp>  
Please contact with your name and country name provided. (Only English please)