



Twin Spark Super head+R Bore- & Stroke-up kit, 124cc

- Thank you for purchasing one of our products. Please strictly follow the following instructions in installing and using the kit.
 - This product is a kit for bore- and stroke-up (57x48.5 124cc) for Twin Spark Super Head+R.
- Before assemble the kit, please be sure to check the contents, and to follow instructions for each kit. Should you have any questions about the kit, please kindly contact your local TAKEGAWA dealer.

Item No. : 01 - 06 0005

Compatible models and the frame No.:

Ape100 : HC07-1600001 ~

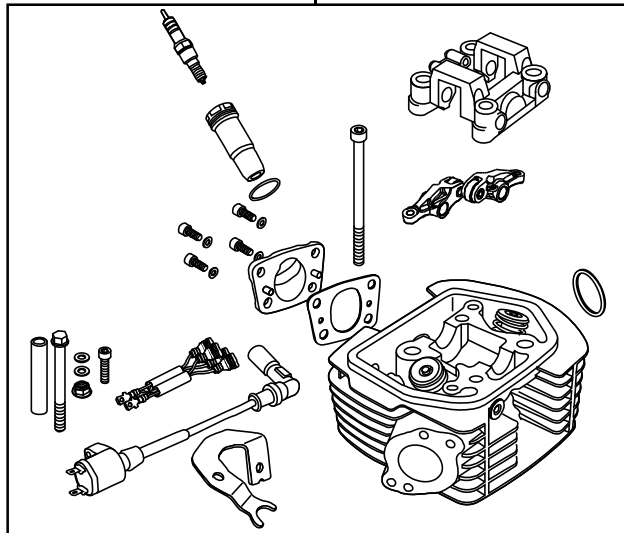
Ape100 Type D : HC13-1000001 ~

(All models need to be equipped with a secondary air supply system.)

Please note that, in some cases, the illustrations and photos may vary from the actual hardware.

~ Kit Contents ~

01-03-0756
Twin Spark Super Head +R kit



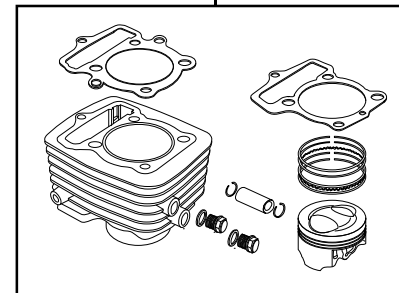
QTY : 1

01-08-0445
SR-25 Camshaft



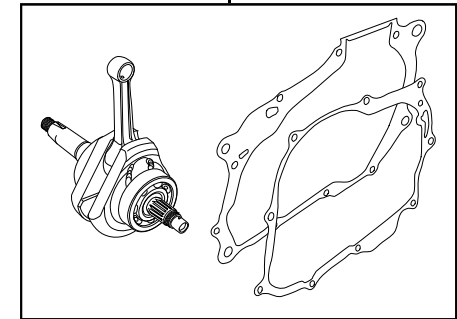
QTY : 1

01-04-1006
57 Plated Cylinder kit



QTY : 1

01-10-0112
Stroke-up crank kit (48.5-stroke)



QTY : 1

Please read the following before starting the installation

This kit is designed for exclusive use in the closed racing course. So, take note that it is prohibited to drive your motorcycle on a public road after the installation of this kit.

We do not take any responsibility for any accident or damage whatsoever arising from the use of the kit not in conformity with the instructions in the manual.

Please note that this kit is designed for exclusive use in the above-mentioned applicable models and frame numbers only and that it cannot be mounted on other models.

Please be informed that, mainly because of improvement in performance, design changes, and cost increase, the product specifications and prices are subject to change without prior notice.

SPECIAL PARTS TAKEGAWA Co.,Ltd.

3-5-16 Nishikiorihigashi Tondabayashi Osaka Japan TEL:81-721-25-1357 FAX:81-721-24-5059 URL:http://www.takegawa.co.jp