

Camshaft Instruction manual

(For exclusive use in SuperHead+R)

Product number	01-08-0119 (S-15D Cam)
	01-08-0120 (S-20D Cam)
	01-08-0121 (S-25D Cam)
	01-08-0122 (S-35D Cam)

Adaptation model	KLX110 :LX110A-000001 ~ :LX110A-A08133 ~
	KSR110 :KL110A-000001 ~ :KL110A-A02833 ~
Requirement	Must equipped with SuperHead+R Bore Up

Thank you for purchasing one of our products.

The cam shaft is dedicated camshaft to maximize the power of the SuperHead + R.

This automatic decompression device enables easy starting of engine.

Before installing the product, please understand and follow the instructions well by going through this instruction manual attentively.

⊙ If the description, such as photos or Illustration different with this part.

☆ Please read carefully before use ☆

⊙ The use ignoring the instructions that are written in the manual, if the accident or damage has occurred, we can not assume any responsibility for compensation.

⊙ This product installation and use, when a problem occurs to after market goods, guarantee other than this product, also can not assume any in any such matters.

⊙ If it was the case or mounting that has been processed like a product, it will not be covered under warranty.

⊙ It is not possible to inquire of the combination of other manufacturers.

⊙ This product is the above-mentioned vehicle exclusive goods. Is not possible attached to the other vehicle. Please note.

⊙ This camshaft is exclusively made for SuperHead + R. Cannot be used with normal (Stock) cylinder heads.

For using with SuperHead + R only.

⊙ This product is designed for exclusive use on the closed course.

⚠ Caution When the handling of ignoring this display, property damage and human shows the assumption of what injury.

■ When performing the work, it should be made to prepare the tools for the job. (Breakage of parts, it may cause injury.)

■ DO use a tachometer to make sure that you drive your motorcycle below the designated engine revolution speed.

(Over revving not only adversely affects the engine but also causes the engine to break down.)

■ Inspection and maintenance should be done regularly. (Failure to inspection and maintenance will cause damage to the engine.)

■ When carrying out the inspection and maintenance, etc., if found damaged parts, replace the damaged parts to avoid possible to reuse the parts. (There is a risk that lead to accidents Continued use.)

⚠ Warning When the handling of ignoring this display people died, shows the contents of the serious injury possibility is assumed.

■ During operation, when an abnormality occurs, immediately stop the vehicle in a safe place, please stop running. (It may lead to an accident.)

■ If you start the engine, be sure in a well-ventilated place. In the sealed such place, please do not start the engine. (There is a risk of carbon monoxide poisoning.)

■ When performing the work, do the work safely stabilize the vehicle in a horizontal location. (There is a risk of injury vehicle collapsed while working.)

⊙ Please note. Performance up, the design change, the product and the price in the cost up, etc. are subject to change without notice.

⊙ Please be informed that we shall be held harmless against any claim against us whatsoever arising out of use of the products in racing and the like.

⊙ Keep this manual stored until this product is discarded.

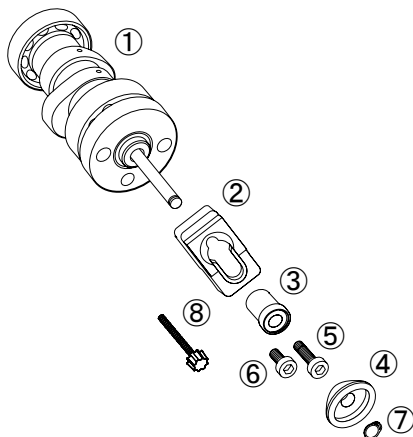
~ Notes on use ~

⊙ Please be sure to refer to the attachment point of the instruction manual of the SuperHead + R mounting work.

⊙ No person knowledge and technology, not your work.

⊙ Refer to the inspection manual of the SuperHead + R, should be periodically checked.

Product content



Please select the appropriate type of cam shaft for your riding purpose.

Number	Product content	Quantity	Item Number
1	Camshaft COMP.	1	_____
2	Weight	1	14103-KL3-T00
3	Collar	1	14106-KL3-T00
4	Plate	1	14104-KL3-T00
5	Socket cap screw, 6x20	1	00-00-0721 (5 pcs)
6	Socket cap screw, 6x12	1	00-00-0717 (5 pcs)
7	Snap ring, 6mm	5	00-01-0255 (5 pcs)
8	Thumb screw, 3x28	1	00-01-0254 (2 pcs)

※ Please order in the repair parts are always repair part number. If it is not the part number order, you may not be able to order. Please be forewarned.

It should be noted, In the case of parts that can not be separately shipment, please order a set part number.

SPECIAL PARTS
TAKEGAWA

CONTACT Address : 3-5-16 Nishikiorihigashi Tondabayashi Osaka JAPAN
TEL: +81-721-25-1357 FAX: +81-721-24-5059 e-mail: english@takegawa.co.jp URL: http://www.takegawa.co.jp
Please contact with your name and country name provided. (Only English please)

Removal

- Remove the cam chain tensioner on the cylinder.



- Remove the cam sprocket.
- Unfasten two screws holding the cam stopper plate on the cylinder head, and remove the cam stopper plate.



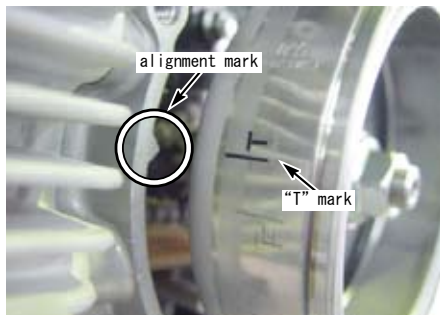
- Pull out the rocker arm shaft facing the intake side, and move the rocker arm towards the tappet hole little by little to remove the camshaft.

(∴ The bearings on the camshaft and those on the rocker arm interfere with each other. Therefore, it is necessary to slightly shift the rocker arm out of place and remove the camshaft.)



Installation

- Align the "T" mark on the flywheel with the alignment mark on the crankcase. And set the piston at the top dead center position.



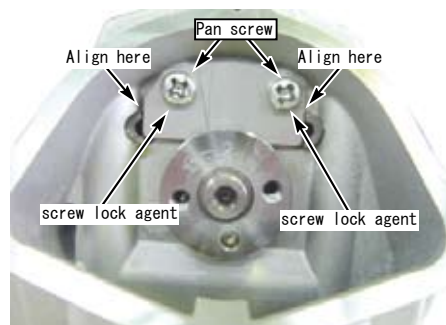
- Pull out the rocker arm shaft facing the intake side for now, and keep the rocker arm, which faces the intake side, shifted toward the tappet hole. And then, install the camshaft on the cylinder head, and re-install both the rocker arm and the rocker arm shaft on the intake side. (∴ The bearings on the camshaft and those on the rocker arm interfere with each other. Therefore, it is necessary to shift the rocker arm out of place bit by bit and install the camshaft.)



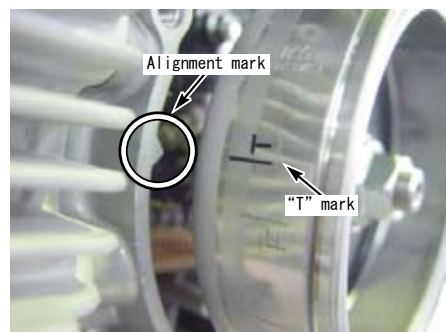
- Attach the cam stopper plate (kit included) to the SuperHead + R with apply lock agent to the pan screws (x2). At this time, align both ends of the cam stopper with the notches on the rocker arm shaft, attach them, and tighten them to the specified torque.

⚠ Note: Be sure that you protect specified torque.

Pan screw
Torque : 8N · m (0.8kgf · m)



- Install the cam chain onto the cam sprocket. Then align the "T" mark on the flywheel with the alignment mark on the crankcase so the "T" mark on the cam sprocket mesh es with the alignment mark on the cylinder head.

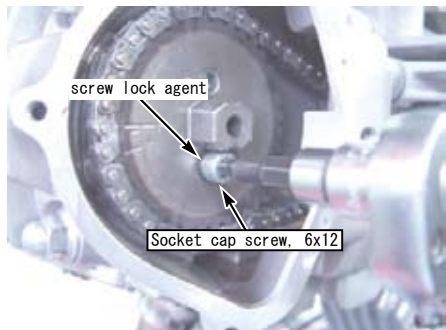


■ Mounting procedure ※ Please refer to the Genuine Service Manual for detailed mounting methods and specified torques that are not specifically described.

- Apply a screw lock agent to the socket cap screw(6x12), place to the EX side of the cam sprocket, and tighten it to the specified torque.

⚠ Note: Be sure that you protect specified torque.

Socket cap screw, 6x12
Torque : 12N · m (1.2kgf · m)



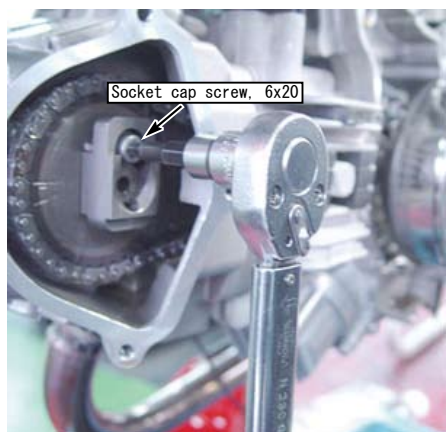
- Apply a screw lock agent to the socket cap screw(6x20), through the collar, and put it in the weight.



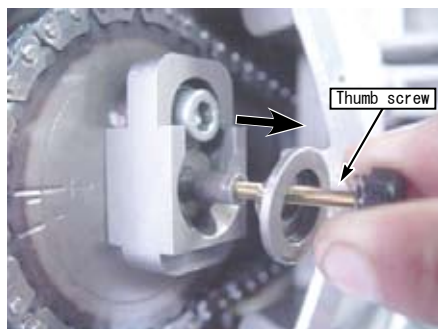
- Put the 6x20 Socket cap screw into the upper hole on the cam sprocket, and tighten the screw to the specified torque.

⚠ Note: Be sure that you protect specified torque.

Socket cap screw, 6x20
Torque : 12N · m (1.2kgf · m)



- Pass a 6mm snap ring and a plate into the supplied 3x28 thumb screw and attach them to the tip of the shaft that is included in the camshaft COMP. And pull them toward you.



- Attach the snap ring in the shaft groove.

⚠ NOTE : Do not expand the snap ring more than necessary.

⚠ WARNING : Always use a NEW snap ring, and be sure NOT to reuse it.



Please refer to the instruction manual of Super Head +R for the further installation.