

Special Clutch Cover Kit TYPE-R (Wet/Hydraulic type) Instruction manual

Product number	02-01-0207 (Black paint)
	02-01-0288 (Silver paint)

Adaptation model Monkey 125 (JB02-1000001 ~)

Thank you very much for purchasing our products.

Thank you so you will comply with the following matters at the time of use. Before installation, please check your always kit contents. If there is a point of notice event, Please contact us the dealer of purchase.

◎ If the description, such as photos or Illustration different with this part.

☆ Please read carefully before use ☆

- ◎ The use ignoring the instructions that are written in the manual, if the accident or damage has occurred, we can not assume any responsibility for compensation.
- ◎ This product installation and use, when a problem occurs to after market goods, guarantee other than this product, also can not assume any in any such matters.
- ◎ If it was the case or mounting that has been processed like a product, it will not be covered under warranty.
- ◎ It is not possible to inquire of the combination of other manufacturers.
- ◎ This product is the above-mentioned vehicle exclusive goods. Is not possible attached to the other vehicle. Please note.
- ◎ Although this product is mainly developed for WET clutch (wet type) specifications, it can be used even for DRY clutch (dry type) specifications without problems.
(Hereinafter, WET clutch specifications will be referred to as "wet type", and DRY clutch specifications will be referred to as "dry type".)
- ◎ Caution: This instruction manual and service manual are intended for people who have basic skills and knowledge. It may not be possible to assemble them correctly and the parts may be damaged if you don't have the necessary skills and knowledge.
- ◎ Please refer to the genuine service manual for the above-mentioned compatible models for the assembly work.
- ◎ Special tools are required to install this product. Please prepare separately.
Lock nut wrench: 00-01-0152 (Takekawa tool) Universal holder: 00-01-1002 (Takekawa tool)
- ◎ Anodic oxide coating products there is a case in which fading occurs in color aging. Please note.
- ◎ Caution: To install this product, you need to install the clutch inner kit (sold separately) and the install the designate transmission at the same time. Please select your kit from the following condition.

Clutch inner kit	Transmission	Remarks
02-02-0081 Special clutch inner kit TYPE-R (Special clutch TYPE-R for close ratio transmission)	02-04-0295 TAF 5-speed close ratio transmission kit (For special clutch TYPE-R)	02-04-0293 When the TAF 5-speed close ratio transmission kit (for stock clutch) ※ 2 is installed, 02-02-0081/0083 can be installed by using 02-04-0296 (TAF 5-speed close ratio transmission conversion kit).
02-02-0083 Special clutch inner kit TYPE-R (Slipper clutch) (Special clutch TYPE-R for close ratio transmission)	※ 1	
02-02-0155 Special clutch inner kit TYPE-R (For stock main shaft)	Stock transmission or 02-04-0292 4-speed close ratio transmission gear set (For stock clutch)	02-04-0293 02-02-0155/0156 can be mounted on the TAF 5-speed close ratio transmission kit (for stock clutch).
02-02-0156 Special clutch inner kit TYPE-R (Slipper clutch) (For stock main shaft)	※ 3	

※ 1. The main shaft of the close ratio transmission kit has a TYPE-R designated special clutch inner kit

※ 2. The main shaft of the close ratio transmission kit has a designated for the stock clutch.

※ 3. Both uses stock main shaft.

~ feature ~

- Wet clutch cover exclusively for our special clutch TYPE-R.
- The hydraulic clutch system improves response and clutch operation.
- R. Crank case cover is made of black painted aluminum die cast, clutch cover is made of billet aluminum and anodized.
- By adopting a paper cartridge oil element, the centrifugal oil filter can be removed and reducing the load on the crankshaft and improving engine response.
- Thermostat unit (02-01-5052: optional) can be installed. Thermostat prevents overcooling with oil cooler.
- The oil level window makes it easy to check the oil level.
- Filtered oil flows through the oil element by two passage (crankshaft / transmission) with this kit.
(In the stock clutch cover, only one crankshaft passage passes through the centrifugal filter from oil pump).
- ※ By connecting our bore-up cylinder (oil outlet equipped model) and oil line hose kit (00-07-0095: optional), the oil through the oil element can flow to the cylinder head.

⚠ Caution When the handling of ignoring this display, property damage and human shows the assumption of what injury.

- On the street, keep the legal speed and obey the traffic law.
(If you drive faster than the legal speed, you will be punished for violating the Road Traffic Act and speeding.)
- When performing the work, etc., be sure during the cold (when the engine and the muffler is cold). (It may cause burns.)
- When performing the work, it should be made to prepare the tools for the job. (Breakage of parts, it may cause injury.)
- Do the work must always specified torque using a torque wrench. (Damage of bolts and nuts, and cause of dropout.)
- The product and the frame, might have edges or protrusions. Please go to protect your hands when you work. (It may cause injury.)
- Be sure to each part inspection before operation, check the loosening of the threaded portion, be sure to securely tighten the specified torque if there is loose. (It may cause detachment of the parts.)
- Be careful that the brake fluid does not contact your skin. After work, wash your hands thoroughly with water.
(Otherwise, you will have a rough skin.)
Be careful as it may damage if it adheres to clothes.
- Please handle the brake fluid with great care, because the brake fluid, if spilled on painted surfaces, resin parts, or rubber products, will deteriorate or damage these parts. If the fluid is spilled on these parts, wash them immediately with water.
(Otherwise, the spilled portions will deteriorate or get damaged.)

SPECIAL PARTS
TAKEGAWA

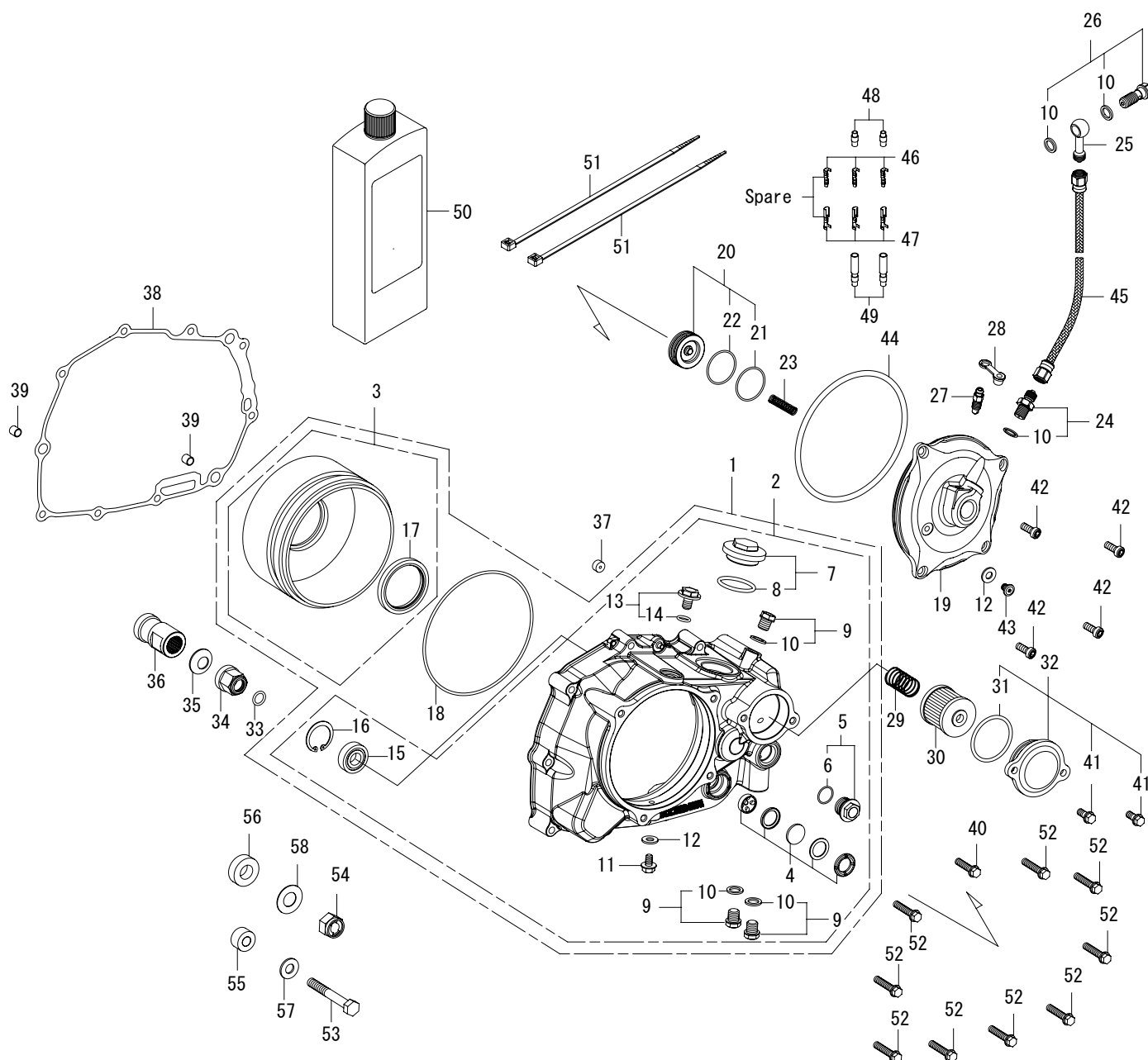
CONTACT Address : 3-5-16 Nishikiorihigashi Tondabayashi Osaka JAPAN
TEL: +81-721-25-1357 FAX: +81-721-24-5059 e-mail: english@takegawa.co.jp URL: http://www.takegawa.co.jp
Please contact with your name and country name provided. (Only English please)

Warning When the handling of ignoring this display people died, shows the contents of the serious injury possibility is assumed.

- The technology and those who no knowledge, please do not to work. (The cause of parts damage etc., could result in falls and accidents.)
- If you start the engine, be sure in a well-ventilated place. In the sealed such place, please do not start the engine. (There is a risk of carbon monoxide poisoning.)
- During operation, when an abnormality occurs, immediately stop the vehicle in a safe place, please stop running. (It may lead to an accident.)
- When performing the work, do the work safely stabilize the vehicle in a horizontal location. (There is a risk of injury vehicle collapsed while working.)
- Inspection, maintenance, the instruction manual or, inspection methods such as service manuals, to protect the way, should be done correctly. (unsuitable inspection and maintenance, there is a risk that result to an accident.)
- When carrying out the inspection and maintenance, etc., if found damaged parts, replace the damaged parts to avoid possible to reuse the parts. (There is a risk that lead to accidents Continued use.)
- The engine and exhaust system are hot while the engine is running or for a while even the engine is stopped. Never place dangerous or flammable materials such as gasoline near working area. (May caused fire.)
- Please use only the specified brake fluid. Don not use the different brands of brake fluids together. (Otherwise, the mixed use of the brake fluids will cause technical troubles or chemical reaction.)

- ◎ Please note. Performance up, the design change, the product and the price in the cost up, etc. are subject to change without notice.
- ◎ Please be informed that we shall be held harmless against any claim against us whatsoever arising out of use of the products in racing and the like.
- ◎ Keep this manual stored until this product is discarded.

Product content



Product content

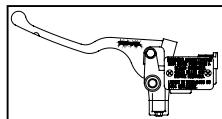
Number	Product content	Quantity	Item Number
1	R. crankcase cover set	1	00-02-6211 (Black) 00-02-0467 (Silver)
2	R. crankcase cover ASSY.	1	00-02-6208 (Black) 00-02-0466 (Silver)
3	Separator COMP.	1	02-02-0125 (with O-ring)
4	Oil pot window set	1	00-02-0031
5	Thermostat hole cap	1	00-07-0063 (with O-ring)
6	O-ring, 15mm	1	00-00-0185 (5 pcs)
7	Hole cap	1	09-06-0131 (with O-ring)
8	O-ring, 30mm	1	00-01-0034 (4 pcs)
9	Oil plug bolt	3	00-07-0072 (with Sealing washer)
10	Sealing washer, 10mm	6	00-07-0106 (10 pcs)
11	Flange bolt, 6x12	1	00-00-0322 (6 pcs)
12	Sealing washer, 6mm	2	00-00-2780
13	Oil filler cap	1	00-02-0468 (with O-ring)
14	O-ring, 13mm	1	00-00-0644 (5 pcs)
15	Bolt bearing, 6001Z	1	00-01-1011
16	C type ring, 28mm	1	00-00-0643 (3 pcs)
17	Oil seal, 54x70x9	1	00-02-0364
18	O-ring, 120mm	1	00-00-0656
19	Clutch cover	1	00-00-1087
20	Release piston	1	00-02-0471 (with O-ring)
21	O-ring, 30mm (SBR)	1	00-00-0673
22	O-ring, 30mm (NBR)	1	00-00-0674 (4 pcs)
23	Release spring	1	00-00-1095
24	Adaptor, 10mm	1	00-07-0032 (2 pcs) (with Sealing washer)
25	Banjo (Straight)	1	00-07-0006
26	Banjo bolt, M10x1.25 (Gold)	1	00-07-0131 (with Sealing washer)
27	Bleeder screw	1	00-02-6213
28	Bleeder cap	1	00-02-6212

Number	Product content	Quantity	Item Number
29	Oil filter spring	1	00-07-0065
30	Oil filter element	1	00-02-0027
31	O-ring, 40mm	1	00-02-0040
32	Oil filter cover	1	00-02-0470 (with O-ring/Bolt)
33	O-ring, 12mm	1	00-00-0136
34	Oil through nut	1	00-00-2310
35	Conical spring washer, 14mm	1	00-02-0036
36	Spacer	1	00-00-1414
37	Orifice	1	00-00-1072
38	R. crankcase cover gasket	1	00-02-0356
39	Dowel pin, 8x12	2	00-00-0153 (2 pcs)
40	Flange bolt, 6x35	1	00-00-0885 (5 pcs)
41	Flange bolt, 6x16	2	00-00-0879 (5 pcs)
42	Hexagon socket head cap screw (low head), 6x16	4	00-00-0377 (4 pcs)
43	Hexagon socket head cap screw (extremely low head), 6x8	1	00-00-0697 (4 pcs)
44	O-ring, 120mm	1	00-02-0188
45	Brake hose (960mm)	1	00-06-0164
46	φ 4 male connector	3	00-00-0570 (each 5 pcs)
47	φ 4 female connector	3	
48	Male connector cover	2	
49	Female connector cover	2	
50	Brake fluid, DOT4 (200cc)	1	06-08-0019
51	Zip-tie, 200mm	2	00-00-0179 (10 pcs)
52	Flange bolt, 6x40	9	00-00-0886 (5 pcs)
53	Hexagon bolt, 8x45	1	00-00-0914
54	U nut, M12x1.25	1	00-00-0915
55	Collar 1	1	00-00-2594
56	Collar 2	1	00-00-2595
57	Plain washer, 8mm	1	00-00-0076 (10 pcs)
58	Shim ring, 12x18x0.5	1	00-00-0370

※ Please order in the repair parts are always repair part number. If it is not the part number order, you may not be able to order.
Please be forewarned.

It should be noted, In the case of parts that can not be separately shipment, please order a set part number.

Optional Parts

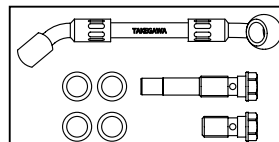


Billet (foldable) L. lever
:02-01-0062

Clutch master cylinder ASSY.
:02-02-2103

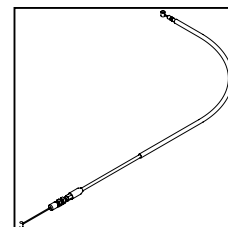
Piston diameter: 1/2 inch (12.7mm)
Mirror mounting diameter: M10
L. master cylinder with well finger
touching design clutch lever.

L. lever (exclusive) for the clutch master cylinder ASSY.
Equipped with an adjustable lever that can adjust the
lever position in 6 steps with the foldable type that
prevent break.
The length and shape of this special designed lever will
be set close to the genuine brake lever (of GROM / MSX125)
L and R lever will be light weight, well balanced and
improved operation performance of this clutch cover kit
even more.

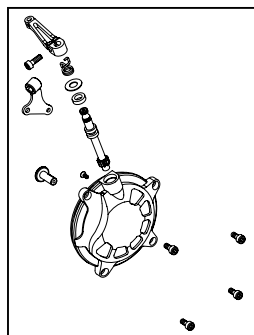


Oil line hose kit
:00-07-0095

By using with Takegawa oil outlet equipped
(bore up) cylinder and this clutch cover kit,
you can send clean oil through the oil filter
element to the cylinder head.

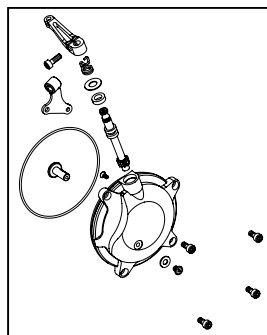


Clutch cable COMP.
850mm:00-02-0133



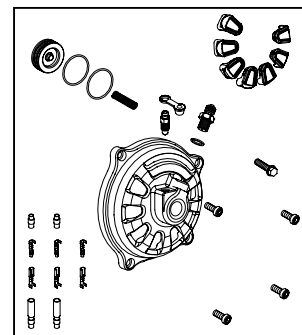
Clutch cover set (DRY/Wire type)
:02-02-0126

Dry and cable type cover set.
Used when replace from hydraulic type to cable type.
Light and smooth operation is possible by adopting
the rack and pinion system.



Clutch cover set (WET/Wire type)
:02-01-0156

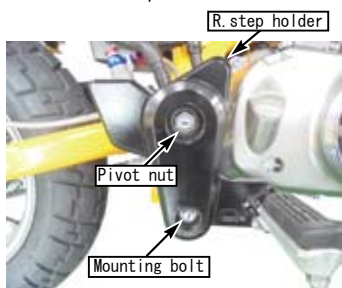
Wet and cable type cover set.
Used when replace from hydraulic type to cable type.
This is the cover for fill the oil into the clutch
chamber and using it as a wet clutch.



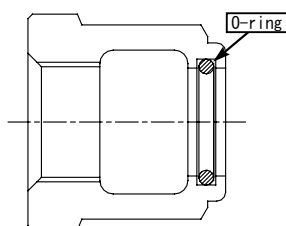
Clutch cover set (DRY/Hydraulic type)
:02-02-0163

Dry and Hydraulic type cover set.
Used when changing to the dry type clutch.
The rubber cap (included) protects water into the
clutch cover and softens the dry clutch noise.

- Park the motorcycle in a horizontal place with a maintenance stand, etc.
- Drain engine oil.
- Remove the R. step holder.

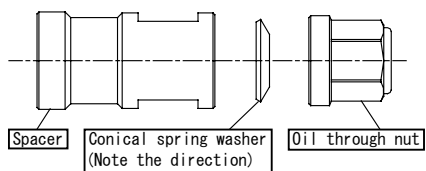


- When installing the close ratio transmission kit at the same time, refer to the close ratio transmission installation manual.
- Attach the O-ring(12mm) to the oil through nut and apply a engine oil to the O-ring (12mm).



- Attach the spacer, conical spring washer (14mm), and oil through nut to the crankshaft in this order, hold the spacer with a spanner, and tighten the oil through nut to the specified torque.

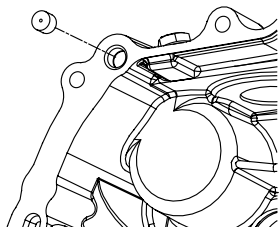
⚠ Note: Be sure that you protect specified torque.
Oil through nut
Torque : 64N · m (6.6kgf · m)



- Attach the primary driven gear assembly by referring to the installation manual for the special clutch inner kit TYPE-R.

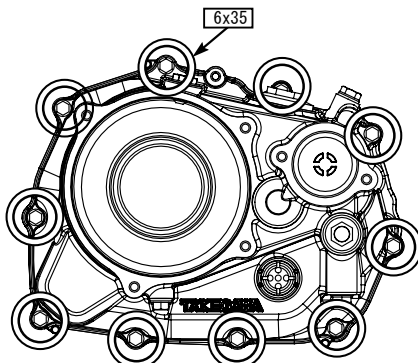
Installing the clutch cover

- Clean the gasket surface of the R. crankcase, attach the dowel pin, and install a new R. crankcase cover gasket.
- Attach the orifice in the kit to the back of the R. crankcase cover.

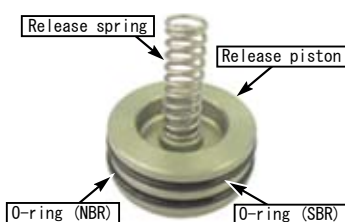


- Attach the R. crankcase cover with kit flange bolts (6x35) and flange bolts (6x40), and tighten the bolts diagonally several times to the specified torque.
(Use the kit flange bolts (6x35) at the locations shown by the arrows in the figure below)

⚠ Note: Be sure that you protect specified torque.
Flange bolt 6x35, 6x40
Torque : 9.8N · m (1.0kgf · m)



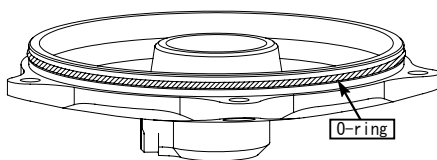
- Attach the clutch by referring to the installation manual for the special clutch inner kit TYPE-R.
- Assemble the O-ring 30mm (SBR / NBR) to the release piston then attach the release spring.
- ※ Apply a thin layer of rubber grease to the O-ring then assemble.
- ※ Each O-ring has a specified mounting position. As shown in the photo, install the O-ring (SBR) on the spring side and the O-ring (NBR) on the clutch side.



- Attach the assembled release piston to the clutch cover.
- ※ Apply a thin coat of rubber grease to the cylinder side of the clutch cover and assemble it.
- ※ Caution: forcibly assemble the release piston into the cylinder, the O-ring will be damaged.

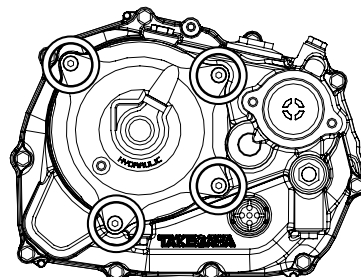


- Attach the O-ring(120mm) to the clutch cover and apply a engine oil to the O-ring(120mm).



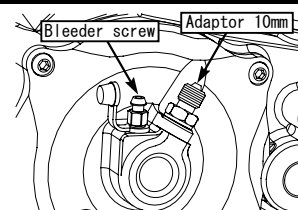
- Attach the clutch cover to the R. crankcase cover, install it with the hexagon socket head cap screw(low head) 6x16 and tighten it to the specified torque.

⚠ Note: Be sure that you protect specified torque.
Hexagon socket head cap screw(low head) 6x16
Torque : 9.8N · m (1.0kgf · m)



- Attach the bleeder screw (with rubber cap) temporarily, then attach the adaptor with aluminum sealing washer(10mm) to the clutch cover with the specified torque.

⚠ Note: Be sure that you protect specified torque.
Adaptor 10mm
Torque : 12.7N · m (1.3kgf · m)



- Remove the connector and switch cover from the clutch lever, and remove the lever from the handle bar.

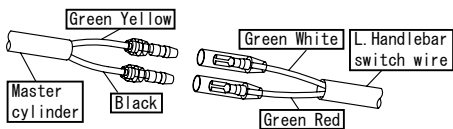


- Attach the clutch master cylinder (optional parts) to the handle bar(referring to the instruction manual).
- Attach the brake hose (960 mm) with hold the adaptor(by wrench as shown), and tighten the hose fitting to the specified torque. Route the brake hose(960 mm) to the clutch master cylinder, sealing washer(10 mm), banjo (straight), sealing washer(10mm) in order, install with banjo bolt(M10x1.25, gold), and hose. Tightening with the specified torque.

⚠ Note: Be sure that you protect specified torque.
Banjo bolt
Torque : 14.7N · m (1.5kgf · m)
Hose fitting
Torque : 5.9N · m (0.6kgf · m)



- Cut the wiring of the connector (removed from the stock clutch lever) and the wiring of the clutch master cylinder ASSY. with electrical connector.



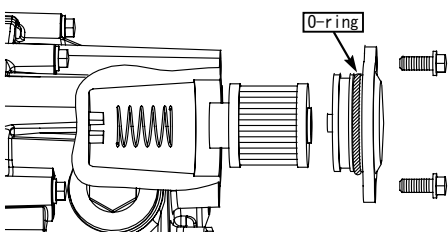
Installing the oil filter cover

- Place the oil filter spring in the R. crankcase cover (fit it into the guide of the case), put the oil filter element, attach the O-ring (40mm) to the oil filter cover, apply engine oil, and attach the flange bolt (6x16). Tighten with specified torque.

⚠ Note: Be sure that you protect specified torque.
Flange bolt 6x16
Torque : 9.8N · m (1.0kgf · m)

- ※ Make sure the oil filter element attached the guide on the oil filter cover.
- ※ Caution: If the oil filter spring does not fit inside of the guide (of the oil filter element), there will be a gap between the oil filter cover and the R. crankcase cover. This may cause the oil leaks.
- ※ Install the O-ring as shown below.

⚠ Note: Caution: O-ring is installed incorrectly, the engine may be damaged.



Fill the brake fluid

- Remove the reservoir cap and check that the bleeder screw and banjo bolt are well tightened. Check and fill the brake fluid to the upper limit line of the reservoir and operate the clutch lever to fill the brake fluid in the clutch system. Repeat this until no air bubbles come out from the primary port in the reservoir (until the clutch lever feels some weight).
- ※ To prevent chemical reaction, do not mix different brands of fluid.
- ※ Caution: brake fluid will damage the painted surface, so do not let it adhere to the parts.
If attached, wash with water.

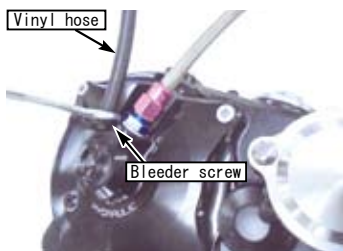


- Attach a vinyl hose to the bleeder screw and receive it with an appropriate cup on the other side of the tube. Grip the bleeder screw about 1/2 turn until the tip of the clutch lever hits the grip, tighten it again, slowly release the clutch lever, and leave it for a few seconds as it is completely returned.

※ Do not release the lever with the bleeder screw loosened.

- Repeat this until no bubbles come out from the bleeder.

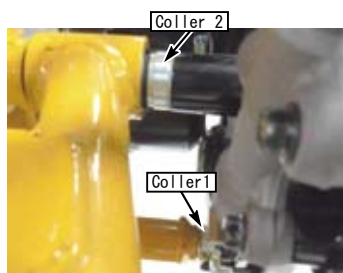
※ Caution: attention to the brake fluid level in the master cylinder, fill it before lower limit line.



- Tighten the bleeder screw to the specified torque.

⚠ Note: Be sure that you protect specified torque.
Bleeder screw
Torque : 7.8N · m (0.8kgf · m)

- When air bleeding is completed, fill the brake fluid to the upper limit line of the reservoir and attach the diaphragm and cap.
- Secure the brake hose with a zip-tie (200mm) to avoid interfere with other parts.
- Set color 1 and color 2 on the back side of the R. step holder.



- Attach R. step holder with shim ring (12x18x0.5), U nut (M12x1.25), washer (8mm) and hex bolt (8x45).

⚠ Note: Be sure that you protect specified torque.
U nut M12x1.25
Torque : 54N · m (5.5kgf · m)
Hexagon bolt 8x45
Torque : 31N · m (3.1kgf · m)

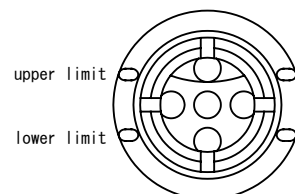


After assembly

- After confirming that the drain bolt {T=24N · m (2.4kgf · m)} is tightened, pour engine oil, attach the O-ring to the hole cap, apply a small amount of engine oil to the O-ring. Tighten to the specified torque.

⚠ Note: Be sure that you protect specified torque.
Hole cap
Torque : 11.8N · m (1.2kgf · m)

- ※ Check the amount of oil in the oil level check window frequently, and if it is below the lower limit, add the oil.

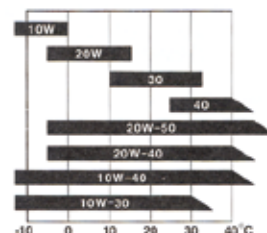


∴ Recommended oil
SAE 10W-40 20W-50
API classification

: SG, SH, SJ, SL equivalent
JASO standard : MA

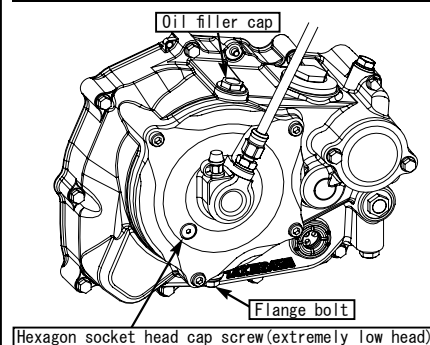
∴ Oil capacity
When changing oil : 750cc
When overhauled : 950cc

- For the engine oil viscosity, refer to the figure and use the oil with the viscosity suitable for the environment and the outside temperature.



- Remove engine oil filler cap and hexagon socket head cap screw (extremely low head), fill the engine oil until the oil comes out from the hexagon socket head cap screw hole.
Tighten Oil filler cap and hexagon socket head cap screw (6x8 with sealing washer) to the specified torque.

⚠ Note: Be sure that you protect specified torque.
Oil filler cap
Torque : 11.8N · m (1.2gf · m)
Hexagon socket head cap screw (extremely low head) 6x8
Torque : 6.3N · m (0.64kgf · m)



- ※ Check the amount and change the oil frequently. Remove the flange bolt {T=11.8N・m(1.2kgf)} and drain the oil.
- ※ Amount of oil in clutch chamber :approx. 105cc

- ※ The viscosity and amount of engine oil affects the of clutch disengagement.
Caution: not to use high viscosity or over amount.

- ※ As described above, this clutch cover is design to be used as a wet type clutch but it can also be used as a dry type clutch without oil. Caution when use as Dry type clutch

- When using it as a dry type clutch, "Remove the flange bolts(not use)" because condensation may form inside the clutch chamber.
- After using as the wet type clutch and like change to use as a dry type clutch, use the new friction disc and degrease all other parts. the remains oil may cause seizing.

- Shift the transmission to first gear with the engine stopped and squeeze the clutch lever.

When moving the vehicle, make sure that the rear wheel does not rotate when the rear wheel rotates and the clutch lever is released.

- Start the engine with the transmission in neutral and check all parts for oil leaks.

⚠ Warning : Be sure to start the engine in a well-ventilated place.

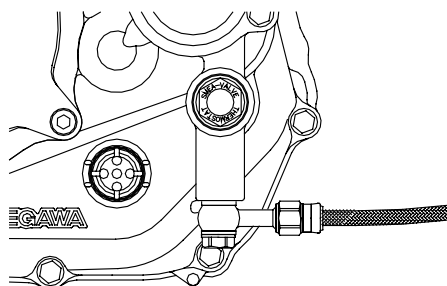
- If there is no problems, test ride at low-speed in a safe place to check the operation of the clutch.

Caution

Precautions when installing an oil cooler

● When installing an optional thermostat unit

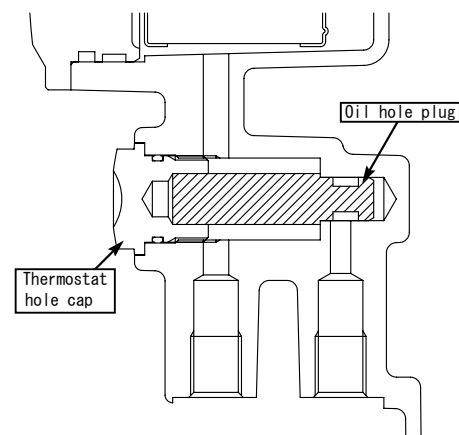
- Installing the thermostat unit.
- Remove the two oil plug bolts, attach an adapter that matches the type of hose to be used, and connect the hose.
- ※ Check the thermostat unit instruction manual.
- ※ Check the oil cooler kit instruction manual and adapter instruction manual.



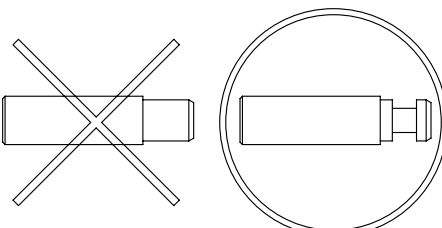
● When not installing the thermostat unit

- Remove the thermostat hole cap and insert the oil hole plug (00-02-0391) into the oil hole.
- Apply engine oil to the O-ring of the thermostat hole and tighten the hole cap to the specified torque.

⚠ Note: Be sure that you protect specified torque.
Hole cap
Torque : 12.7N・m (1.3kgf・m)



- Do not use oil hole plugs (00-02-0111).



⚠ Note: If use the oil hole plug (00-02-0111), the oil passage will be closed and the engine may be damaged.

● When installing an oil hose to the oil outlet of the cylinder

- ⚠ Note: Never attach the thermostat unit or oil hole plug when the oil hose is not connected to the clutch cover. Oil passage will closed and engine may be damaged.

When not installing an oil cooler

- Never install a thermostat unit or oil hole plug.
Remove a thermostat unit or oil hole plug.

⚠ Note: When the thermostat unit or oil hole plug is installed, the oil passage is closed and the engine may be damaged.

Caution: installing the oil line hose kit (00-07-0095)

- Bend the clamp to avoid lower sensor wire clamp interferes with the oil line.

