

Special Clutch Kit Instruction Manual

(Aluminum Die Cast Clutch Cover / Special Clutch 5 Disc)

Item No.	02-01-0245 (Buffing・Clear paint)
	02-01-0483 (Silver paint)

Fits	6V Monkey・Gorilla (Z50J-1300017 ~ 1805927)
	12V Monkey・Gorilla (Z50J-2000001 ~) (AB27-1000001 ~ 1899999)
	Monkey (F1) (AB27-1900001 ~)
Requirement	Genuine main shaft/Only for Manual Clutch

Thank you for purchasing one of our products. Please strictly follow the following instructions in installing and using the Kit.
Before installing the Kit, please be sure to check the Kit contents. Should you have any questions about the Kit, please contact your local motorcycle dealer.

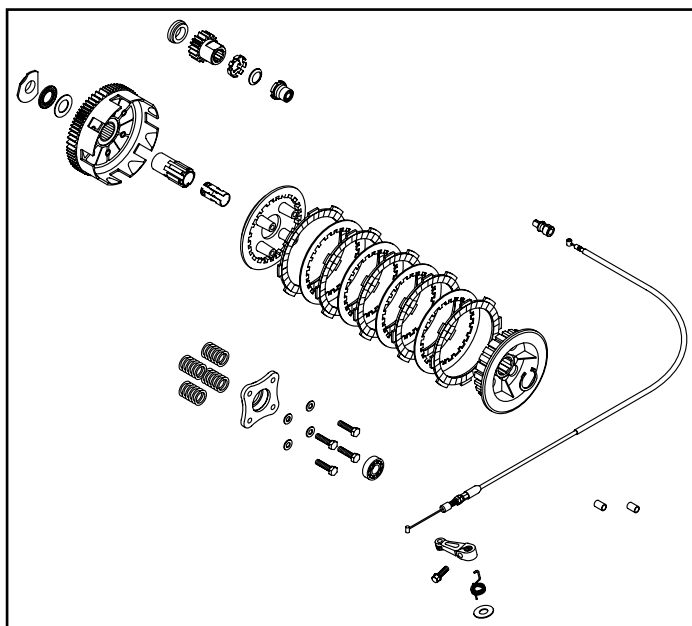
◎ Please note that the descriptions in this manual like illustrations and photos may differ from the actual hardware.

☆ Read all instructions first before starting the installation ☆

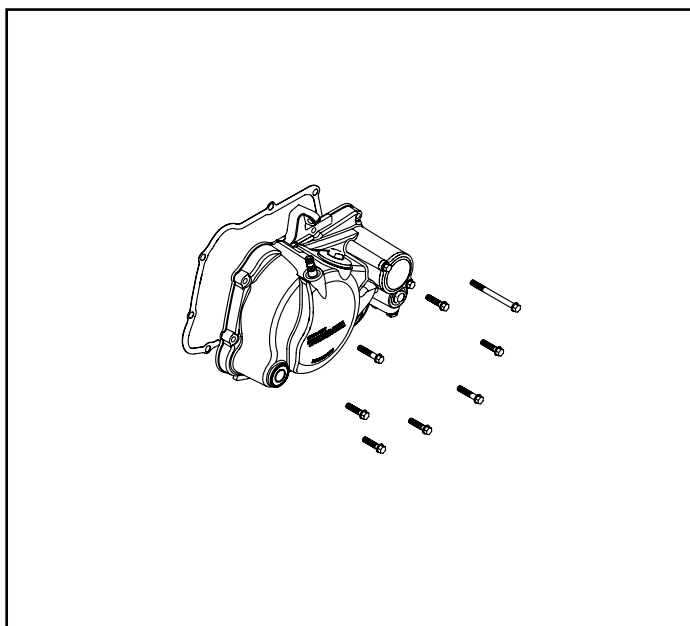
- ◎ We do not take any responsibility for any accident or damage whatsoever arising from the use of the product not in conformity with the instructions in this Instruction Manual.
- ◎ You are requested not to contact us about the combination of our product with other manufacturers'.
- ◎ Please note that this Kit is designed for exclusive use in the above-mentioned compatible models and frame numbers only and that it cannot be mounted on any other models.
- ◎ Product may have edges or protrusions. Be sure to wear working gloves.
(Please wear work gloves when working, even if a photo in this article show without work gloves.)
- ◎ Those who are technically unskilled or inexperienced are required not to do the work. (Improper installation because of insufficient skill or knowledge could lead to parts breakage.)
- ◎ Please note. Performance up, the design change, the product and the price in the cost up, etc. are subject to change without notice.
- ◎ Please be informed that we shall be held harmless against any claim against us whatsoever arising out of use of the products in racing and the like.
- ◎ Keep this manual stored until this product is discarded.
- ◎ This is a kit combining an aluminum die-cast special clutch cover kit and a special clutch kit (5 disk) for a stock main shaft.
For the installation, please refer to the instruction manual for each kit.
- ◎ This product is designed exclusively for use with standard transmissions. It is not compatible with vehicles equipped with close-ratio (cross) transmissions.
- ◎ Genuine exhaust system and our up type exhaust system cannot be installed. When installing our Z style exhaust system, the cable receiver section of the clutch cover will interfere with the exhaust heat protector. It can be attached by processing the interference part of the exhaust heat protector.
- ◎ When installing on a vehicle with frame number: 1300017 to 1510400, our clutch lever and combination switch, steering handle pipe are necessary separately.
(The contents of this kit is the kit contents for manual clutch vehicles.
For centrifugal 3-speed vehicles of frame number from 1300017 to 1510400, cannot be corresponded to by only parts included in this kit.)
For details, please visit our general catalog or WEB SITE.

Kit includes

02-01-5077



02-01-0244/02-01-0476



Item No.	Part Name	Qty
02-01-0244	Special Clutch Cover Kit (Buffing・Clear paint)	1
02-01-0476	Special Clutch Cover Kit (Silver paint)	1
02-01-5077	Special Clutch Kit (5 disk) (For stock main shaft)	1

SPECIAL PARTS
TAKEGAWA

CONTACT Address : 3-5-16 Nishikiorihigashi Tondabayashi Osaka JAPAN
TEL: +81-721-25-1357 FAX: +81-721-24-5059 e-mail: english@takegawa.co.jp URL: http://www.takegawa.co.jp
Please contact with your name and country name provided. (Only English please)