

Special Clutch Cover Kit Instruction Manual

| | |
|----------------|---|
| Product number | 02-01-0248 (Buffing・Clear paint) 02-01-0492 (Silver paint) |
|----------------|---|

| | |
|-------------|---|
| Requirement | Motorcycles with 12V CD90 engine (HA03-1000003 ~ 1024852) (HA03-1100005 ~) |
|-------------|---|

Thank you very much for purchasing our products.

Thank you so you will comply with the following matters at the time of use. Before installation, please check your always kit contents. If there is a point of notice event, Please contact us the dealer of purchase.

◎ If the description, such as photos or Illustration different with this part.

☆ Please read carefully before use ☆

- ◎ The use ignoring the instructions that are written in the manual, if the accident or damage has occurred, we can not assume any responsibility for compensation.
- ◎ This product installation and use, when a problem occurs to after market goods, guarantee other than this product, also can not assume any in any such matters.
- ◎ If it was the case or mounting that has been processed like a product, it will not be covered under warranty.
- ◎ It is not possible to inquire of the combination of other manufacturers.
- ◎ This product is the above-mentioned vehicle exclusive goods. Is not possible attached to the other vehicle. Please note.
- ◎ Product may have edges or protrusions. Be sure to wear working gloves.
(Please wear work gloves when working, even if a photo in this article show without work gloves.)
- ◎ It can be used with vehicles equipped with the CD90 engine, such as the Monkey or Gorilla.

⚠ Caution When the handling of ignoring this display, property damage and human shows the assumption of what injury.

- When performing the work, etc., be sure during the cold (when the engine and the muffler is cold).
(It may cause burns.)
- When performing the work, it should be made to prepare the tools for the job.
(Breakage of parts, it may cause injury.)
- Do the work must always specified torque using a torque wrench.
(Damage of bolts and nuts, and cause of dropout.)
- The product and the frame, might have edges or protrusions. When working, please wear work gloves to protect your hands.
(It may cause injury.)
- Be sure to each part inspection before operation, check the loosening of the threaded portion, be sure to securely tighten the specified torque if there is loose. (It may cause detachment of the parts.)

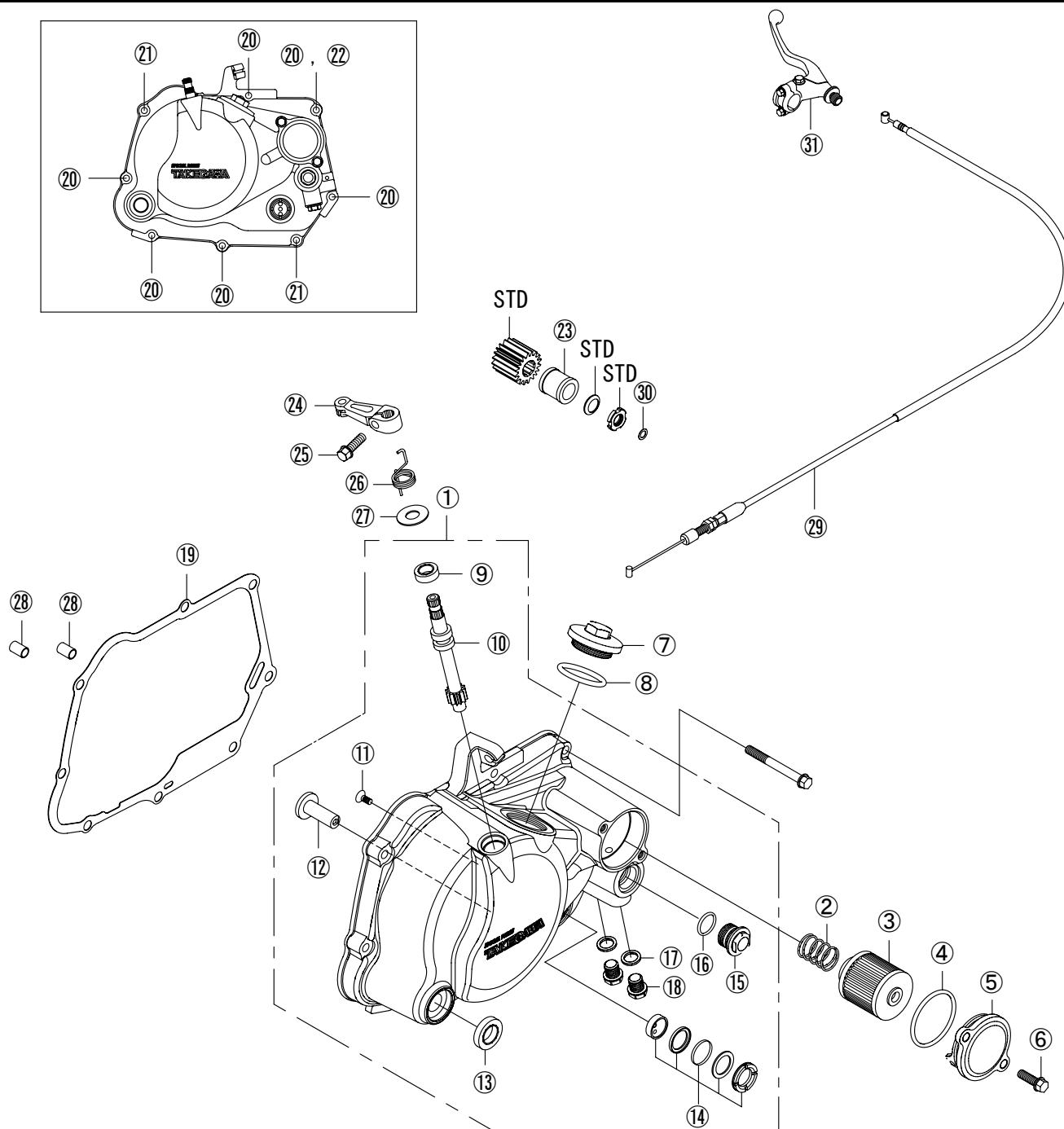
⚠ Warning When the handling of ignoring this display people died, shows the contents of the serious injury possibility is assumed.

- If you start the engine, be sure in a well-ventilated place. In the sealed such place, please do not start the engine.
(There is a risk of carbon monoxide poisoning.)
- During operation, when an abnormality occurs, immediately stop the vehicle in a safe place, please stop running.
(It may lead to an accident.)
- When performing the work, do the work safely stabilize the vehicle in a horizontal location.
(There is a risk of injury vehicle collapsed while working.)
- Inspection, maintenance, the instruction manual or, inspection methods such as service manuals, to protect the way, should be done correctly. (unsuitable inspection and maintenance, there is a risk that result to an accident.)
- When carrying out the inspection and maintenance, etc., if found damaged parts, replace the damaged parts to avoid possible to reuse the parts. (There is a risk that lead to accidents Continued use.)
- As gasoline is highly flammable, never place it close to fire. Make sure that nothing flammable is near the gasoline. Since vaporized accumulation of gasoline is at high risk of explosion, work in a well-ventilated place.

- ◎ Please note. Performance up, the design change, the product and the price in the cost up, etc. are subject to change without notice.
- ◎ Please be informed that we shall be held harmless against any claim against us whatsoever arising out of use of the products in racing and the like.
- ◎ Keep this manual stored until this product is discarded.

SPECIAL PARTS
TAKEGAWA

CONTACT Address : 3-5-16 Nishikiorihigashi Tondabayashi Osaka JAPAN
TEL: +81-721-25-1357 FAX: +81-721-24-5059 e-mail: english@takegawa.co.jp URL <http://www.takegawa.co.jp>
Please contact with your name and country name provided. (Only English please)



| Number | Product content | Quantity | Item Number |
|--------|-----------------------|----------|---------------------------|
| 1 | Crankcase cover ASSY. | 1 | |
| 2 | Oil-filter spring | 1 | 00-07-0065 |
| 3 | Oil-filter element | 1 | 00-02-0027 |
| 4 | O -ring, 40mm | 1 | 00-02-0040 |
| 5 | Oil-filter cover | 1 | 00-00-1411 |
| 6 | Flang bolt, 6x16 | 2 | 00-00-0879 (5 pcs) |
| 7 | Hole cap | 1 | 09-06-0131 (with O -ring) |
| 8 | O -ring, 30mm | 1 | 00-01-0034 |
| 9 | Oil seal, 10x17x5 | 1 | 00-02-0006 |
| 10 | Clutch release pinion | 1 | 00-02-0033 |
| 11 | Flat head screw, 4x10 | 1 | 00-00-0100 |
| 12 | Clutch release rack | 1 | 00-02-0032 |
| 13 | Oil seal, 13.8x24x5 | 1 | 00-02-0032 |
| 14 | Oil-pot window set | 1 | 00-02-0031 |
| 15 | Thermostat hole cap | 1 | 00-07-0063 (with O -ring) |
| 16 | O -ring, 15mm | 1 | 00-00-0185 (5 pcs) |

| Number | Product content | Quantity | Item Number |
|--------|---|----------|----------------------------------|
| 17 | Sealing washer, 10mm | 2 | 00-07-0106 (10 pcs) |
| 18 | Oil-plug bolt | 2 | 00-07-0072 (with Sealing washer) |
| 19 | Right crankcase cover gasket | 1 | 00-01-0095 |
| 20 | Flange Bolt, 6x25 | 6 | 00-00-0882 (5 pcs) |
| 21 | Flange Bolt, 6x32 | 2 | 00-00-0884 (5 pcs) |
| 22 | Flange Bolt, 6x70 (for C.D.I. Motorcycle only) | 1 | 00-00-0892 (3 pcs) |
| 23 | Spacer | 1 | 00-00-1413 |
| 24 | Clutch release arm | 1 | 00-02-0106 |
| 25 | Flange bolt, 6x18 | 1 | 00-00-0880 (5 pcs) |
| 26 | Clutch release arm spring | 1 | 00-02-0112 |
| 27 | Plain washer, 10mm | 1 | 00-00-0151 (10 pcs) |
| 28 | Dowel pin, 8x12 | 2 | 00-00-0153 (2 pcs) |
| 29 | Clutch cable COMP. | 1 | 00-02-0107 |
| 30 | shim ring, 6mm | 1 | 00-00-0579 |
| 31 | Clutch lever ASSY. | 1 | 02-01-0282 |

※ Please order in the repair parts are always repair part number.

If it is not the part number order, you may not be able to order. Please be forewarned.

It should be noted, In the case of parts that can not be separately shipment, please order a set part number.

※ Repair parts may differ slightly from the kit contents in terms of shape, etc. There is no problem to use it. Please be forewarned.

~ Features ~

- The clutch cover and oil-filter cover are made of die-cast aluminum.
- The surface is buff-polished and available in your choice of two finishes: clear coating or silver coating.
- An optional thermostat, using a memory-metal spring, can be installed. (PATPEND)
- We have used a clutch cable receiver integrated with a clutch cover.
- This kit enables the flow of oil from the clutch cover to oil cooler.
- This kit comes with a usual glass-type oil pot window with a high level of durability.

Safety Precautions for Use

- An oil cooler unit, which is installable to the oil filter cover, cannot be installed due to the size difference.
An oil line can be used only at the specified location.
- A conventional oil cooler hose cannot be used due to size differences. Please use the one for a die-cast cover.
- An oil filter cover and a clutch release rack are for exclusive use with a die-cast cover. They are not compatible with the conventional ones.
- If you are using an oil cooler kit to which an oil hose is connected from the cover on the side of the cylinder head, NEVER install a thermo unit or an oil hole plug. There is a possibility that the engine will be damaged due to the oil passage blockage.
- A blind plug for a kick starter spindle differs from the conventional one in size. Please use the blind plug for a die-cast cover.
For a thermo unit, oil cooler, etc., please refer to a relative instruction manual.

■ Mounting procedure ※ Please refer to the Genuine Service Manual for detailed mounting methods and specified torques that are not specifically described.

This Installation Procedures relate to the work at a stage after the engine has already been demounted from the frame. For the work before this stage, please refer to an owner's or service manual, instruction manual for each product, or engine-tuning master book.

Disassembly

(Please do the following work referring to a service manual.)

- Pull out a right crankcase-cover bolt to remove a right crankcase cover. Detach a case-cover gasket and two dowel pins.
- Unscrew four flat screws on the oil-filter rotor cover to remove an oil-filter cover, gasket and oil seal.



- Loose a locking nut to pull out a washer and oil-filter rotor.

Installation

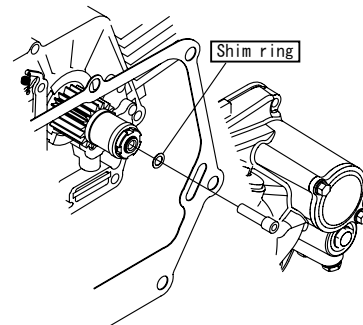
- First, check that the primary-drive gear is already in place, attach a spacer and a washer in this order, and finally tighten the locking nut to the specified torque.

⚠ Note: Be sure that you protect specified torque.
Locking nut
Torque : 39N · m (4.0kgf · m)



Installation of Right Crankcase Cover

- Degrease the mating surfaces of the right crankcase cover and crankcase, and attach 2 dowel pins and a gasket.
- ※ Wipe out thoroughly the gasket material on the mating surfaces, if any.
- ※ Detach an oil filter screen to clean it.
- Engine oil is applied to the shim ring, into the oil pipe on right side crankcase cover, with care so as not to damage oil seal of kick starter spindle unit, install right side crankcase cover.



- Tighten eight flange bolts diagonally in a few steps to the specified torque.
- ※ The bolt length differs between a point-type and a C.D.I.-type motorcycles.

⚠ Note: Be sure that you protect specified torque.
Flange bolt
Torque : 10N · m (1.0kgf · m)

- Place the oil-filter spring on the protrusion of the right crankcase-cover oil filter. Insert the oil filter into the protrusion on the oil-filter cover.
- Apply engine oil to the O-ring on the oil-filter cover, and install the oil-filter cover onto the right crankcase cover, being careful not to jam the O-ring.
- And fix and tighten the flange bolt to the specified torque.

⚠ Note: Be sure that you protect specified torque.
Flange bolt
Torque : 9N · m (0.9kgf · m)

- Tighten the drain bolt to the specified torque, and add 800 cc of engine oil.

⚠ Note: Be sure that you protect specified torque.
Drain bolt
Torque : 21.5N · m (2.2kgf · m)

- Apply engine oil to the O-ring of the hole cap, and tighten the cap to the specified torque.

⚠ Note: Be sure that you protect specified torque.
Hole cap
Torque : 12N · m (1.2kgf · m)

- ※ In case the crankcase was disassembled, add 850cc of engine oil.
- ※ Viscosities and amount of engine oil will have an effect on the shifting of clutch engagement. Take care not to use too viscous engine oil or inject too much of engine oil. Additionally, don't mix too much of molybdenum, etc. which may cause clutch slippage.

Clutch Cable Installation

- Attach the clutch cable to the clutch lever, and route the cable to the clutch cable receiver, being careful not to stretch it too tight.
- Attach the adjuster of the clutch cable to the cable receiver, and attach the cable end to the arm so the notch on the split clamp of clutch release arm faces backward.
- Rotate the clutch release pinion clockwise till it comes to a halt and place the plain washer into the release pinion.
- Place the release arm spring in the clutch release arm, and insert it into the release pinion with the inner cable stretched, and hang the arm spring on the right crankcase cover.
- Attach the flange bolt to the release arm, and tighten the bolt to the specified torque with the arm pressed in.

⚠ Note: Be sure that you protect specified torque.
Flange bolt
Torque : 10N · m (1.0kgf · m)

- Adjust the free play at the clutch with the adjuster on the clutch cable receiver, then install and tighten the locking nuts to the specified torque.
And cover the clutch cable adjusters at both ends with rubber caps. Adjust the free play at the clutch lever end to be 10 to 20 mm.

⚠ Note: Be sure that you protect specified torque.
Locking nut
Torque : 10N · m (1.0kgf · m)

- Reinstall the removed parts back in the reverse order of removal.

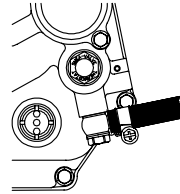
Rechecking after Installation

- With the engine turned off, shift the transmission to the first gear. Then, check that the rear wheel rotates when you move the machine, holding the clutch lever, and that the rear wheel does not rotate when you have released the clutch lever.
- Shift the transmission into NEUTRAL, and start the engine. Then check each section for oil leak. If nothing is wrong, do a test run at slow speed in a safe place to check the clutch operation.

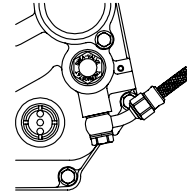
Important Notice

Oil Cooler Installation

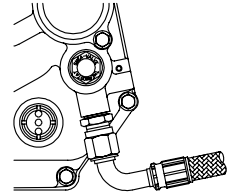
- In case a thermo unit is to be installed
 - Install a thermo unit.
 - Unfasten two oil plug bolts, and install an adapter suitable for the kind of hose you will use. Then connect the hose.
 - ※ Please see the instruction manual for the thermo unit.
 - ※ Please see the instruction manuals for the oil cooler kit and the adapter.



Rubber hose



Slim-line hose



Allegri hose

- In case an oil hose is to be installed on the side of the cylinder head

⚠ NOTE : NEVER install a thermo unit or an oil hole plug if you do not connect an oil hose to the clutch cover. There is a possibility that the engine is damaged due to the oil passage blockage.

In case an oil cooler is not installed

- NEVER install a thermo unit or an oil hole plug. And in case the thermo unit and/or an oil hole plug is installed, DO be sure to remove it or them.

⚠ NOTE : There is a possibility that the engine is damaged because the oil passage will be blocked when the thermo unit or an oil hole plug is installed.

