

Special Clutch Cover Kit TYPE-R (WET/Wire type) Instruction manual

Product number	02-01-0322 (Black paint)
	02-01-0287 (Silver paint)
Adaptation model	Monkey 125 (JB02-1000001 ~)

Thank you very much for purchasing our products.
 Thank you so you will comply with the following matters at the time of use.
 Before installation, please check your always kit contents.
 If there is a point of notice event, Please contact us the dealer of purchase.
◎ If the description, such as photos or Illustration different with this part.

☆ Please read carefully before use ☆

- ◎ The use ignoring the instructions that are written in the manual, if the accident or damage has occurred, we can not assume any responsibility for compensation.
- ◎ This product installation and use, when a problem occurs to after market goods, guarantee other than this product, also can not assume any in any such matters.
- ◎ If it was the case or mounting that has been processed like a product, it will not be covered under warranty.
- ◎ It is not possible to inquire of the combination of other manufacturers.
- ◎ This product is the above-mentioned vehicle exclusive goods. Is not possible attached to the other vehicle. Please note.
- ◎ Product may have edges or protrusions. Be sure to wear working gloves.
 (Please wear work gloves when working, even if a photo in this article show without work gloves.)
- ◎ Please refer to the genuine service manual for the above-mentioned compatible models for the assembly work.
- ◎ Special tools are required to install this product. Please prepare separately.
 Lock nut wrench: 00-01-0152 (Takekawa tool) Universal holder: 00-01-1002 (Takekawa tool)
- ◎ Although this product is mainly developed for WET clutch (wet type) specifications, it can be used even for DRY clutch (dry type) specifications without problems.
 (Hereinafter, WET clutch specifications will be referred to as "wet type", and DRY clutch specifications will be referred to as "dry type".)
- ◎ Caution: To install this product, you need to install the clutch inner kit (sold separately) and the install the designate transmission at the same time. Please select your kit from the following condition.

Clutch inner kit	Transmission	Remarks
02-02-0081 Special clutch inner kit TYPE-R (Special clutch TYPE-R for close ratio transmission)	02-04-0295 TAF 5-speed close ratio transmission kit (For special clutch TYPE-R) ※ 1	02-04-0293 When the TAF 5-speed close ratio transmission kit (for stock clutch) ※ 2 is installed, 02-02-0081/0083 can be installed by using 02-04-0296 (TAF 5-speed close ratio transmission conversion kit).
02-02-0083 Special clutch inner kit TYPE-R (Slipper clutch) (Special clutch TYPE-R for close ratio transmission)		
02-02-0155 Special clutch inner kit TYPE-R (For stock main shaft)	Stock transmission or 02-04-0292 4-speed close ratio transmission gear set (For stock clutch) ※ 3	02-04-0293 02-02-0155/0156 can be mounted on the TAF 5-speed close ratio transmission kit (for stock clutch).
02-02-0156 Special clutch inner kit TYPE-R (Slipper clutch) (For stock main shaft)		

※ 1. The main shaft of the close ratio transmission kit has a TYPE-R designated special clutch inner kit

※ 2. The main shaft of the close ratio transmission kit has a designated for the stock clutch.

※ 3. Both uses stock main shaft.

~ feature ~

- Rack & pinion wire clutch cover that enables light and smooth operation.
- R. Crankcase cover is made of die-cast aluminum with black paint, and clutch cover is made of forged aluminum with shot blast.
- By adopting a paper cartridge oil element, the centrifugal oil filter can be removed and reducing the load on the crankshaft and improving engine response.
- Thermostat unit (02-01-5052: optional) can be installed. Thermostat prevents overcooling with oil cooler.
- The oil level window makes it easy to check the oil level.
- Filtered oil flows through the oil element by two passage (crankshaft / transmission) with this kit.
 (In the stock clutch cover, only one crankshaft passage passes through the centrifugal filter from oil pump).
- ※ By connecting our bore-up cylinder (oil outlet equipped model) and oil line hose kit (00-07-0095: optional), the oil through the oil element can flow to the cylinder head.
- Clutch cover for Takagawa special clutch.
- Since the clutch is divided from the crank/transmission case, so that the engine oil and clutch oil can be used for different specifications (brand/viscosity).

⚠ Caution When the handling of ignoring this display, property damage and human shows the assumption of what injury.

- On the street, keep the legal speed and obey the traffic law.
 (If you drive faster than the legal speed, you will be punished for violating the Road Traffic Act and speeding.)
- When performing the work, etc., be sure during the cold (when the engine and the muffler is cold). (It may cause burns.)
- When performing the work, it should be made to prepare the tools for the job. (Breakage of parts, it may cause injury.)
- Do the work must always specified torque using a torque wrench. (Damage of bolts and nuts, and cause of dropout.)
- The product and the frame, might have edges or protrusions. When working, please wear work gloves to protect your hands. (It may cause injury.)
- Be sure to each part inspection before operation, check the loosening of the threaded portion, be sure to securely tighten the specified torque if there is loose. (It may cause detachment of the parts.)

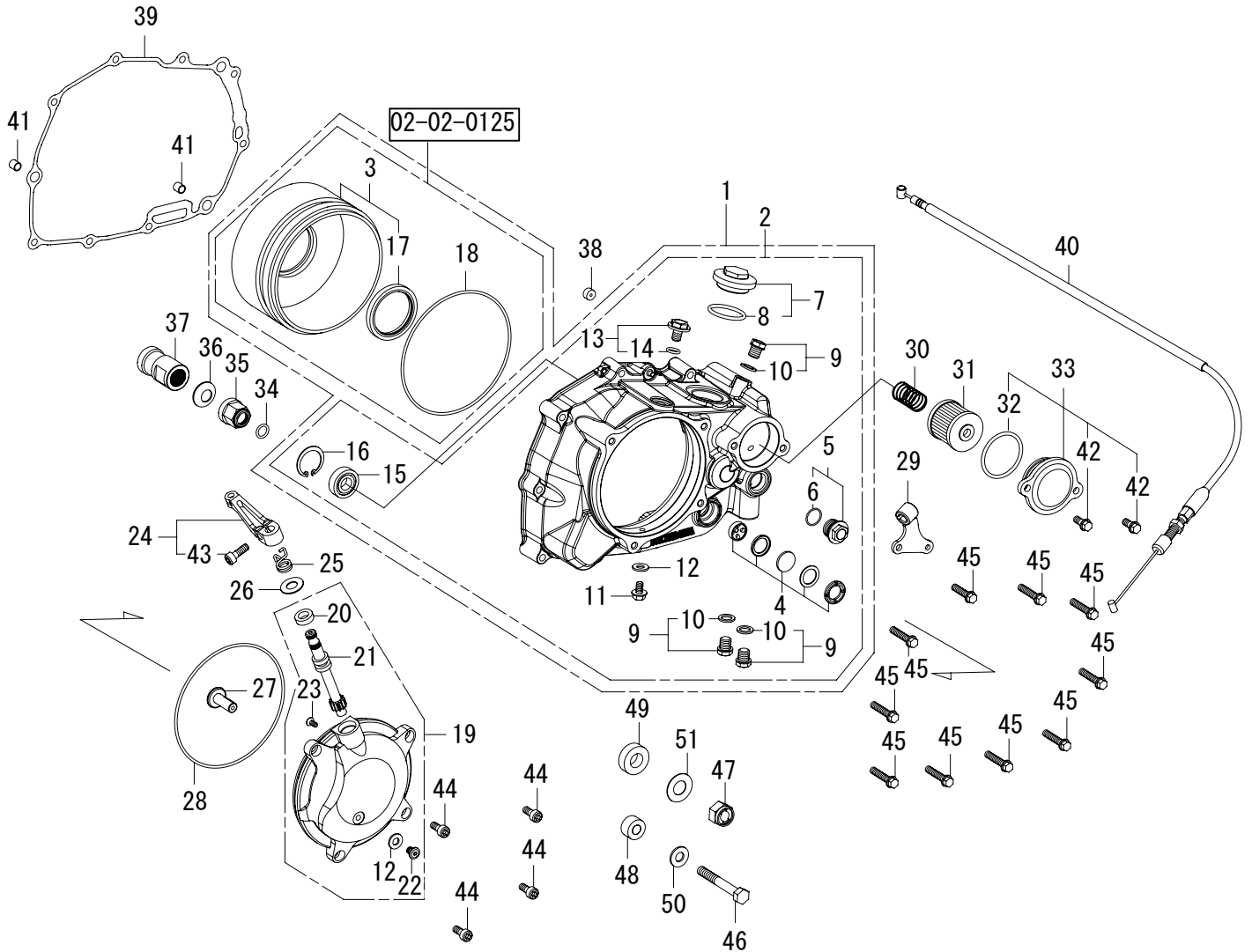
⚠ Warning When the handling of ignoring this display people died, shows the contents of the serious injury possibility is assumed.

- The technology and those who no knowledge, please do not to work. (The cause of parts damage etc., could result in falls and accidents.)
- If you start the engine, be sure in a well-ventilated place. In the sealed such place, please do not start the engine.
 (There is a risk of carbon monoxide poisoning.)
- During operation, when an abnormality occurs, immediately stop the vehicle in a safe place, please stop running. (It may lead to an accident.)
- When performing the work, do the work safely stabilize the vehicle in a horizontal location.
 (There is a risk of injury vehicle collapsed while working.)
- Inspection, maintenance, the instruction manual or, inspection methods such as service manuals, to protect the way, should be done correctly. (unsuitable inspection and maintenance, there is a risk that result to an accident.)
- When carrying out the inspection and maintenance, etc., if found damaged parts, replace the damaged parts to avoid possible to reuse he parts. (There is a risk that lead to accidents Continued use.)
- The engine and exhaust system are hot while the engine is running or for a while even the engine is stopped. Never place dangerous or flammable materials such as gasoline near working area. (May caused fire.)

- ◎ Please note. Performance up, the design change, the product and the price in the cost up, etc. are subject to change without notice.
- ◎ Please be informed that we shall be held harmless against any claim against us whatsoever arising out of use of the products in racing and the like.
- ◎ Keep this manual stored until this product is discarded.

SPECIAL PARTS
TAKEGAWA

CONTACT Address : 3-5-16 Nishikiorihigashi Tondabayashi Osaka JAPAN
 TEL: +81-721-25-1357 FAX: +81-721-24-5059 e-mail: english@takegawa.co.jp URL http://www.takegawa.co.jp
 Please contact with your name and country name provided. (Only English please)

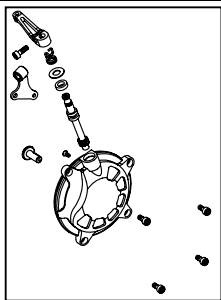


Number	Product content	Quantity	Item Number	Number	Product content	Quantity	Item Number
1	R.crankcase cover set	1	00-02-6211 (Black) 00-02-0467 (Silver)	26	Plain washer, 10mm	1	00-00-0151 (10 pcs)
2	R.crankcase cover ASSY.	1	00-02-6208 (Black) 00-02-0466 (Silver)	27	Release rack	1	00-02-0039
3	Separator COMP.	1	02-02-0125 (with O-ring)	28	O-ring, 120mm	1	00-02-0188
4	Oil pot window set	1	00-02-0031	29	Clutch cable receiver COMP.	1	00-00-1676
5	Thermostat hole cap	1	00-07-0063 (with O-ring)	30	Oil filter spring	1	00-07-0065
6	O-ring, 15mm	1	00-00-0185 (5 pcs)	31	Oil filter element	1	00-02-0027
7	Hole cap	1	09-06-0131 (with O-ring)	32	O-ring, 40mm	1	00-02-0040
8	O-ring, 30mm	1	00-01-0034 (4 pcs)	33	Oil filter cover	1	00-02-0470 (with O-ring/Bolt)
9	Oil plug bolt	3	00-07-0072 (with Sealing washer)	34	O-ring, 12mm	1	00-00-0136
10	Sealing washer, 10mm	3	00-07-0106 (10 pcs)	35	Oil through nut	1	00-00-2310
11	Flange bolt, 6x12	1	00-00-0322 (6 pcs)	36	Conical spring washer, 14mm	1	00-02-0036
12	Sealing washer, 6mm	2	00-00-2780	37	Spacer	1	00-00-1414
13	Oil filler cap	1	00-02-0468 (with O-ring)	38	Orifice	1	00-00-1072
14	O-ring, 13mm	1	00-00-0644 (5 pcs)	39	R.crankcase cover gasket	1	00-02-0356
15	Bolt bearing, 6001Z	1	00-01-1011	40	Clutch cable COMP. 850mm	1	00-02-0133
16	C type ring, 28mm	1	00-00-0643 (3 pcs)	41	Dowel pin, 8x12	2	00-00-0153 (2 pcs)
17	Oil seal, 54x70x9	1	00-02-0364	42	Flange bolt, 6x16	2	00-00-0879 (5 pcs)
18	O-ring, 120mm	1	00-00-0656	43	Socket cap screw, 6x18	1	00-00-0720 (5 pcs)
19	Clutch cover COMP.	1	00-00-1089	44	Socket cap screw, 6x15	4	00-00-0718 (5 pcs)
20	Oil seal, 10x17x5	1	00-02-0006	45	Flange bolt, 6x40	10	00-00-0886 (5 pcs)
21	Clutch release pinion	1	00-02-0033	46	Hexagon bolt, 8x45	1	00-00-0914
22	Extra low head cap screw, 6x8	1	00-00-0642 (6 pcs)	47	U nut, M12x1.25	1	00-00-0915
23	Flat head screw, 4x10	1	00-00-0190 (6 pcs)	48	Coller 1	1	00-00-2594
24	Release arm	1	00-02-0469 (with Bolt)	49	Coller 2	1	00-00-2595
25	Clutch arm spring	1	00-02-0112	50	Plain washer, 8mm	1	00-00-0076 (10 pcs)
				51	Shim ring, 12x18x0.5	1	00-00-0370

※ Please order in the repair parts are always repair part number. If it is not the part number order, you may not be able to order.

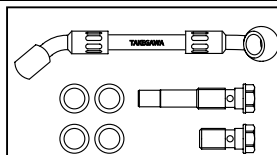
Please be forewarned. It should be noted, In the case of parts that can not be separately shipment, please order a set part number.

※ Repair parts may differ slightly from the kit contents in terms of shape, etc. There is no problem to use it. Please be forewarned.



Clutch cover kit (Wire type • Dry)
:02-02-0126

Cover kit for dry type clutch.
It is possible to use it as a dry type clutch with the clutch cover of this kit, but by replacing it with this special dry type clutch cover kit, you can obtain a better cooling effect due to the large ventilation hole.

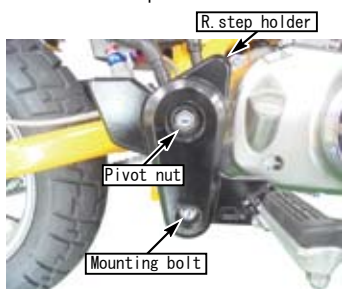


Oil line hose kit:00-07-0095

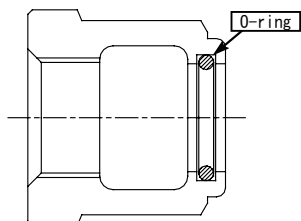
By using with Takegawa oil outlet equipped (bore up) cylinder and this clutch cover kit, you can send clean oil through the oil filter element to the cylinder head.

■ Mounting procedure ※ Please refer to the Genuine Service Manual for detailed mounting methods and specified torques that are not specifically described.

- Park the motorcycle in a horizontal place with a maintenance stand, etc.
- Drain engine oil.
- Remove the R. step holder.

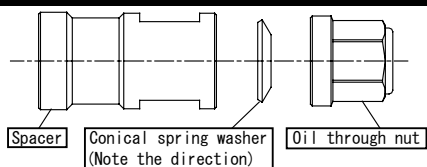


- When installing the close ratio transmission kit at the same time, refer to the close ratio transmission installation manual.
- For stock transmission, refer to the service manual and remove the R. crankcase cover, centrifugal oil filter and clutch.
- Attach the O-ring (12mm) to the oil through nut and apply a engine oil to the O-ring.



- Attach the spacer, conical spring washer (14mm), and oil through nut to the crankshaft in this order, hold the spacer with a spanner, and tighten the oil through nut to the specified torque.

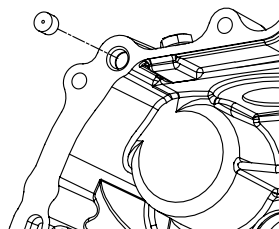
▲ Note: Be sure that you protect specified torque.
Oil through nut
Torque : 64N • m (6.6kgf • m)



- Attach the primary driven gear assembly by referring to the installation manual for the special clutch inner kit TYPE-R.

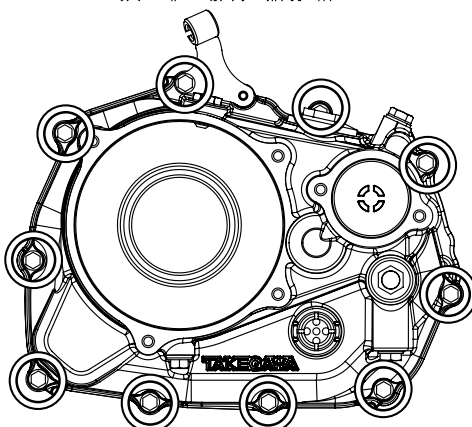
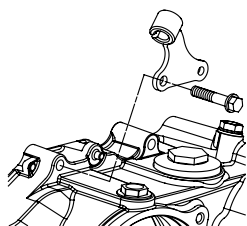
Installing the clutch cover

- Clean the gasket surface of the R. crankcase, attach the dowel pin, and install a new R. crankcase cover gasket.
- Attach the orifice in the kit to the back of the R. crankcase.



- Attach R. Crankcase cover, clamp and clutch cable receiver COMP. with flange bolts (6x40), divide bolts several times diagonally and tighten to specified torque.

▲ Note: Be sure that you protect specified torque.
Flange bolt, 6x40
Torque : 10N • m (1.0kgf • m)



- Attach the clutch by referring to the installation manual for the special clutch inner kit TYPE-R.
- Attach the O-ring (120mm) to the clutch cover COMP. and apply a engine oil to the O-ring (120mm).

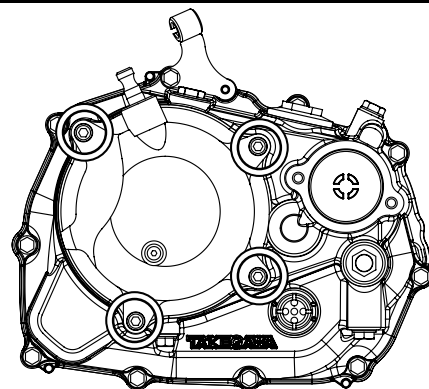


- Apply grease to the release rack and attach it to the clutch cover COMP.



- Attach the clutch cover COMP. to the R. crankcase cover, install it with the socket cap screw (6x15) and tighten it to the specified torque.

▲ Note: Be sure that you protect specified torque.
Socket cap screw, 6x15
Torque : 10N • m (1.0kgf • m)

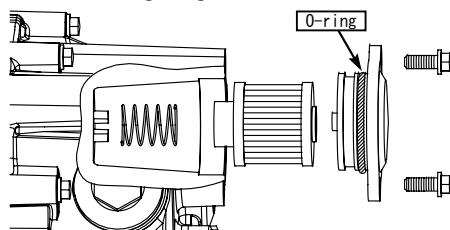


Installing the oil filter cover

- Place the oil filter spring in the R. crankcase cover (fit it into the guide of the case), put the oil filter element, attach the O-ring (40mm) to the oil filter cover, apply engine oil, and attach the flange bolt (6x16). Tighten with specified torque.

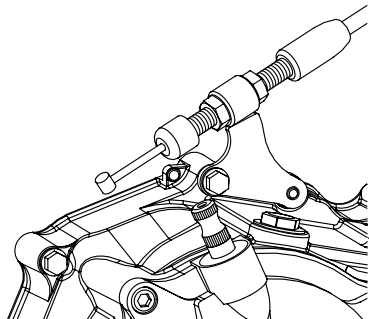
▲ Note: Be sure that you protect specified torque.
Flange bolt, 6x16
Torque : 10N • m (1.0kgf • m)

- ※ Make sure the oil filter attached the guide on the oil filter cover.
- ※ Caution: If the oil filter spring does not fit inside of the guide (of the oil filter), there will be a gap between the oil filter cover and the R. crankcase cover. This may cause the oil leaks.
- ※ Install the O-ring at the position shown below.
- Caution: Incorrect installed O-ring is may caused damage engine.

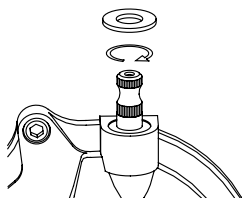


Installing the clutch cable

- Attach the clutch cable COMP. to the clutch lever and route it to the clutch cable receiver COMP. for the cable is not overloaded.
- Attach the adjuster of the clutch cable COMP. to the clutch cable receiver COMP.

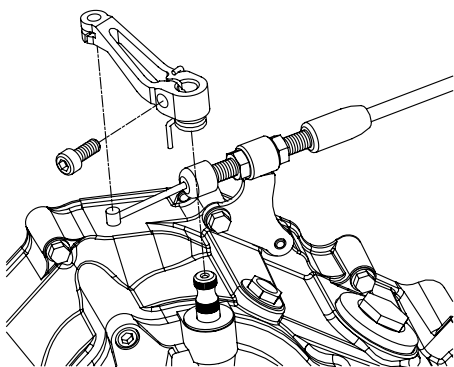


- Turn the clutch release pinion clockwise until it stops, and insert a plain washer (10mm) into the clutch release pinion.



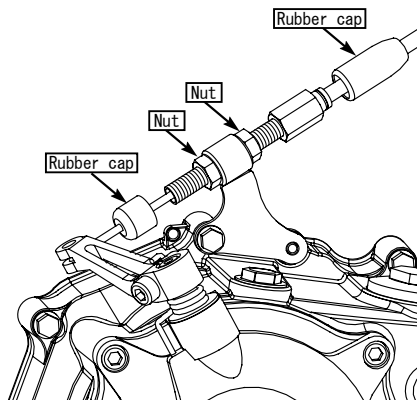
- Attach the cable end to the release arm, set the clutch arm spring, insert the inner cable into the release pinion while the cable pulled, and hook the clutch arm spring to the cover.
- Attach the socket cap screw (6x18) to the release arm and tighten the socket cap screw to the specified torque with the arm pushed in.

⚠ Note: Be sure that you protect specified torque.
Socket cap screw, 6x18
Torque : 10N · m (1.0kgf · m)

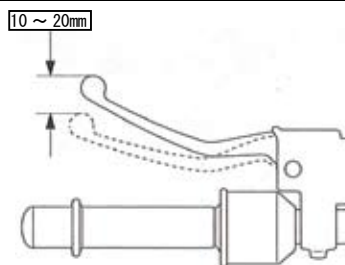


- Adjust the clutch free play at the adjustment part of the clutch cable COMP., tighten the nut to the specified torque, and cover each with a rubber cap.

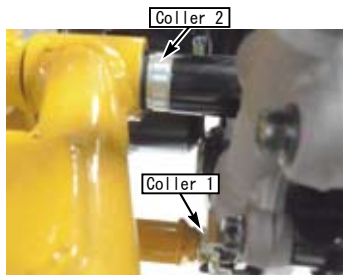
⚠ Note: Be sure that you protect specified torque.
Nut
Torque : 10N · m (1.0kgf · m)



Clutch free play
10 to 20 mm at the clutch lever end



- Set color 1 and color 2 on the back side of the R. step holder.



- Attach R. step holder with shim ring (12x18x0.5), U nut (M12x1.25), washer (8mm) and hex bolt (8x45).

⚠ Note: Be sure that you protect specified torque.
U nut, M12x1.25
Torque : 54N · m (5.5kgf · m)
Hexagon bolt 8x45
Torque : 31N · m (3.1kgf · m)

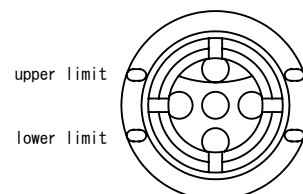


After assembly

- After confirming that the drain bolt {T=24N · m (2.4kgf · m)} is tightened, pour engine oil, attach the O-ring to the hole cap, apply a small amount of engine oil to the O-ring. Tighten to the specified torque.

⚠ Note: Be sure that you protect specified torque.
Hole cap
Torque : 12N · m (1.2kgf · m)

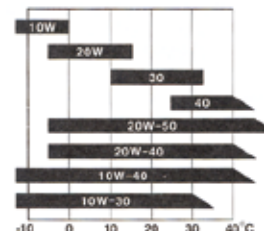
- Check the amount of oil in the oil level check window frequently, and if it is below the lower limit, add the oil.



- Recommended oil
SAE 10W-40 20W-50
API classification : SG, SH, SJ, SL equivalent
JASO standard : MA

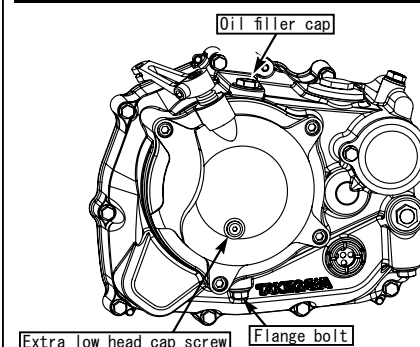
- Oil capacity
When changing oil : 750cc
When overhauled : 950cc

- For the engine oil viscosity, refer to the figure and use the oil with the viscosity suitable for the environment and the outside temperature.



- Removing the oil filler cap and the low head cap screw, pour engine oil and pour until the engine oil comes from the hole at low head cap screw. Install the oil filler cap and low head cap screw and tighten them to the specified torque.

⚠ Note: Be sure that you protect specified torque.
Oil filler cap
Torque : 12N · m (1.02gf · m)
Extra low head cap screw
Torque : 6.3N · m (0.63kgf · m)



- ※ Check the amount and change the oil frequently. Remove the flange bolt {T=12N・m(1.2kgf)} and drain the oil.
- ※ Amount of oil in clutch chamber :approx. 105cc

- ※ The viscosity and amount of engine oil affects the of clutch disengagement.
Caution: not to use high viscosity or over amount.

- ※ As described above, this clutch cover is design to be used as a wet type clutch but it can also be used as a dry type clutch without oil. Caution when use as Dry type clutch

- When using it as a dry type clutch, "Remove the flange bolts(not use)" because condensation may form inside the clutch chamber.
- After using as the wet type clutch and like change to use as a dry type clutch, use the new friction disc and degrease all other parts. the remains oil may cause seizing.

- Shift the transmission to first gear with the engine stopped and squeeze the clutch lever.

When moving the vehicle, make sure that the rear wheel does not rotate when the rear wheel rotates and the clutch lever is released.

- Start the engine with the transmission in neutral and check all parts for oil leaks.

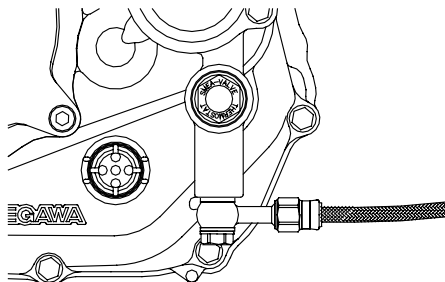
⚠ Warning : Be sure to start the engine in a well-ventilated place.

- If there is no problems, test ride at low-speed in a safe place to check the operation of the clutch.

Caution

Precautions when installing an oil cooler

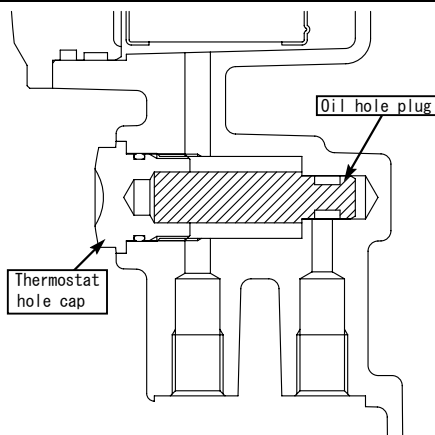
- When installing an optional thermostat unit
 - Installing the thermostat unit.
 - Remove the two oil plug bolts, attach an adapter that matches the type of hose to be used, and connect the hose.
- ※ Check the thermostat unit instruction manual.
- ※ Check the oil cooler kit instruction manual and adapter instruction manual.



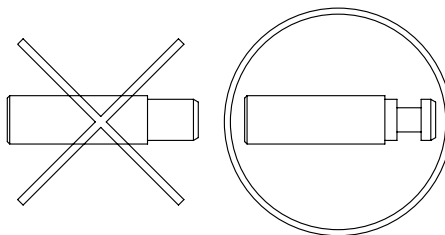
- When not installing the thermostat unit

- Remove the thermostat hole cap and insert the oil hole plug (00-02-0391) into the oil hole.
- Apply engine oil to the O-ring of the thermostat hole and tighten the hole cap to the specified torque.

⚠ Note: Be sure that you protect specified torque.
Hole cap
Torque : 13N・m (1.3kgf・m)



- Do not use oil hole plugs (00-02-0111).



⚠ Note: If use the oil hole plug (00-02-0111), the oil passage will be closed and the engine may be damaged.

- When installing an oil hose to the oil outlet of the cylinder

⚠ Note: Never attach the thermostat unit or oil hole plug when the oil hose is not connected to the clutch cover. Oil passage will closed and engine may be damaged.

When not installing an oil cooler

- Never install a thermostat unit or oil hole plug.
Remove a thermostat unit or oil hole plug.

⚠ Note: When the thermostat unit or oil hole plug is installed, the oil passage is closed and the engine may be damaged.

Caution: installing the oil line hose kit (00-07-0095)

- Bend the clamp to avoid lower sensor wire clamp interferes with the oil line.

