



Aluminum Special Clutch Cover Kit Instruction Manual

(Only for manual-clutch transmission motorcycles)

Item No. : 0 2 0 1 5 0 7 0

Fit:

Frame No.:

Monkey Z50J-1600007 ~ /Z50J-2000001 ~ /AB27-1000001 ~

Monkey (FI) AB27-1900001 ~

Gorilla Z50J-1600007 ~

- Thank you for purchasing one of our products. Please strictly follow the following instructions in installing and using the kit.
- Before installing the kit, please be sure to check the kit contents. Should you have any questions about the kit, please contact your local motorcycle dealer.

Please note that, in some cases, the illustrations and photos may vary from the actual hardware.

Read all instructions first before starting the installation

We do not take any responsibility for any accident or damage whatsoever arising from the use of the kit not in conformity with the instructions in the manual.

We shall be held free from any kind of warranty whatsoever of products other than this product if the glitch takes place on the other products than this one after the installation and use of this product.

You are kindly requested not to contact us about the combination of our products with other manufacturers'.

Please note that this kit is designed for exclusive use in the above-mentioned applicable models and frame numbers only and that it cannot be mounted on other models.

Those who are technically unskilled or inexperienced are required not to do the work. (Improper installation because of insufficient skill or knowledge could lead to parts breakage.)

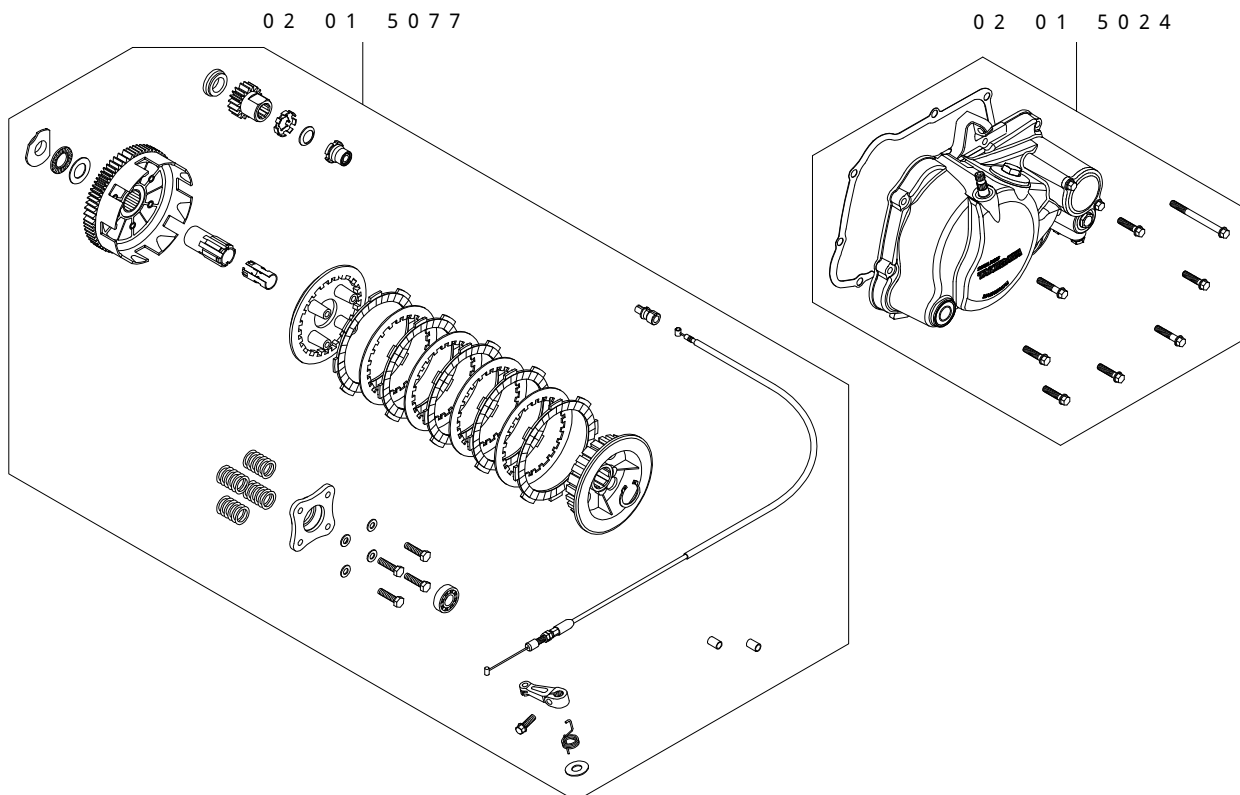
Please be informed that, mainly because of improvement in performance, design changes, and cost increase, the product specifications and prices are subject to change without prior notice.

Our clutch lever is additionally needed in case of installation of this kit onto a motorcycle of frame Nos from Z50J-1300027 to 160006.

This is a kit combining an aluminum die-cast special clutch cover kit and a special clutch standard kit for a stock main shaft. For the installation, please refer to the instruction manual for each kit.

In case this kit is to be installed on a motorcycle with a frame No. between Z50J-1300017 to 1600006, please prepare either our clutch lever, or a combination switch with a lever, because the provided clutch cable cannot be attached to a stock clutch holder.

~ Kit Contents ~



Item No.	Part Name	Qty
02-01-5077	Special Clutch Standard Kit (for a stock mainshaft)	1
02-01-5024	Aluminum Die-Cast Clutch Cover Kit (Brown Painting)	1

SPECIAL PARTS TAKEGAWA Co.,Ltd.

3-5-16 Nishikiorihigashi Tondabayashi Osaka Japan

TEL : 81-721-25-1357 FAX : 81-721-24-5059

URL : <http://www.takegawa.co.jp>