



# Standard Kit for Special Clutch for Die-Cast Cover Instruction Manual

(Only for manual transmission)

Item No. : 0 2 - 0 1 - 5 0 7 5  
(Only for 6V 4-speed stock transmission)  
Compatible Models : Monkey / Gorilla  
Frame Nos : Z50J-1354719 ~ 1805927

- Thank you for purchasing one of our Tproducts. Please strictly follow the following instructions in installing and using the kit.
- Before installing the kit, please be sure to check the kit contents. Should you have any questions about the kit, please contact your local motorcycle dealer.

**Please note that, in some cases, the illustrations and photos may vary from the actual hardware.**

## Features

This Special Clutch can be installed on a stock transmission as it is.

As the clutch is installed on the secondary side (on the transmission main shaft), the friction loss on the crankshaft can be reduced and the crankshaft durability and throttle response can be improved.

We have designed the number of clutch friction disks to be five in order to correspond to the high-powered engine with a large engine displacement. Six pieces of dampers are fixed to the primary driven gear, which works to reduce the shock felt at the time of letting in the clutch.

## Read all instructions first before starting the installation.

We do not take any responsibility for any accident or damage whatsoever arising from the use of the kit not in conformity with the instructions in the manual.

We shall be held free from any kind of warranty whatsoever of products other than this product if the glitch takes place on the other products than this one after the installation and use of this product.

If you make modifications to any product of the kit, we shall be held free from any guarantee of the product.

You are kindly requested not to contact us about the combination of our products with other manufacturers'.

Installation of this kit requires removal and installation of an engine, disassembly of a crankcase, special tools and some processing. This instruction manual, as well as a HONDA's service manual, is prepared for those who have acquired basic skill and knowledge. Therefore, those who are technically unskilled or inexperienced may not be able to install the kit correctly or may be unable to install at all, leading to parts breakage.

Please note that this kit is designed for exclusive use in the above-mentioned compatible models and frame numbers only and that it cannot be mounted on other models.

This kit doesn't come with a clutch cover. A TAKEGAWA-made extra-cost die-cast clutch cover kit is necessary.

The installation of this Kit makes it impossible to install a stock muffler. And if you install our Z-style muffler, the cable receiver on the cover and the muffler protector interfere with each other. However, you will be able to install the muffler if you modify the interfering portion on the protector.

Please be informed that, mainly because of improvement in performance, design changes, and cost increase, the product specifications and prices are subject to change without prior notice.

This manual should be retained for future reference.

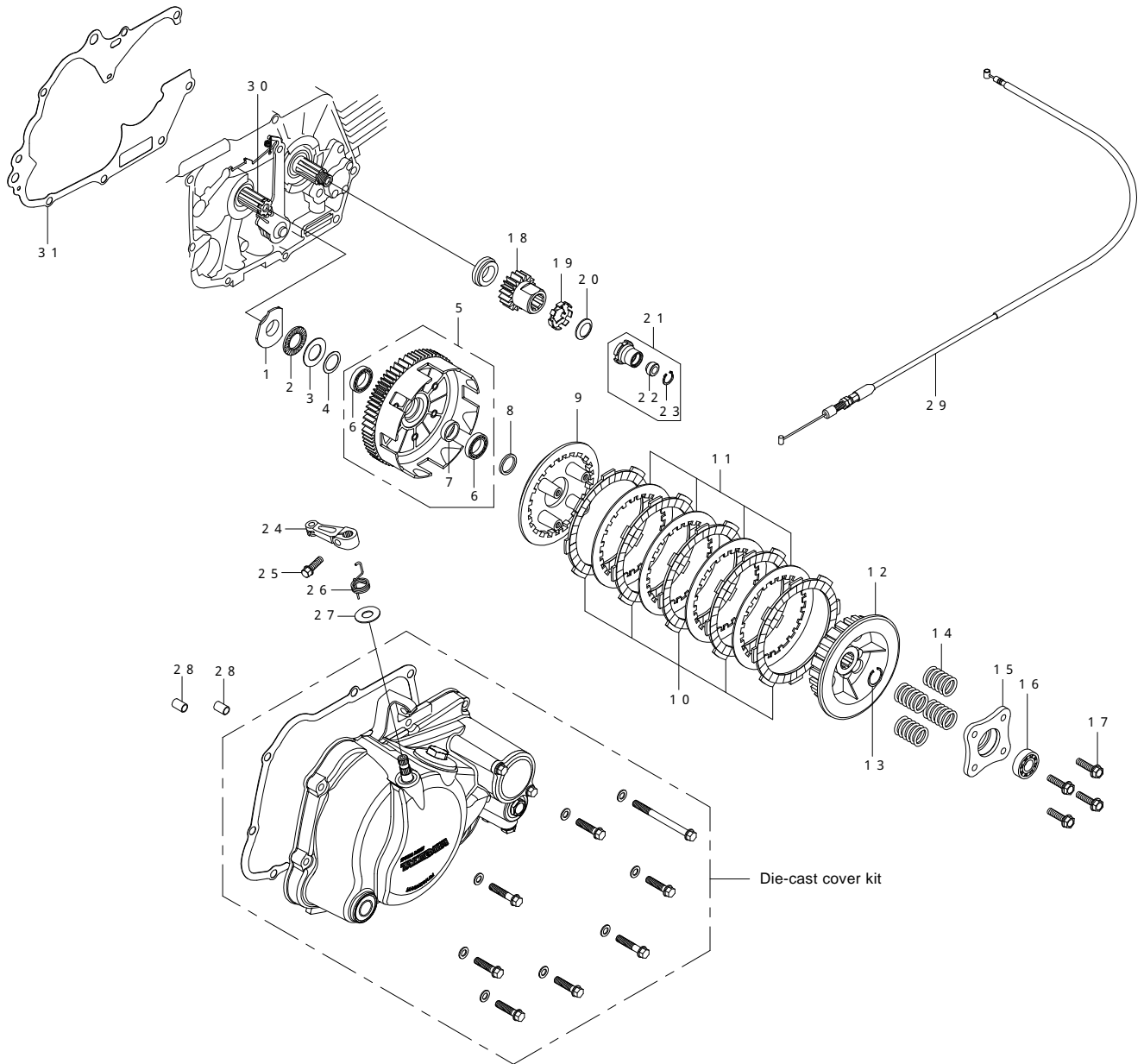
**CAUTION** The following show the envisioned possibility of injuries to human bodies and property damage as a result of disregarding the following cautions.

- Before starting the installation, make sure the engine and muffler are cool. (Otherwise, you will burn yourself.)
- Always use a torque wrench to screw bolts and nuts tight and securely to the specified torque. (Otherwise, these parts may get damaged or fall off, resulting in accidents.)
- As some products and frames have sharp edges or protruding portions, please work with your hands protected. (Otherwise, you will suffer injuries.)
- Before riding, always check every section for slack in parts like screws. If you find slack ones, screw them securely up to the specified torque. (Otherwise, improper tightening may cause parts to come off.)

**WARNING** The following show the envisioned possibility of human death or serious injuries to human bodies as a result of disregarding the following cautions.

- Always start the engine in a well-ventilated place, and do not turn on the engine in an airtight place. (Otherwise, you will suffer from carbon monoxide poisoning.)
- When you notice something abnormal with your motorcycle while riding, immediately stop riding and park your motorcycle in a safe place to check what has gone wrong. (Otherwise, the abnormality could lead to accidents.)
- Before doing work, place the motorcycle on level ground to stabilize the position of your motorcycle for safety's sake. (Otherwise, your motorcycle could overturn and injure you while you are working.)
- Check or carry out maintenance of your motorcycle correctly according to the procedures in the instruction manual or service manual. (Improper checking or maintenance could lead to accidents.)
- If you find damaged parts when checking and performing maintenance of your motorcycle, do not use these parts any longer, and replace them with new ones. (The continued use of these damaged parts could lead to accidents.)
- As gasoline is highly flammable, never place it close to fire. Make sure that nothing flammable is near the gasoline. Since vaporized accumulation of gasoline is at the high risk of explosion, work in a well-ventilated place.

## Kit Contents



No.	Part Name	Qty	Repair Part Item No.	in packs of	No.	Part Name	Qty	Repair Part Item No.	in packs of
1	Thrust bearing seat	1	22301-181-T00	1	17	Flange hex bolt, 6x22	4	00-02-0098	4
2	Thrust bearing, 17 mm	1	00-02-0061	1	18	Primary drive gear, 18T	1	23121-181-T01	1
3	Thrust washer, 17x30x1	1	00-02-0060	1	19	Lock washer, 14 mm	1	90431-001-T00	1
4	Washer, 17x23x0.5	1	00-02-0097	1	20	Conical spring washer, 14 mm	1	00-02-0036	1
5	Clutch outer COMP., 67T	1	00-02-0030	1	21	Lock nut COMP., 14 mm	1	90200-181-T00	1
6	Radial ball bearing, 6803	2	00-00-0024	1	22	Oil seal, 6x13x5	1	00-02-0037	1
7	Distance collar	1	28242-181-T00	1	23	C-ring, 13 mm	1	00-02-0099	5
8	Clutch spacer, 17x21.5x3	1	23512-GEF-T00	1	24	Clutch release arm	1	22812-181-T00	1
9	Clutch pressure plate	1	22350-KRL-T00	1	25	Flang bolt, 6x18	1	00-00-0023	5
10	Clutch friction disk	5	00-02-0026	1	26	Clutch release arm spring	1	22815-165-T00	1
11	Clutch plate	4	00-02-0029	1	27	Plain washer, 10 mm	1	00-00-0151	10
12	Clutch center	1	22120-181-T00	1	28	Dowel pin, 8x12	2	00-00-0153	2
13	External circlip, 17 mm	1	00-02-0005	5	29	Clutch cable, COMP., 850 mm	1	22870-KL1-T00	1
14	Clutch spring	4	22401-181-T00	1	30	Main shaft, 13T	1	23211-165-T60	1
15	Clutch lifter plate	1	22361-GEF-T00	1	31	Crankcase gasket	1	00-01-1032	1
16	Radial ball bearing, 6001	1	00-00-0021	1					

Please order repair parts with the Repair Part Item No. Without the repair part item No., we may not be able to provide the correct parts. Some parts are only available as a set. Please order them with the set number.

The supplied clutch cable cannot be installed on a motorcycle of a frame No. from Z50J-1354719 to 1510400 with a lever holder welded to a handle pipe, because of a different size of a cable-mounting portion.

However, installation of the following HONDA-made genuine parts makes it possible to install the provided clutch cable, except for motorcycles fitted with a TAKEGAWA-made clutch lever and combination switch.

### On the Monkey

Part No.	Part Name	Qty
53120-165-640	pipe, left steering handle	1
35200-165-641	switch assembly, winker horn	1
53178-165-640	lever, left steering handle	1
90115-170-700	screw, handle lever pivot	1
93500-05025-0A	screw, 5x25 pan	1
93500-05040-0A	screw, 5x40 pan	1
94001-05000-0S	hexagonal 5mm nut	1

### On the Gorilla

Part No.	Part Name	Qty
53100-165-630ZA	pipe, steering handle (matte black), or	1
35100-165-710	pipe, steering handle (chrome plating)	1
35200-165-641	switch assembly, winker horn	1
53178-165-640	lever, left steering handle	1
90115-170-700	screw, handle lever pivot	1
93500-05025-0A	screw, 5x25 pan	1
93500-05040-0A	screw, 5x40 pan	1
94001-05000-0S	hexagonal 5mm nut	1

Additional arrangement of a front brake lever and a holder is needed.

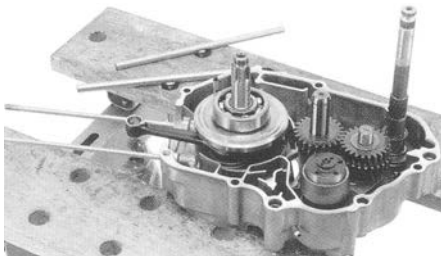
**This Installation Procedures relate to the work at a stage after the engine has already been demounted from the frame. For the work before this stage, please refer to an owner's or service manual, instruction manual for each product, or engine tuning master book.**

## Installation Procedures

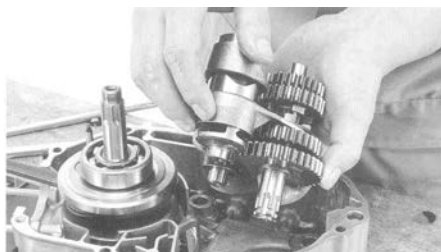
### Disassembly:

(Please do the following work referring to a service manual.)

- 1 . Disassemble an engine, and then separate a crankcase.



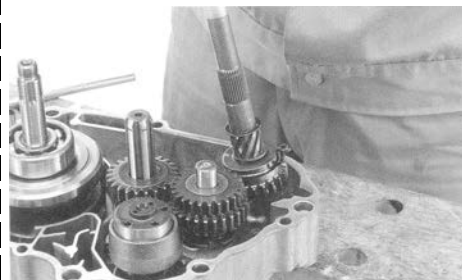
- 2 . Detach a kick starter spindle, and then a transmission, gear shaft drum and all.



### Assembly:

#### Transmission assembly

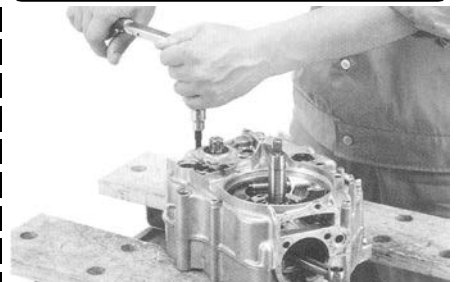
- 1 . Remove each gear from the main shaft and install them onto the provided main shaft in the same way as the stock ones.
- 2 Install a transmission and shift drum as a unit onto the crankcase, and then a starter spindle. Beware of an oil seal for a countershaft. Install a transmission with the gear in neutral.



- 3 . Clean the mating surfaces of the crankcases, and install two dowel pins and a new crankcase gasket to the crankcases. And join right and left crankcases together, and tighten up bolts diagonally in a few steps to the specified torque.

⚠ Caution: Apply the specified torque.

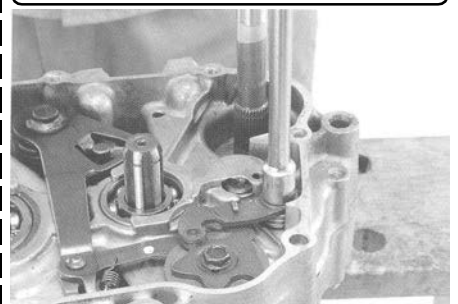
**Torque: 10 N · m (1.0 kgf · m)**



- 4 . Attach a gear-shift spindle COMP. to the crankcase, and attach a shift-drum stopper plate, shift-drum stopper spring and shift-drum stopper COMP. And tighten bolts to the specified torque.

⚠ Caution: Apply the specified torque.

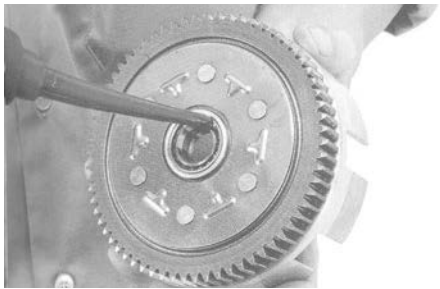
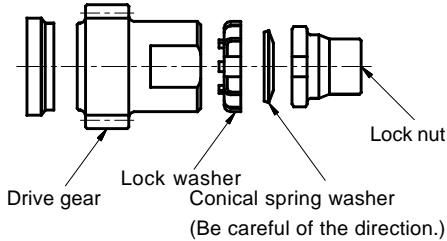
**Torque: 10 N · m (1.0 kgf · m)**



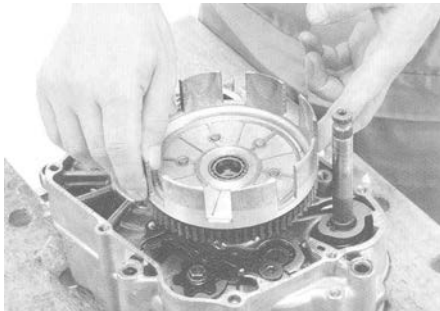
## Installation of primary drive gear

1 .First make sure that a stock collar is in the crankshaft. Then attach a primary drive gear, lock washer, and conical spring washer, which please fasten with a lock nut for the moment.

Be careful about the direction in which to attach the conical spring washer.



2 . Into a transmission main shaft, put a thrust bearing seat, thrust bearing, thrust washer, and washer in this order, and attach a clutch outer COMP to the transmission main shaft. Set the thrust bearing seat in the location so its protrusion gets stuck on the crankcase, preventing it from rotating. Apply engine oil to the thrust washer and clutch outer ball bearing.



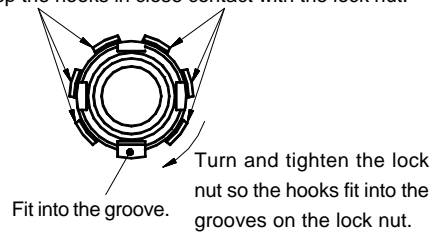
3 .Using a gear holder, tighten the lock nut to the specified torque with the crankshaft being seated in detect, and fold back the hook on the lock washer.

⚠ Caution: Apply the specified torque.  
Torque: **39 N · m (4.0 kgf · m)**

After tightening the lock nut to the specified torque, turn the lock nut in the direction of tightening if the hook on the lock washer does not fit in the lock nut groove. Keep other hooks in close contact with the lock nut.

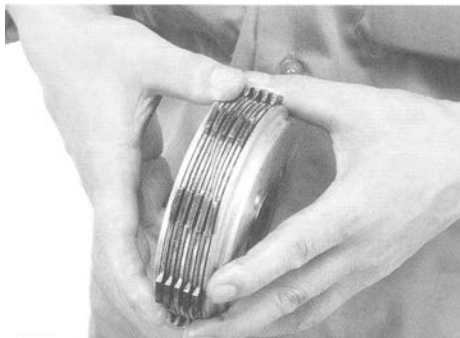


Keep the hooks in close contact with the lock nut.

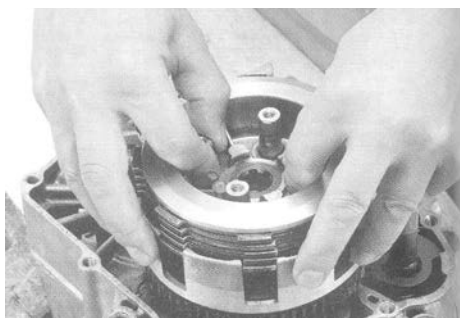


## Clutch assembly:

1 . To clutch center, attach alternately one each of five friction disks and four clutch plates, and then a clutch pressure plate. Apply engine oil to both sides of the clutch friction disk. Check that the bumpy surfaces of the clutch center and clutch friction disk are meshing well with each other.



2 . Attach the clutch spacer to the transmission main shaft. Fitting the protrusion on the clutch friction disk into the groove in the clutch outer, and also fitting, at the same time, the spline on the clutch center into the spline on the main shaft, attach the clutch assembly.



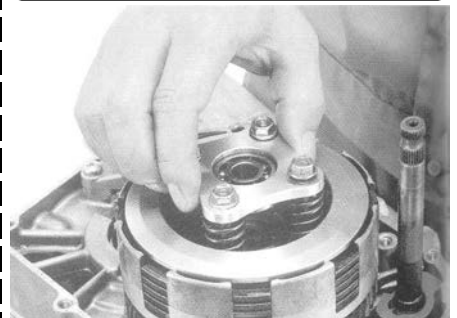
3 . Fit the supplied external circlip to the groove in the main shaft with the circlip's round corner on the downside. Don't expand the circlip more than necessary.

In case you find it hard to fit the circlip into the mainshaft groove, then do the work lifting up the main shaft.



4 . Place four clutch springs into the pressure-plate boss, and fix the clutch lifter plate with a flange hex bolt. And tighten it to the specified torque diagonally in a few steps.

⚠ Caution: Apply the specified torque.  
Torque: **12 N · m (1.2 kgf · m)**



## Assembly of right crankcase cover and clutch cable

Please assemble these parts referring to the instruction manual for the die-cast clutch cover kit.

Please assemble the engine referring to the instruction manual for the relative engine.

**SPECIAL PARTS TAKEGAWA** Co.,Ltd.

3-5-16 Nishikiorihigashi Tondabayashi  
Osaka Japan

TEL : 81-721-25-1357 FAX : 81-721-24-5059

URL : <http://www.takegawa.co.jp>