

# Large-diameter air duct Instruction manual

Product number 03-01-0002

Adaptation model and chassis numbers	GROM : JC61-1000001 ~ 1299999
	: JC61-1300001 ~
	MSX125
	MSX125SF

Thank you very much for purchasing our products.

Thank you so you will comply with the following matters at the time of use. Before installation, please check your always kit contents.

If there is a point of notice event, Please contact us the dealer of purchase.

◎ If the description, such as photos or Illustration different with this part.

## ■ Features

- Suction efficiency is improved by simply replacing the original duct, output across up to high rotation from low rotation is up, even if it is mounted on the original engine.
- As compared to diameter of genuine air cleaner duct it has been increased by about 30 percent because supports wide range from normal up to tuning engine.

## ● Please read carefully before use

- ◎ The use ignoring the instructions that are written in the manual, if the accident or damage has occurred, we can not assume any responsibility for compensation.
- ◎ This product installation and use, when a problem occurs to after market goods, guarantee other than this product, also can not assume any in any such matters.
- ◎ If it was the case or mounting that has been processed like a product, it will not be covered under warranty.
- ◎ It is not possible to inquire of the combination of other manufacturers.
- ◎ This product is the above-mentioned vehicle exclusive goods. Is not possible attached to the other vehicle. Please note.

**⚠ Caution** When the handling of ignoring this display, property damage and human shows the assumption of what injury.

- When performing the work, etc., be sure during the cold (when the engine and the muffler is cold). (It may cause burns.)
- When performing the work, it should be made to prepare the tools for the job. (Breakage of parts, it may cause injury.)
- Do the work must always specified torque using a torque wrench. (Damage of bolts and nuts, and cause of dropout.)
- The product and the frame, might have edges or protrusions. Please go to protect your hands when you work. (It may cause injury.)
- Be sure to each part inspection before operation, check the loosening of the threaded portion, be sure to securely tighten the specified torque if there is loose. (It may cause detachment of the parts.)

**⚠ Warning** When the handling of ignoring this display people died, shows the contents of the serious injury possibility is assumed.

- During operation, when an abnormality occurs, immediately stop the vehicle in a safe place, please stop running. (It may lead to an accident.)
- When performing the work, do the work safely stabilize the vehicle in a horizontal location. (There is a risk of injury vehicle collapsed while working.)
- Inspection, maintenance, the instruction manual or, inspection methods such as service manuals, to protect the way, should be done correctly. (unsuitable inspection and maintenance, there is a risk that result to an accident.)
- When carrying out the inspection and maintenance, etc., if found damaged parts, replace the damaged parts to avoid possible to reuse the parts. (There is a risk that lead to accidents Continued use.)
- Plastic bags of product packaging, you can either be stored in a place that is out of reach of children, it should be discarded. (When the children or wearing, there is a risk of suffocation.)

◎ Please note. Performance up, the design change, the product and the price in the cost up, etc. are subject to change without notice.

◎ Keep this manual stored until this product is discarded.

## Product content



No.	Product content	Qty
1	Large-diameter air duct	1

■ Mounting procedure ※ Please refer to the genuine service manual if the detail is not mentioned method and the specified torque.

■ Introduction

Work in the horizontal and safe place, in course of maintenance stand, start then fully stabilized to vehicle.

⚠ Caution

Exterior parts removal work in this instruction manual, wrote only summary which is not details.

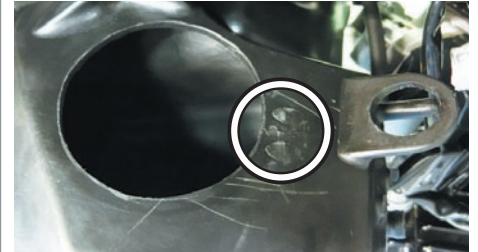
If unfamiliar with exterior removal work, and requests work shop or the like, or be sure to work according to manufacturer's operating procedures, tightening torque of genuine service manual instructions. Description of outer class, so as not to damage nails and groove, to carefully work.

Method of mounting large-diameter air duct

1. Remove shroud with refer to service manual. Remove connection of intake air temperature sensor coupler in case of GROM.

※ The figure below shows the work contents of GROM(JC61-1000001 ~ 12999999) and MSX125. For other vehicles please refer to the genuine service manual.

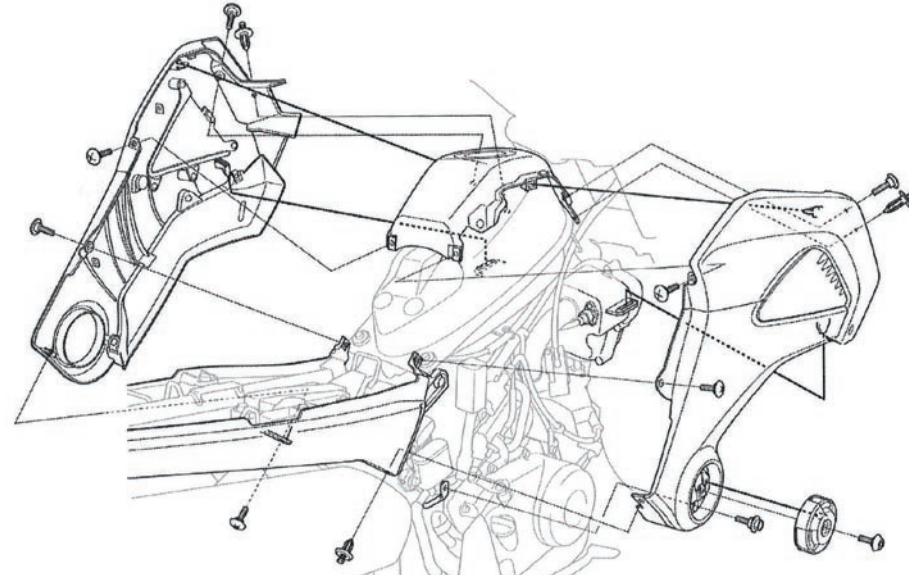
7. The positioning pins for genuine air cleaner duct resection with nippers, etc., please cleanly remove burrs.



8. Attach large-diameter air duct. Verify interference of each component, determine position.

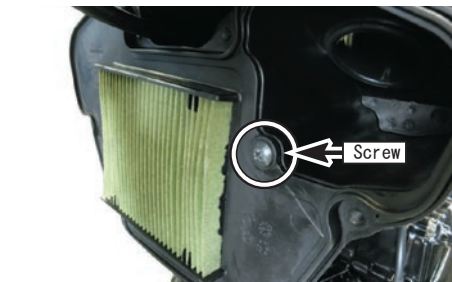


9. Mounting carried out at reverse order of removal.



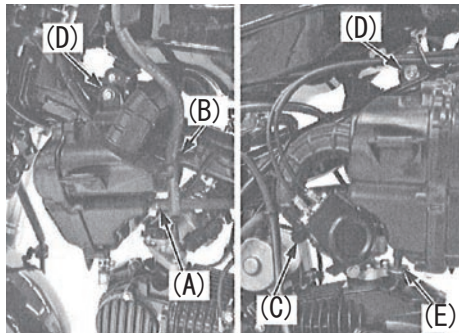
2. Disconnect the crank breather hose (A) and fuel breather hose (B). Loosen the connect hose band screw (C), and remove connection from throttle body of connect hose. Remove bolt (D), and remove tab (E) from air cleaner case bracket.

4. Screw, remove the genuine element.

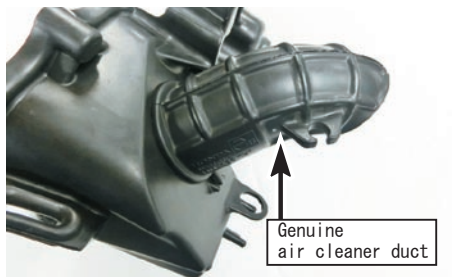


○ Open the inner circle of paper pattern, it is temporarily fixed with tape such as duct mounting holes in air cleaner case, marking outer circle (diameter 50mm) with a pen or a perforation or the like, expanding processing.

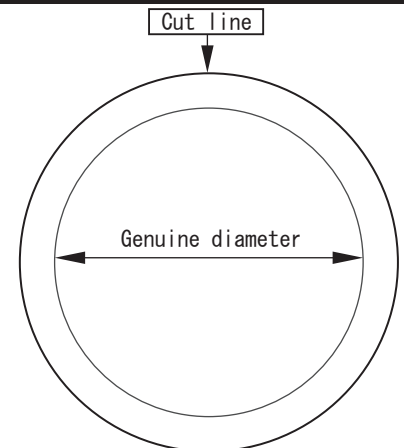
※ Please careful attention to sharpener too.



5. Remove genuine air cleaner duct.



Paper pattern (actual size)



3. Remove eight screws and remove the air cleaner case cover.



6. Sets the pattern that comes with air cleaner duct mounting holes, to expand processing. Please cleanly remove burrs.



■ About Settings

If genuine engine, simultaneous mounting of FI CON2 (injection controller) is not required.

You can use basically same air-fuel ratio setting even use with our e-Stage, S-Stage, Super head 4 V + R bore up kit with this larger air duct.