



# Instruction Manual for Pickup Coil Bracket

( for exclusive use with Super Head+R )

Item No. : 0 5 0 1 0 0 0 2  
Fits : YB1Four (5JE1)  
TT-R90 (5HN3)

- Thank you for purchasing one of our TAKEGAWA-made products. Please strictly follow the following instructions in installing and using the product.
- Before installing the product, please be sure to check the product contents. Should you have any questions about the product, please contact your local motorcycle dealer.

Read all instructions first before starting the installation.

## ! Cautions about CDI !

**With a stock CDI for YB1, the products cannot perform well. Therefore, please replace it with a genuine CDI for TT-R50E of YAMAHA's genuine part No. 1P6-H5540-00.**

This product alone does not give you the maxim performance. Be sure to use this product together with our TAKEGAWA's Super Head Kit. You cannot enjoy the best performance if this product is used together with a stock engine or S-Stage Kit.

We do not take any responsibility for any accident or damage whatsoever arising from the use of the product not in conformity with the instructions in this Instruction Manual.

We shall be held free from any responsibility or compensation whatsoever for any glitch in the parts other than ours if the glitch takes place after the installation and use of this product.

If you make modifications to any product supplied here, we shall be held free from any guarantee of the product.

You are requested not to contact us about the combination of our products with other manufacturers'.

Please note that this product is designed for exclusive use in the above-mentioned compatible models only and that it cannot be mounted on any other models.

When ordering repair parts, please refer to Item No. above. Should you have any questions about the product, please kindly contact your local motorcycle dealer.

Please do the installation securely referring to a YAMAHA's genuine service manual for the above-mentioned models. In addition, you need to prepare gaskets and packings suitable for the specifications of your vehicle.

**CAUTION** The following show the envisioned possibility of injuries to human bodies and property damage as a result of disregarding the following cautions.

- Work only when the engine and muffler are cool. (Otherwise, you will get burned.)
- Do the installation with right tools. (Otherwise, breakage of parts or injuries to you may take place.)
- Always use a torque wrench to screw bolts and nuts tight and securely to the specified torque. (Otherwise, these parts may get damaged or fall off.)
- As some products and frames have sharp edges or protruding portions, please work with your hands protected. (Otherwise, you will suffer injuries.)
- Before riding, always check every hardware like screws for slack. If you find slack ones, screw them securely up to the specified torque. (Otherwise, improper tightening may cause parts to come off.)
- Always use new gaskets and packings. And check those parts, to be reused, for wear and damage. If you find worn or damaged parts, replace them with new ones.

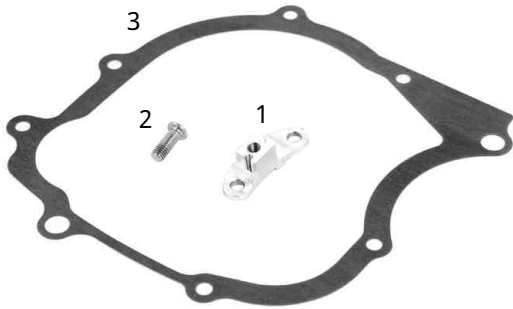
**WARNING** The following show the envisioned possibility of human death or serious injuries to human bodies as a result of disregarding the following warnings.

- Always start the engine in a well-ventilated place, and do not turn on the engine in an airtight place. (Otherwise, you will suffer from carbon monoxide poisoning.)
- When you notice something abnormal with your motorcycle while riding, immediately stop riding and park your motorcycle in a safe place. (Otherwise, the malfunction could lead to accidents.)
- Before doing work, make sure your motorcycle is secure on level ground for safety's sake. (Otherwise, your motorcycle could overturn and injure you while you are working.)
- Carry out inspection and maintenance of your motorcycle correctly according to the instructions and guidelines in the instruction and service manuals. (Improper inspection and maintenance could lead to accidents.)
- If you find damaged parts when inspecting or performing maintenance of your motorcycle, do not use these parts any longer, and replace them with new ones. (The continued use of these damaged parts as they are could lead to accidents.)
- Keep plastic bags for packing the products out of children's reach, or discard them. (If children get them on, there will be a danger of their suffocating.)
- As gasoline is highly flammable, never place it close to fire. Make sure that nothing flammable is near the gasoline. Since vaporized accumulation of gasoline is at high risk of explosion, work in a well-ventilated place. (Otherwise it may cause a fire.)

Please be informed that, mainly because of improvement in performance, design changes, and cost increase, the product specifications and prices are subject to change without prior notice.

This manual should be retained for future reference.

~ Kit includes: ~

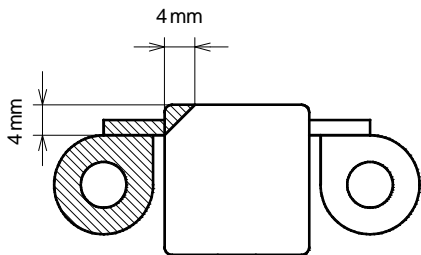


No.	Part Name	Qty	Repair Part Item No.	in packs of
1	Pickup coil bracket	1	_____	_____
2	Bolt	1	BW-00-0076	2
3	Gasket	1	000-13-087	1

Please order repair parts by indicating the Repair Part Item No. as listed above. As you see from the list, there is a part for which we are not in a position to accept your order in the quantity of one.

~ Installation Instructions ~

- 1 . Unfasten the drain bolt and drain the engine oil.
- 2 . Unfasten two bolts in order to detach a drive sprocket cover and shift pedal.
- 3 Remove the timing plug and crankshaft end cover on the left-side crankcase cover.
- 4 . Unfasten eight bolts to detach the left-side crankcase cover.
- 5 . Remove the gasket and knock pin. You will be reusing the knock pin.
- 6 . If the gaskets remain on the crankcase and left-side crankcase cover mating surface, remove them thoroughly with a scraper or a cutter knife.  
Be careful not to scratch these hardware.
- 7 . Unfasten two bolts to remove a pickup coil.  
Completely remove the thread lock cement if any remains in the threaded holes.
- 8 . Process the pickup coil.



Chip away the shaded area with a grinder.

Be careful not to chip the area too much, particularly the area in and around the portion where the lead wire is welded. Otherwise, the terminal will get exposed.

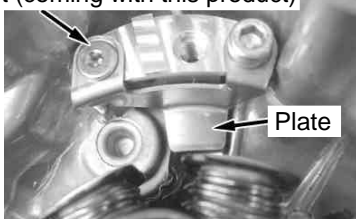
- 9 . Install the pickup coil bracket and plate.

**Torque: 10 N·m (1.0 kgf·m)**

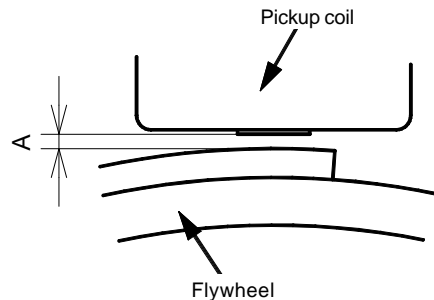
It is advisable to apply thread lock cement.

Pay heed to the kinds of bolts to install.

Bolt (coming with this product)



- 1 0 . Install the pickup coil.  
**Torque: 10 N·m (1.0 kgf·m)**  
It is advisable to apply thread lock cement.
- 1 1 . Install the knock pin and gasket.
- 1 2 . Install the left-side crankcase cover, and check through the timing plug that the opening of A as illustrated in the figure below is about 1 mm.



Please check the width of the opening A by putting a 1mm-wide wire through the opening A.

If the opening is too narrow or too wide, adjust the width of the opening by loosening the pickup-coil-bracket mounting bolt and pickup-coil mounting bolt. If the opening is still too narrow even after the adjustment, chip the pickup coil more.

- 1 3 . Install the left-side crankcase cover, and then eight bolts.  
**Torque: 10 N·m (1.0 kgf·m)**
- 1 4 . Install the timing plug and crankshaft end cover.
- 1 5 . Tighten the drain bolt.  
**Torque: 20 N·m (2.0 kgf·m)**
- 1 6 . Add engine oil, and check the level of the engine oil.  
Engine oil capacity: 0.8 liter  
Put the dipstick softly into the hole when checking the remaining oil level. Never force the dipstick into the hole.
- 1 7 . Install the dipstick.
- 1 8 . Install the drive sprocket cover.  
**Torque: 7 N·m (0.7 kgf·m)**
- 1 9 . Attach the shift pedal.  
**Torque: 18 N·m (1.8 kgf·m)**

**SPECIAL PARTS TAKEGAWA**  
3-5-16 Nishikiorihigashi Tondabayashi Osaka Japan  
TEL: 81-721-25-1357 FAX: 81-721-24-5059 URL: <http://www.takegawa.co.jp>