

FI CON TYPE-e Instruction manual

Product number 05-04-0111

Adaptation model Z125 PRO (BR125H-A02621 ~ A16470)

Thank you very much for purchasing our products.

Thank you so you will comply with the following matters at the time of use.

Before installation, please check your always kit contents.

If there is a point of notice event, Please contact us the dealer of purchase.

● If the description, such as photos or illustration different with this part.

■ feature

■ Can be attached to a genuine ECU with a couplar on.

■ Various 3D correction maps for our special engine parts are initially set and can be easily upload with personal computer or smartphone.
The built-in map can be finely adjusted for each opening throttle and engine speed.

■ Fuel control adjusting can be made while monitoring your PC or smartphone with bluetooth.

● Please read carefully before use

◎ The use of ignoring the instructions that are written in the instruction manual, if an accident or damage has occurred, we can not assume any responsibility for compensation.

◎ Even if parts other than this product are defective or damaged after installing and using this product, we will not be responsible for the warranty of parts other than this product.

◎ If it was the case or mounting that has been processed like a product, it will not be covered under warranty.

◎ It is not possible to inquire of the combination of other manufacturers.

◎ Product may have edges or protrusions. Be sure to wear working gloves.

(Please wear work gloves when working, even if a photo in this article show without work gloves.)

◎ We only check the operation of models that are officially sold as Japanese specifications. We do not know about the correspondence to parallel import cars.

◎ This product is the above-mentioned vehicle exclusive goods. Is not possible attached to the other vehicle. Please note.

◎ Repair parts should apply in repair part number. Addition, any questions, please contact us to purchase.

◎ During installation, it prepares the tool or the like, do the work with care in accordance with the mounting procedure.

In addition, this manual and Honda genuine service manual are intended for those who have a basic skills and knowledge.

If no experience of mounting, etc., who preparation of such a tool is insufficient, we recommend that it is your request to the shop with a technical credit.

◎ The computer or smartphone require the following conditions.

○ Windows (excludes RT/MOBILE) You must be connected to the Internet to install our software (free).

• Windows 11

It is possible to communicate with the Windows standard driver (stack) of Windows 11. (It can also be used with the built-in adapter.)

※ Be sure to use the Windows standard driver (stack). Connections with other stacks are not supported.

• Windows 10 (April 2018 Update (1803) or later)

" You can connect in the same way." ※ Limited to FI controllers compatible with Windows 11.

• Windows 7/8/10 (April 2018 Update (1803) or earlier)

Your computer must have built-in Bluetooth or a separate external Bluetooth adapter is required. Other than Windows standard Microsoft Bluetooth driver " Cannot connect."

※ Some of the previously sold FI Con TYPE-e and FI Con TYPE-X do not support Windows 11. Also, for Windows 10 (April 2018 Update (1803) or later) Communication cannot be performed with the Windows standard driver (stack), and a designated external Bluetooth adapter is required separately.

For details, please check our website.

[Reference] Windows 11 compatible lot confirmation method

FI controller TYPE-e and FI controller TYPE-X are laser marked so that the lot can be identified.

DG, DH, DI, DJ, DK, DL and notations with the first letter after E (in alphabetical order) are compatible with Windows 11.

○ iOS iPhone4s or later, iPad 3rd generation or later iOS9 or later.

Please get our application and purchase the data though AppStore.

You need to purchase various model data within the app.

○ Android Android OS 4.2.2 or later. Bluetooth function built.

You need to connect to Google play to install our app and purchase model data.

You need to purchase various model data within the app.

● Precautions on use purchased dealer.

◎ Not compatible parts

Never install an external H.I.D. kit, LED headlights or fog lamps made by other companies at the same time. Some ballasts/inverters (voltage converters) emit high voltage noise that adversely affects digital circuits, which can cause product failure or malfunction. Do not use an performance ignition device (ignition coil or plug wire) as it may cause malfunction or product failure due to increased radiation noise associated with increased ignition voltage. It is possible to use it with Takagawa's hyper ignition coil. Do not use other performance generator or similar products, it may cause a malfunction due to insufficient power generation or voltage waveform.

◎ This product is not waterproof / drip-proof. If rain or water is applied, water may enter the main unit and cause malfunctions.

Be careful when rain or washing. If water gets into the main unit, stop using it immediately.

◎ The outer case of this product is made of resin. To prevent deterioration, moto cover is ideal on the bike for a store or long time parking.

If left on under severe conditions such as in hot weather, deterioration or deformation of resin or rubber parts may be considered.

◎ Never disassemble or modify the products.

We will not accept inspections and repairs if you disassemble it.

◎ Please do not give a strong shock or transmit a strong impact. There is a risk of irreparable failure or damage to the main unit case due to internal parts falling off or breaking due to impact.

◎ If there is stubborn dirt, clean it slowly with a small amount of neutral detergent in water.

Do not use volatile substances (such as thinner or alcohol) or compounds may cause deterioration of the resin part or cloud the panel.

⚠ Caution When the handling of ignoring this display, property damage and human shows the assumption of what injury.

■ When performing the work, etc., be sure during the cold (when the engine and the muffler is cold). (It may cause burns.)

■ When performing the work, it should be made to prepare the tools for the job. (Breakage of parts, it may cause injury.)

■ Do the work must always specified torque using a torque wrench. (Damage of bolts and nuts, and cause of dropout.)

■ The product and the frame, might have edges or protrusions. When working, please wear work gloves to protect your hands. (It may cause injury.)

■ Be sure to each part inspection before operation, check the loosening of the threaded portion, be sure to securely tighten the specified torque if there is loose. (It may cause detachment of the parts.)

SPECIAL PARTS
TAKEGAWA

CONTACT Address : 3-5-16 Nishikiorihigashi Tondabayashi Osaka JAPAN

TEL: +81-721-25-1357 FAX: +81-721-24-5059 e-mail: english@takegawa.co.jp URL: http://www.takegawa.co.jp

Please contact with your name and country name provided. (Only English please)

Warning When the handling of ignoring this display people died, shows the contents of the serious injury possibility is assumed.

- During operation, when an abnormality occurs, immediately stop the vehicle in a safe place, please stop running. (It may lead to an accident.)
- When performing the work, do the work safely stabilize the vehicle in a horizontal location.
(There is a risk of injury vehicle collapsed while working.)
- Inspection, maintenance, the instruction manual or, inspection methods such as service manuals, to protect the way, should be done correctly. (unsuitable inspection and maintenance, there is a risk that result to an accident.)
- When carrying out the inspection and maintenance, etc., if found damaged parts, replace the damaged parts to avoid possible to reuse the parts. (There is a risk that lead to accidents Continued use.)
- Plastic bags of product packaging, you can either be stored in a place that is out of reach of children, it should be discarded.
(When the children or wearing, there is a risk of suffocation.)

- ◎ Please note. Performance up, the design change, the product and the price in the cost up, etc. are subject to change without notice.
- ◎ Please be informed that we shall be held harmless against any claim against us whatsoever arising out of use of the products in racing and the like.
- ◎ Keep this manual stored until this product is discarded.

Product content



Number	Product content	Quantity	Item Number
1	FI CON TYPE-e	1	_____
2	Cable tie, 150mm	3	00-00-0135 (10 pcs)
3	Cushion 2	1	00-00-0299

※ Please order in the repair parts are always repair part number.
If it is not the part number order, you may not be able to order. Please be forewarned.

It should be noted, In the case of parts that can not be separately shipment, please order a set part number.

※ Repair parts may differ slightly from the kit contents in terms of shape, etc. There is no problem to use it.
Please be forewarned.

- Mounting procedure ※ Please refer to the Genuine Service Manual for detailed mounting methods and specified torques that are not specifically described.

■ List of FI CON TYPE-e function

• Preset MAP

You can select 8 preset fuel adjustment maps that have been set according to the engine specifications. You can easily change the settings using your PC or smartphone.

• Fuel injection duration adjustment

It can be adjusted between a maximum increase value of 5000 μ s and a maximum decrease value of 7500 μ s on each 500rpm engine speed and every 5% throttle opening angle.

• Simultaneous monitor with engine temperature display function

The dedicated software for PC or smartphone has a simultaneous monitor function In addition to the tachometer screen and throttle opening graph screen that are very convenient for setting, the fuel injection rate of the engine temperature injector is also digitally displayed.

• Real search function

Connect to a PC or smartphone with the engine started. Information of the running engine is reflected on the screen of the computer or smartphone at the same time. The reading speed / throttle opening is reflected in the mass of the fuel map graph, and that high-lighted to make the adjustment point clear and very convenient for setting.

• Rev limit function

You can set the Maximum engine speed. It's other than that limiter-cut, it can be set even at low speed. It can be used effectively when you don't want to increase the engine speed, such as tuning engine rev measures and break-in.

• Pit lane limiter function

In addition to the above rev limit function, if you do not want to increase the engine speed such as pit lane speed regulation etc., the limiter can be operated only when the "ON" by connecting the additional bottom switch (to the white lead in the spiral tube of the main unit and grounding the body)

※ Please provide extending wire to the switch.

• Tachometer output lead wire.

1 revolution, 1 pulse, 5 volts is output in purple lead wire in the spiral tube of the main unit.

※ When installing, the bracket harness needs to be modified.

• Digital acceleration pump

This product monitoring the speed of the accelerator opening by TPS signal. When the rider wants quick acceleration and the throttle is opened quickly, injection asynchronously the increase injection other than that set value. The similar function as the acceleration pump of the racing carburetor.

Warning

As a rule, settings should be made in a factory equipped with a chassis dynamometer O₂ sensor. Never setting with your smartphone while you riding.

■ Mounting procedure ※ Please refer to the Genuine Service Manual for detailed mounting methods and specified torques that are not specifically described.

■ Introduction

This product is developed on the assumption that the genuine DFI system is operating without any problems.

If there is a problem or malfunction in the DFI system itself, it may not operate properly or perform properly even if this product is installed, and it may cause other parts to malfunction, including this product. Make sure that there is no problem with the DFI system before installing and using it.

In addition, work by using a maintenance stand like a horizontal a safe place, start then fully stabilized to the vehicle.

▲ NOTE : The contents of the exterior parts removal work in this manual are only an overview with details omitted. If you are unfamiliar with the exterior removal work, please take to motorcycle shop to do the work. Be sure to follow the instructions and procedure specified torque follow the manufacturer's genuine service manual. Also be careful to not damaged any parts when the exterior is removed.

○ If the engine warning light (on the meter) is flashing, there is a problem with the DFI system and not working properly, so please follow the service manual to search the problem. Please solve it and clear the service code.

▲ NOTE : Be sure to perform the work before installing this product. If you work with this product installed, it may not work as described, and it may adversely affect both the ECU and FI controller.

■ Clear service code

• Delete the service code recorded in the ECU's memory using one of the methods A to C below.

A. Using the Kawasaki trouble diagnosis system at a Kawasaki motorcycle dealer.

B. Erase using DDCS made DILTS JAPAN.

C. Please refer to the service manual and erase using the following steps.

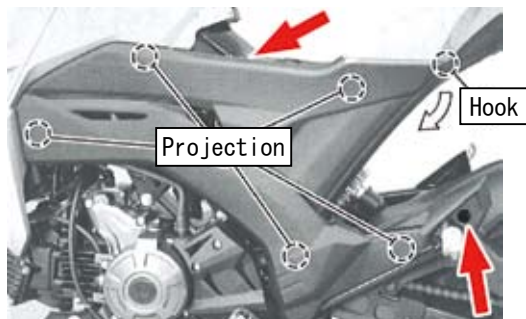
- ① Turn the ignition switch ON and start the engine.
 - ② Maintain the idling speed for more than 30 seconds
 - ③ Run the vehicle for at least 5 minutes at a speed of 40km/h or higher.
 - ④ Follow steps ① to ③ above to run the engine for total more than 10 minutes.
 - ⑤ Turn OFF the ignition.
- Repeat the above steps 3 times to start the engine and make sure the engine warning light is off.

※ When using our speed sensor kit (05-06-0019), you can perform the above steps referring to the instruction manual.

▲ Warning : Please be sure to perform the above procedure on a free roller etc. and do not perform it on a public road.

■ Removal of exterior parts and others

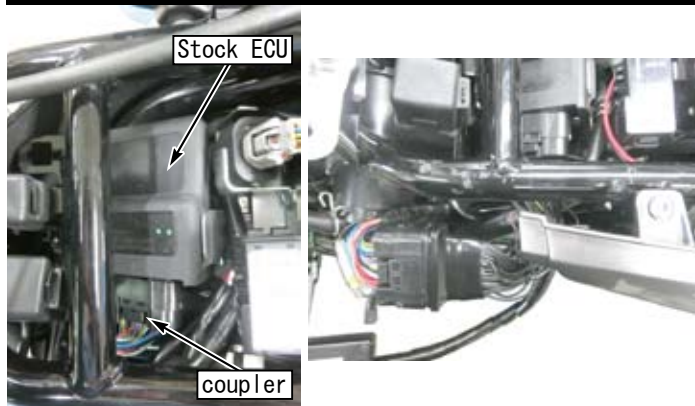
- Turn off the ignition switch.
- Remove the seat and side / frame cover referring to the Kawasaki genuine manual.
Remove the screws and bolts as indicated by the arrows.
Remove the hook at the rear end of the side / frame cover and the projections (5 places) on the back and remove it from the vehicle body.



- Remove the coupler of the stock ECU unit and attach the FI controller TYPE-e.

▲ NOTE : o not turn on the ignition while working .if the turned on during work, the engine warning light will light up. Be sure to attach FI con TYPE-e before turning on the ignition key.

※ If the engine warning light comes on, refer to the genuine manual to reset or consult your dealer.



- Use the attached cushions and zip-ties as appropriate with reference to the image and place the FI con TYPE-e body.

※ Caution: the case will be distorted if it interferes strongly with other parts when mounting the main body, as the inside will be damaged



- Install the side / frame cover and seat in reverse order.

■ Mounting procedure ※ Please refer to the Genuine Service Manual for detailed mounting methods and specified torques that are not specifically described.

■ How to use FI CON TYPE-e



※ Please download the smartphone app from our website.

※ You can download PDF file manual.

• Software for operating FI CON TYPE-e on a PC can be downloaded from our website(free) (<http://www.takegawa.co.jp>).



• You can download the app for operating FI CON TYPE-e on your smartphone from our website (<http://www.takegawa.co.jp>) (In-App Purchases)

※ App download links to external site.



Android
ios

This software and the application correspond to English display. Please set the language setting of your computer, Android, iOS terminal to English.

■ Mounting procedure ※Please refer to the Genuine Service Manual for detailed mounting methods and specified torques that are not specifically described.

Information on the require operating system is available on our website.

http://www.takegawa.co.jp/user_data/fi_con.php#ficon_e



- Download the FI CON-TYPE-e app, open the app and tap 「Other」 → 「Select model」 at the bottom of the screen to select the desired model.
- ※ Model selection will be charged.No refund will be given if you purchase wrong model.



■Bluetooth settings on a PC

- Explains how to communicate with FI computer TYPE-e with Bluetooth.

※When using a PC without Bluetooth function, you need to purchase and add Bluetooth adapter, however some adapters cannot be connected to FI TYPE-e, please check before you buy it.

※The screen may vary depending on the type of OS.

Fully open the throttle and turn on the main switch. (Be sure blue tooth is working condition.)

To check the connection between the FI controller TYPE-e and the application is established properly, start the engine and the engine warning light on the meter flashes.

※Since FI CON TYPE-e exchanges data wireless, it comes with a safety device that can communicate by emitting radio waves only when 「turn on the key with the throttle fully open」 so that other people can not access it.

When starting with normal key ON, no third party can access FI CON TYPE-e because it does not emit radio waves.

(The motorcycle's PGM-FI warning light flashes only when emitting radio waves.)

In addition, during communication, you can only connect to 「one unit」, so you cannot connect from another PC or smartphone when communicating.

If you change the data, you can use it with confidence because it will not emit radio waves once the key is turned off.

Select the Bluetooth device from the control panel.



Select to display the screen for the left photo.

※If there is already some Bluetooth registration, it will be displayed on the screen.



When the wizard screen opens, select 「Completion of setup and device can be found」 and press the Next button.

Continued on next page

■ Mounting procedure ※ Please refer to the Genuine Service Manual for detailed mounting methods and specified torques that are not specifically described.

■ Continuation of Bluetooth settings on a PC

When a new FI CON TYPE-e device is found, select it and press Next.
 ※ If you have multiple Bluetooth devices set up or there are them nearby, they will be searched together when searching, so multiple devices will be displayed on the screen. Be sure to select FI CON TYPE-e.



Add Bluetooth Device Wizard screen will open.
 Select 「Use passkey specified in manual」.
 An input space will appear on the right side of the screen.
 Enter 「1234」 and press Next



When the device is added, the following screen will be displayed.
 Note 「Outgoing COM Port」 on the screen.
 Ex: 「COM11」 Press to Done.



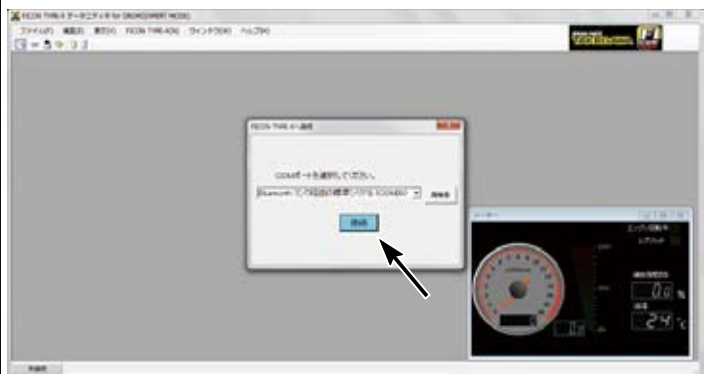
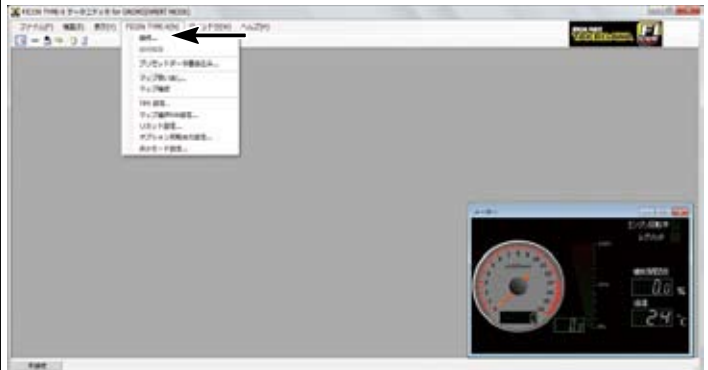
When completed, the following screen appears.
 Press 「COM Port」 on the upper tag button to check the outgoing COM port.
 Note of it.



This completes the Bluetooth settings.

■ Check the software startup and Bluetooth function

Launch the software and select 「Connect」 from 「FI CON TYPE-e」 on the screen.
 If the previous 「COM port」 is not selected, select it from the pull-down box and press 「Connect」.
 When communication starts, the real search function works and the opening angle is displayed when the throttle is moved even the engine is not started.



- ※ Tachometer and other functions will start when the engine is started.
- ※ Once disconnected, you can connect from another PC or smartphone.
- ※ From the next time, if the engine is started with the key on and throttle is fully open, its possible to connect even after starting engine.
- ※ If the connection is canceled unexpectedly due to radio interference, turn off the key once and start from the beginning. (Because the security function of FI CON TYPE-e may not be able to reconnect)
- ※ Please be careful at your own risk when connecting and rewriting data while the engine is running.
- ※ When using an external Bluetooth adapter attached to a USB connector on a PC with no built-in Bluetooth, it works only with the Windows standard Bluetooth driver.

Some bluetooth adaptor cannot be used, they operate with different drivers.

If you are using a USB Bluetooth adapter, please use the Bluetooth device and Bluetooth driver on the standard Windows control panel. Do not use driver software supplied from the manufacturer.

- ※ If you are using Windows VISTA, be sure to update to SP2 (Service Pack2).
- ※ There is no direct data link function between smartphone and PC. When exchange data, please go through FI CON TYPE-e.
- ※ There is a limit to the number of partners (Android devices or PCs) that can be paired in total due to the specifications of the Bluetooth adapter. Bluetooth communication will not be connect if the number of pairing is exceeded. The communication is not possible even pairing may appear to have been possible. When shipped from factory, it can be paired with 8-9 units. If you are unable to communicate via Bluetooth, please contact us for refresh the product. (apply fee)

■ Mounting procedure ※ Please refer to the Genuine Service Manual for detailed mounting methods and specified torques that are not specifically described.

■ Bluetooth settings on an Android smartphone.

Install the operation app on your smartphone from GooglePlay.

Device settings for Android smartphones are performed in the following order:



NOTE

The display may vary depending on the device and version. Please refer with the instruction manual of your device. Requires Android version 2.3 or higher. Please purchase after confirming that your Android device is compatible. Android devices that do not have a built-in Bluetooth cannot be connected. When connecting for the first time during pairing and after pairing, keep the distance from FI CON TYPE-e within 30 cm. If many errors occur during device search, pairing or normal connection, turning WiFi off once or reinstalling the application may be solved.

Information on the require operating system is available on our website.

http://www.takegawa.co.jp/user_data/fi_con.php#ficon_e



■ Blue tooth pairing

With the throttle fully open, turn on the key.



Select the settings on the main screen of the smartphone and chose 「Wireless & Network」.

※The title may differ depending on the model and manufacturer.
Example: Wireless and network



Select Bluetooth.



Enter Bluetooth settings.



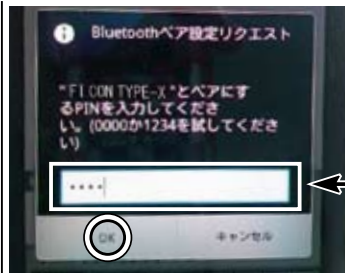
Select 「FI CON TYPE-e Pair this device」 as displayed.

※If the device is not displayed, please scan the device or check Bluetooth again.

※Although this photo is displayed as FI CON TYPE-X in the image, it will be displayed as FI CON TYPE-e.



Selecting a Bluetooth pair request and enter a 「PIN」.



Enter the number specified in (xxxx) and press OK.

Enter the number 「1234」



Press the 「FI CON TYPE-e」 icon on the main screen of the smartphone to launch the app.



The main page is displayed.

※When communication starts, the tachometer changed bright white and you can start engine.
※If you twist the throttle without starting the engine, the TPS monitor (next to the tachometer) will act and you can check the connection status.
※When connecting for the first time during pairing and after pairing, keep the distance from FI CON TYPE-e within 30 cm.
※Once disconnected, you can connect from another PC or other smartphone.
※If you are unable to connect to FI CON TYPE-e, exit the app once, cancel the pairing, restart the main unit and pair again to connect.
※There is no direct data link function between smartphone and PC. When exchanging data, please go through FI CON TYPE-e.
※There is a limit to the number of partners (Android devices or PCs) that can be paired in total due to the specifications of the Bluetooth adapter.
Bluetooth communication is not possible when the number of pairing is exceeded.
The communication is not possible even pairing may appear to have been possible. When shipped from factory, it can be paired with 8-9 units. If you are unable to communicate via Bluetooth, please contact us for refresh the product. (apply fee)

■ Bluetooth settings on an iOS smartphone.

Install the operation app on your smartphone from App Store.

NOTE The display may vary depending on the device and version. Please refer with the instruction manual of your device. Compatible with iOS6.0.1 or higher. iPhone 4s and earlier models, iPad 3rd generation and earlier models can NOT connect even if the OS is upgraded, because they don't support Bluetooth LE. Please purchase after confirming that your iPhone device is compatible. When connecting for the first time during pairing and after pairing, keep the distance from FI CON TYPE-e within 30 cm. If many errors occur during device search, pairing or normal connection, turning WiFi off once or reinstalling the application may be solved.

Information on the require operating system is available on our website.

http://www.takegawa.co.jp/user_data/fi_con.php#ficon_e



■ Blue tooth pairing

With the throttle fully open, turn on the key.



Turn on Bluetooth (If Bluetooth is already turned on, skip step).



← Select Bluetooth.



← 「ON」
Turn 「ON」 Bluetooth.



※If you turn 「ON」 Bluetooth, do not tap it even if it appears on the device at the bottom of the screen.



■ Connection with FI CON-TYPE-e
With the throttle fully open, turn on the main switch and check that the PGM-FI warning light is flashing.

Press the 「FI CON TYPE-e」 icon on the main screen of the smartphone to launch the app.



Select the center icon 「Operation status」 at the bottom of the main screen.



← Tap.

Tap the above arrow next to 「Driving Status」.



← Tap.

Tap to display the selection menu. Tap Connect to FI CON.



Tap to display the selection menu. Tap the detected FI CON TYPE-e.



← Tap.

※Although photo displayed as FI CON TYPE-X in the image, it is displayed as FI CON TYPE-e



If nothing is displayed If you are not sure that the vehicle's PGM-FI warning light is flashing, turn off the main switch, fully open the throttle and turn on the main switch.

When connection is completed, TPS (throttle opening) and oil temperature are displayed on the operation status screen. The engine speed is also displayed when the engine is started.

To disconnect FI CON TYPE-e, tap FI CON disconnection from the menu button on the operation status screen.

※Tachometer and other functions will activate when the engine is started.

※Please be careful at your own risk when connecting and rewriting data while the engine is running.

※There is no direct data link function between smartphone and PC. When migrating data, please go through FI CON TYPE-e.

※If you are unable to connect to FI CON, exit the application, turn off the power of the main unit, restart and reconnect.

How to correct the throttle position sensor (TPS) error and synchronize with FI controller.

※ The following FI CON represents “FI CON TYPE-e” and “FI CON TYPE-X”. ※ TPS = Throttle position sensor

FI CON reads engine speed / TPS values and signal speed from various sensors. However, the output signal from the TPS of vehicle is slightly different for each motorcycle. (There are individual differences in signals when fully closed or fully open.) In this case, even if you try to adjust the fuel in response to TPS, depending on the individual motorcycle, for example, it may be full open, but read a different point from the full open signal, etc.

Therefore, when connecting to a PC (or smartphone), correct the actual throttle position 0% to 100% so that the output voltage is synchronized with the throttle position data of the FI controller. With this function, the data created on the software is fully reflected in the actual bike. The TPS value to be corrected is stored in the FI CON main unit, so it can be done once with either a PC or smartphone. (Adjust the values when fully closed and fully open)

When there is a problem with the wiring connection, the check function of this software will give you warning. See below for details.

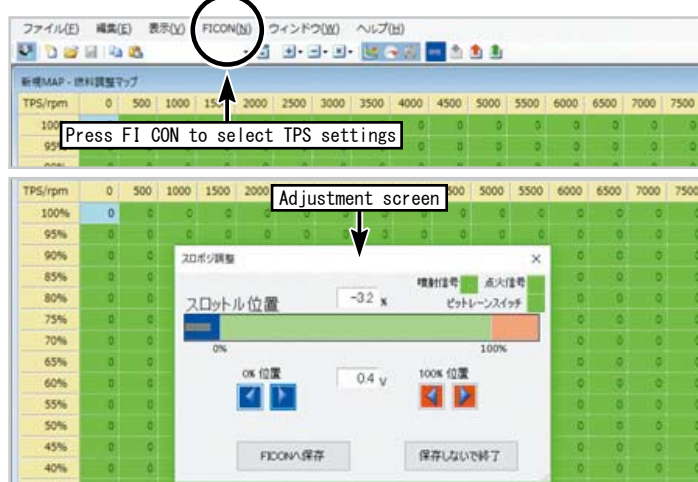


NOTE Do not start engine while in the TPS error correction, because throttle must be fully opened (only the key is on). It is dangerous to work with the engine started. Please note. (please refer the section for “how to connect via Bluetooth”)

■ TPS error correction on PC

Start the PC with the FI CON installed, start up the software, and connect the PC and FI CON.

Next, press FI CON at the top of the software and select 「TPS setting」 at the bottom of the displayed. The adjustment screen is displayed when the PC and FI computer are connected (picture below). If the computer and FI computer are not connected, the connection screen is displayed.



While looking at the throttle position graph on the screen, try to fully close to open the throttle. The gray highlight moves to the left and right in conjunction with opening and closing the slot. Adjust the level adjustment switch so that the values match at the 0% and 100% positions. Finally, be sure to press the “Save to FI CON” button. It will not be reflected unless saved.

Throttle position graph



NOTE After adjustment, be sure to click the “Save to FICON” button. It will not be reflected unless saved.



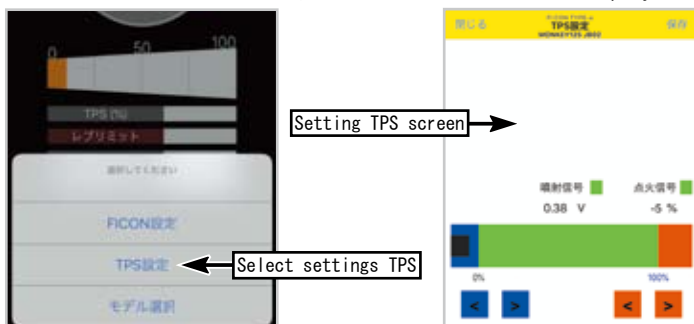
Important Note If the FI CON is not wired correctly, the following screen will appear and software will warn.



■ TPS error correction on smartphones (example: iOS)

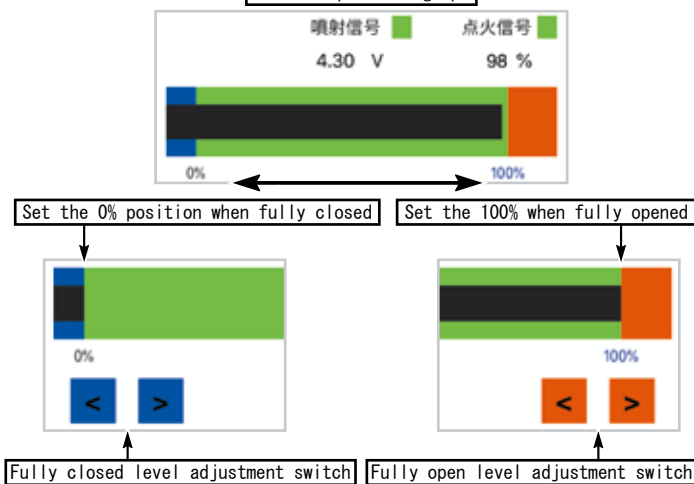
Open the app from a smartphone with the FI CON installed and connect the PC and FI CON.

Select “Setting TPS” (bottom right of the app.) When the smartphone and FI CON are connected, the 「TPS settings」 screen will be displayed. (see bottom left photo) If the smartphone and FI CON are not connected, the connection screen is displayed.



Try to fully close to fully open the throttle while watching the throttle position graph on the screen. The highlighted black moves from side to side in conjunction with opening and closing of the slot. Adjust each value with the level adjustment switch as match at the 0% and 100% positions. Please press “Save” when you done. It will not be reflected unless saved.

Throttle position graph



NOTE Please press the “Save” button (on the upper right.) when you done. It will not be reflected unless saved.

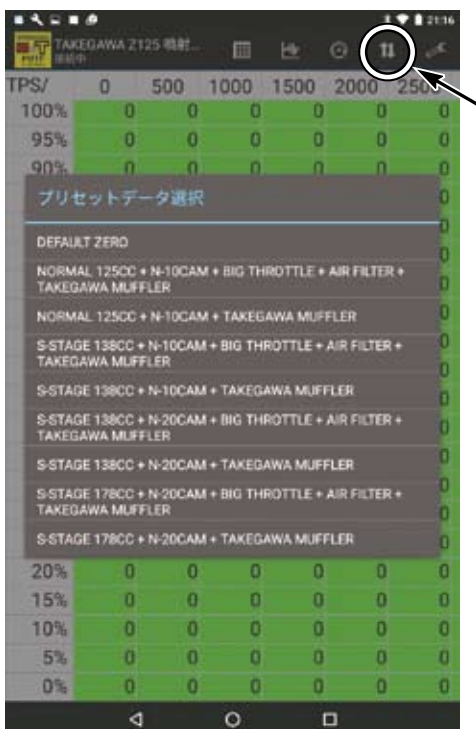
Important Note If FI CON is not wired correctly, app will warn you the screen below displayed.



■ Mounting procedure ※ Please refer to the Genuine Service Manual for detailed mounting methods and specified torques that are not specifically described.

● Android

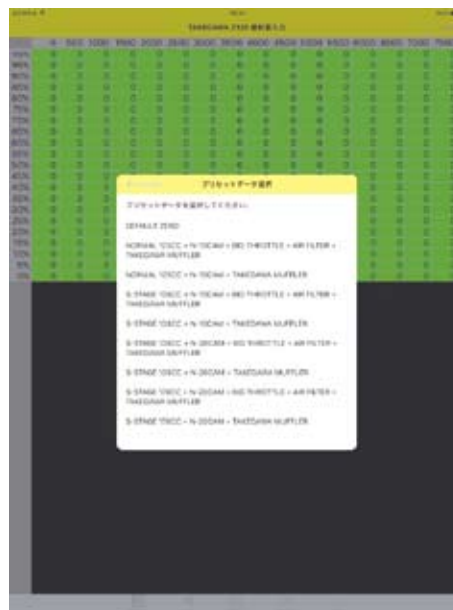
- Tap the ↑↓ icon at the top right of the screen and select 「Load new preset map」.
- The preset data selection screen is displayed. Select the MAP by referring to the MAP selection table by engine specification.



- When creating a new MAP, select 「DEFAULT ZERO」 on the preset data selection screen.
- ※ 「DEFAULT ZERO」 will not change the injection time of the stock ECU.
- ※ The display screen may slightly different depending on the model.

● iOS

- Select 「Create New Map」 from the menu button (in the upper right of the screen).
- The preset data selection screen is displayed. Select the MAP by referring to the MAP selection table by engine specification.



- MAP を新規で作成する場合、プリセットデータ選択画面で「DEFAULT ZERO」を選択して下さい。
- ※ 「DEFAULT ZERO」はノーマル ECU の噴射時間に一切変更を加えていない状態になります
- ※ ご使用の機種により表示画面が若干異なる場合があります。

⚠ Note Before riding, please check each part for any looseness in the screws, etc. If there is any looseness, make sure to retighten with the specified torque. (It may cause parts to fall off.)

⚠ Warning Make sure that the engine is started in a well-ventilated place. Do not start the engine in a closed place. (Avoid a risk of carbon monoxide poisoning.)

■ MAP selection table by engine specification

The following setting table is when all our parts are installed. Please note that this is a setting that has been tested at our company, so it may not always be the best setting due to external factors such as individual vehicle, outside air temperature, altitude, rider weight.

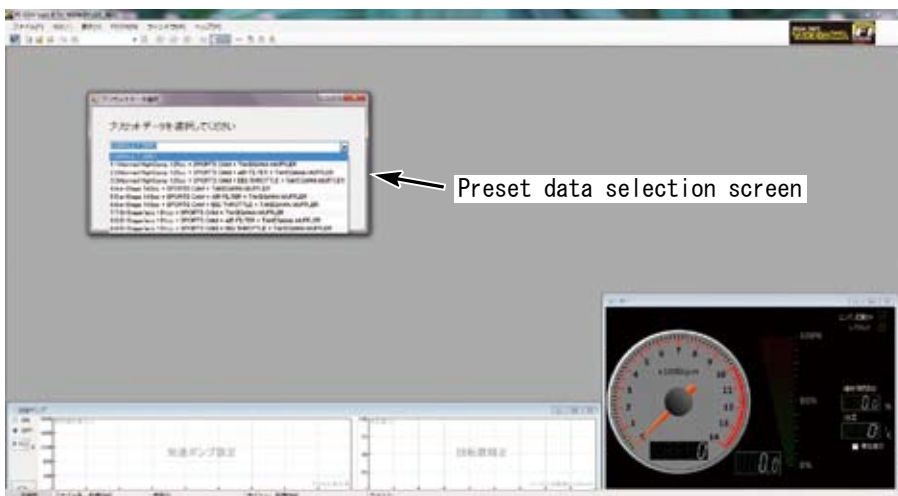
FI CON TYPE-e MAP sheet

	MAP name	Engine specifications
1	NORMAL 125CC + N-10 CAM + TAKEGAWA MUFFLER	Normal displacement (Normal piston・HighComp piston) + 10-10 Cam + Normal Throttle + Normal Air filter + BOMBER Muffler
2	NORMAL 125CC + N-10 CAM + BIG THROTTLE + AIR FILTER + TAKEGAWA MUFFLER	Normal displacement (Normal piston・HighComp piston) + 10-10 Cam + ϕ 34 Throttle + Air filter + BOMBER Muffler
3	S-STAGE 138CC + N-10 CAM + TAKEGAWA MUFFLER	S-Stage 138cc + 10-10 Cam + Normal Throttle + Normal Air cleaner + BOMBER MUFFLER
4	S-STAGE 138CC + N-10 CAM + BIG THROTTLE + AIR FILTER + TAKEGAWA MUFFLER	S-Stage 138cc + 10-10 Cam + ϕ 34 Throttle + Air filter + BOMBER Muffler
5	S-STAGE 138CC + N-20 CAM + TAKEGAWA MUFFLER	S-Stage 138cc + 20-20 Cam + Normal Throttle + Normal Air cleaner + BOMBER Muffler
6	S-STAGE 138CC + N-20 CAM + BIG THROTTLE + AIR FILTER + TAKEGAWA MUFFLER	S-Stage 138cc + 20-20 Cam + ϕ 34 Throttle + Air filter + BOMBER Muffler
7	S-STAGE 178CC + N-20 CAM + TAKEGAWA MUFFLER	S-Stage 178cc + 20-20 Cam + Normal Throttle + Normal Air cleaner + BOMBER Muffler
8	S-STAGE 178CC + N-20 CAM + BIG THROTTLE + AIR FILTER + TAKEGAWA MUFFLER	S-Stage 178cc + 20-20 Cam + ϕ 34 Throttle + Air filter + BOMBER Muffler

■ Mounting procedure ※ Please refer to the Genuine Service Manual for detailed mounting methods and specified torques that are not specifically described.

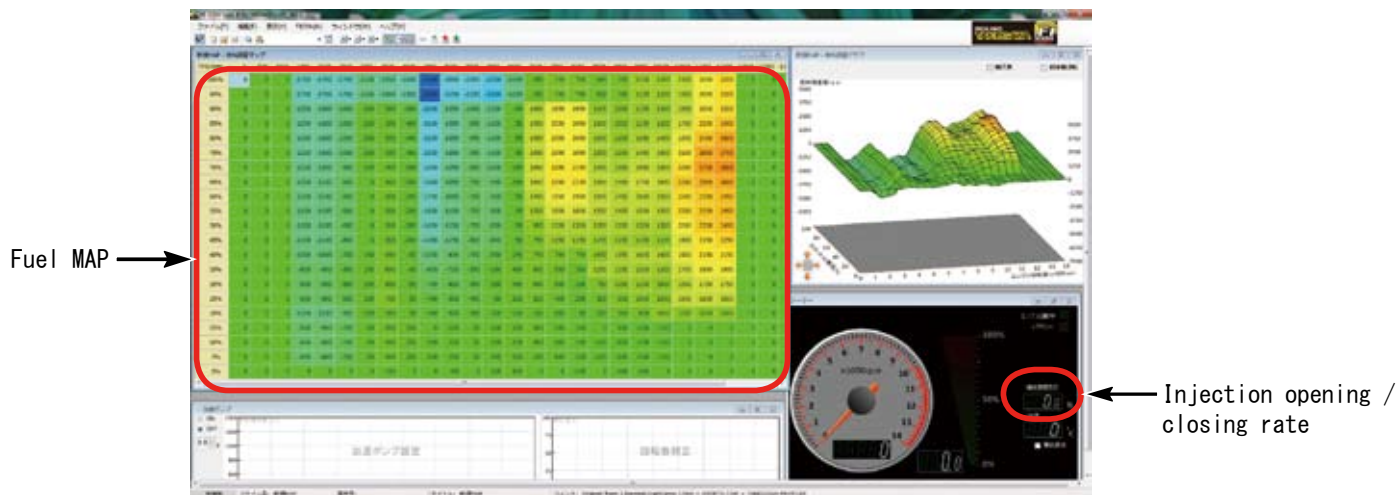
■ Select preset data

- PC
- Select 「New」 from 「Menu」 (at the top left of the screen)
- The preset data selection screen is displayed. Select the MAP by referring to the MAP selection table by engine specification.



- When creating a new MAP, select 「DEFAULT ZERO」 on the preset data selection screen.
- ※ 「DEFAULT ZERO」 will not change the injection time of the stock ECU.

■ FI CON TYPE-e operation



- Fuel MAP
FI CON TYPE-e can be adjusted between a maximum increase value of 5000 μ s and a maximum decrease value of 7500 μ s.
- Injection opening / closing rate
Shows the rate of injector operating time in one revolution.
We recommend the upper limit is 95%. 96% or more will cause the injector failed.

■ Mounting procedure ※ Please refer to the Genuine Service Manual for detailed mounting methods and specified torques that are not specifically described.

■ Create new data

Fuel adjustment Set the MAP acceleration pump. Read and operate correctly when setting as necessary.

⚠ Warning

Various settings needs higher knowledge, for expert use only. If you have any problem or question about the contents, please do not work on your own, consult a dealer with skilled mechanics.

Basically, setting should be done in a factory equipped with a chassis dyno-meter and O₂ sensor.

Never perform setting with your smartphone while driving. It is very dangerous.

● PC

Introducing the necessary functions for setting. Please note that some items may not exist due to the MAP being created.

Some menus will not appear if Edit MAP is not selected. The menu that appears depends on the type of MAP you are editing.

File

Select the [File] switch (at the left end of the upper row) to display the following items.

New

Used when creating a new MAP from 0.

Open

Select the files created and saved in the past.

Data information

Displays information about the MAP you are currently viewing and editing.

There is also a memo function.

Save

Overwrite and saves the currently displayed MAP.

Save As

Save the currently displayed and edited MAP with a different name.

Close

Close only fuel MAP.

Recently used maps

Display recently used (edited) MAP.

Exit

Exit FI Con TYPE-e software.

Edit

When you select [Edit] (second switch from the left) the following items appear.

Undo

Undo what you just edited (up to 10 processes).

Redo

If the [Undo] function returns too much, one step will be taken.

Copy

Left button and drag with cursor to copy specified range.

Paste

Paste the copied part.

Setting value

Recalls the value entered arbitrarily in the specified value input area at the top of the screen. (Multiple registration possible)

Increase

Increase the value of the dragged part with the right button.

Decrease

Decrease the value of the dragged part with the right button.

Magnification

Increase or decrease the numerical value of the dragged and right button according to the magnification

※ Highlighted by left mouse button and use the the [right button] to function quickly.

View

When you select the [view] switch (3rd from the left), the following items appear.

Graph

When unchecked, the 3D graph on the right is not displayed.

Meter

When the check is removed, the 3D tachometer / TPS meter at the lower right is not displayed.

acceleration pump

If the check is removed, the lower acceleration pump graph will not be displayed.

FI CON TYPE-e

When you select [FI CON TYPE-e] (4th switch from the left), the following items appear.

Connection

Used when connecting to FI Con TYPE-e with key ON.

Disconnect

Used when disconnecting.

Recall

While connected to FI Con TYPE-e, the data inside FI Con TYPE-e is extracted.

Write

Transfer (write) edited MAP etc. to FI Con TYPE-e and reflect it.

Check

Check if the MAP currently displayed is the same as the MAP in FI TYPE-e.

Rev limit setting

Enter the rev limit speed to prevent further rotation.

Also set the limiter cut function / Pit lane limiter function.

TPS setting

Set to synchronize the TPS output value with FI Con TYPE-e.

Window

When you select [Window] (5th switch from the left), the following items appear.

Screen layout initialization

If you changed the size or position of the MAP or meter on the screen, restore it.

New map- Fuel adjustment map

If you have stacked the screen, the checked item will come to the top.

Meter

If you have stacked the screen, the checked item will come to the top.

New map- Fuel adjustment graph

If you have stacked the screen, the checked item will come to the top.

New acceleration pump-acceleration pump

If you have stacked the screen, the checked item will come to the top.

Help

Select the [Help] switch (on the right to display) to show the following items.

Version information

Product and version information.

■ Mounting procedure ※ Please refer to the Genuine Service Manual for detailed mounting methods and specified torques that are not specifically described.

■ Edit fuel adjustment map

Setting with a PC

● When setting based on the currently used map

Launch PC software and connect to FI CON TYPE-e.

Select 「FI CON TYPE-e」 → 「Call」 (in the upper menu) display the current injection map.

※ Editing data will be discarded.

Modify the map if necessary. Upload to FI CON when you are done.

Select 「FI CON TYPE-e」 → 「Write」 in the upper menu to up load.

※ If you do not write to FI CON TYPE-e, the number will not be reflected.

● How to start setting based on the main injection MAP of preset data

Select preset data from the top menu 「File」 → 「New」.

※ Editing data will be discarded.

※ When 「DEFAULT ZERO」 is selected, all settings will be default values (genuine maps).

Select the base MAP and modify it if necessary.

When setting is completed, select 「FI CON TYPE-e」 → 「Write」 in the upper menu and write.

※ If you do not write to FI CON TYPE-e, the number will not be reflected.



3D fuel map

You can change the size by grabbing the window frame.
Drag the graph to move it in three dimensions.

Engine tachometer

Throttle opening position meter
Injector open / close rate display
Engine temperature(oil temperature gauge)

Select the desired range with the cursor and right click to select the increase / decrease ratio and change the value.

Or enter the value directly by double-click.

Adjustable between maximum increase value 5000 μ s to maximum decrease value -7500 μ s.

Check the 「injection opening / closing rate」 displayed on the meter of the operation software or operation application, and do not to exceed 95% even at high rotations.

How to set with a iOS

● When start to setting based on the currently used map data

Tap 「Input injection amount」 (at the bottom of the screen) and tap the menu button (in the upper right).

Tap 「read from FI CON」, connect to FI CON TYPE-e, open the map, tap 「Edit」 in the upper right, and tap the part that needs to be edited on the map

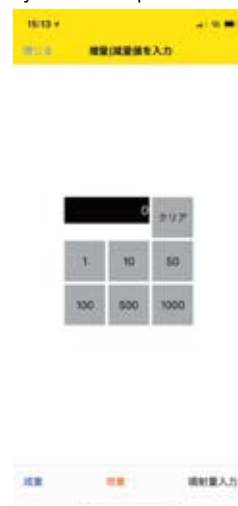
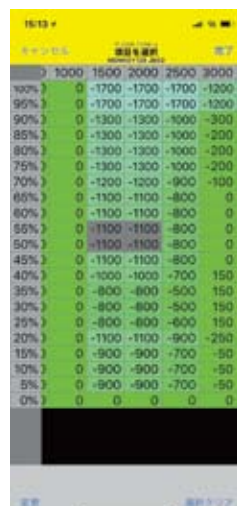
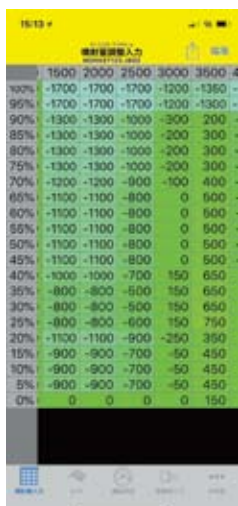
Tap 「Clear selection」 or tap the part that does not need to be edited. Tap 「Change」 if you want.

Enter increase/decrease value. Enter a number and tap one of 「decrease」, 「increase」 or 「Fuel adjustment value」 at the bottom of the screen.

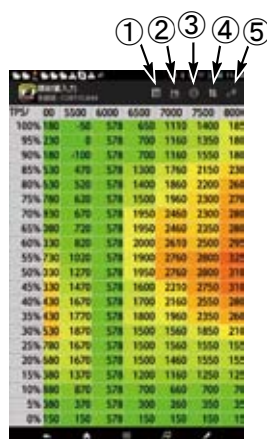
The value entered on the 「decrease」 map value is subtracted.

The value entered on the 「increase」 map will be added.

The number entered in 「Fuel adjustment value」 is entered directly on the map.



How to set with a Andoroid



Icon description

① Input the Injection amount

□ Map display screen/Icon to display the screen for inputting injection amount.

② chart (3D graphic display)

□ This is an icon for displaying the map as a 3D graphic.

③ Running condition (Displayed only when the FI controller and software are communicating)

□ It is possible to monitor the vehicle status while communicating with the FI controller.

- Pointer / digital tachometer
- TPS(Throttle position sensor) ※ Accelerator opening
- Rev limit
- Oil temperature
- Injector opening/closing rate (%)

④ FI CON TYPE-e or TYPE-X

□ Used to connect FI CON to the main unit/write/extract/save etc.

- Detail View
- Map Data
- Save map data
- Load a new preset map
- Extract from FICON
- Write to FICON
- Serch to FICON
- Connect to FICON
- Disconnect FICON

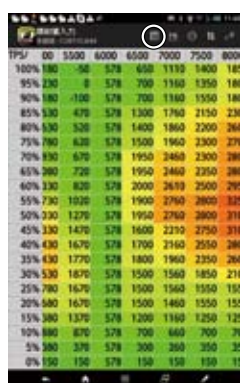
⑤ Tool

□ You can set, select and edit the following items.

- FICON setting
- TPS setting
- Acceleration pump
- Select MODEL
- License information

● When start to setting based on the currently used map data

Tap the circle (in the upper right corner) of the screen (injection amount input) to select.



Tap 「Extract from FICON」 from (the circle in the upper right corner) of the screen, connect to FICON TYPE-e or TYPE-X, open Map and edit. Tap the area you want to touch, and when it turns gray, tap and hold the gray area again.



Enter increase/decrease value.

Select and enter a set value from the table below or enter it (using the keyboard) and tap Increase or Decrease to see the value on the Map. The changes will be made, so please tap the icon ④ and write it to the FI controller.



■ Acceleration pump setting / engine speed correction

● Acceleration pump setting

When the throttle is turned on suddenly, in order to avoid a temporary decrease in fuel adjustment, a single boost injection is performed asynchronously.

Increase value is up to 2000 μ s with acceleration pump. The setting is determined by the throttle opening speed(time) and the change rate of opening.

The time can be set in the range of 0.1 to 0.9 seconds in increments of 0.1 seconds.

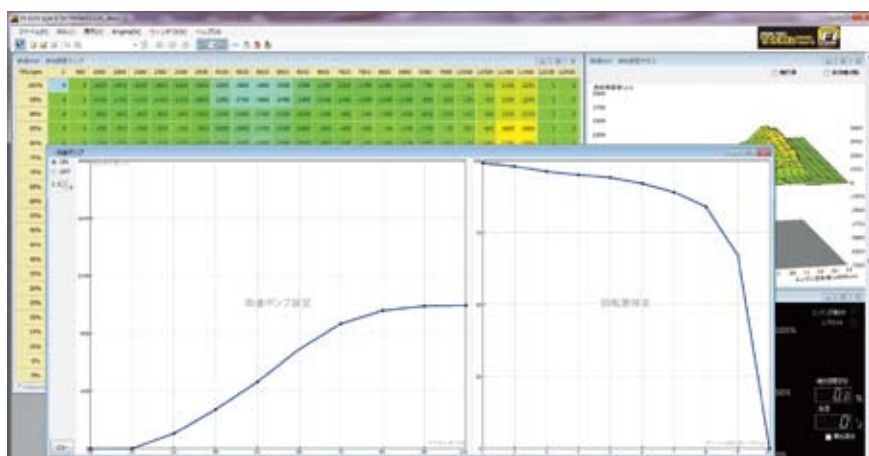
※ When set to 0.9 seconds, the acceleration pump will operate even if the throttle is operated very slowly. Set the injection amount. Sets the influence rate due to the speed of the acceleration pump. Usually, the higher the rotation speed, the lower the influence rate. If necessary, change the value by clicking directly on the part you want to change.

● Engine speed correction

Correct the acceleration pump for each engine speed.

When the engine is running at low speed, it requires the set injection quantity. At high speed, the injection quantity is not necessary than that at low speeds, so correction is required.

Setting with a PC



How to set with a smartphone

Tap and select 「Accele pump」 (at the bottom of the screen).

To change the value, tap to enter the value input screen.

■ Mounting procedure ※ Please refer to the Genuine Service Manual for detailed mounting methods and specified torques that are not specifically described.

■ Update

・ By selecting the update history of INDEX (at the top of the page), you can see the update history (at the bottom of the page).



・ If there is any change or correction to the fuel MAP, we will guide you through the contents within the arrow mark.



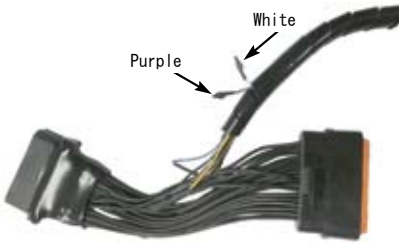
・ If there is any change or correction to the fuel MAP, we will guide you through the contents within the arrow mark.



Other functions

■Body harness

You can use more convenient functions by using the white and purple wire inside the spiral tube.



Pit lane limiter function (white)

This function is mainly used for speed limit in the pit lane of the raceway.

The pit lane limiter can be used the light green wiring (by removing the shrink tube) and connecting it to a switch (separately prepared) and connecting it from the switch to the body ground.※Please prepare the wiring for extending the switch separately.

⚠ Note

Be careful of shorts-circuit when processing. The body will be damaged if short-circuited.

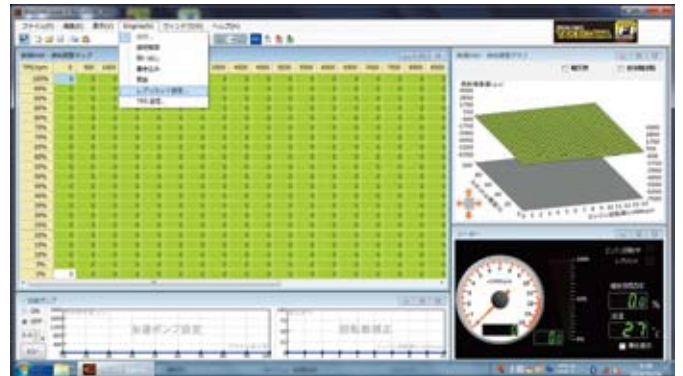
Setting with a PC

Select 「Rev limit setting」 from the upper 「FI CON TYPE-e」



Select the pit lane limiter function ON / OFF and enter the pit lane limit speed.

※The rev limit can also be adjusted. The pit lane limiter and rev limit, each are separate functions.



How to set with a smartphone

Tap 「Other」 → 「FI CON Settings」 (at the bottom right of the screen)

Select the pit lane limiter function ON / OFF and enter the pit lane limit speed.

※You can also adjust the rev limit.

The pit lane limiter and rev limit, each are separate functions.

■Reference

In the case of Monkey 125 with stock transmission, it will be 40km / h @ 7500rpm (approx)

Please check before actual use.



Please Select

FI CON setting

Setting TPS

Select MODEL

Cancel



Other functions



■ Body harness

You can use more convenient functions by using the purple wire inside the spiral tube.

Tachometer output service wire (Purple)

● Tachometer output service wire

- A purple wire and connect it to the tachometer. (by removing the shrink tube) Table below for compatible products that have been confirmed as of January 2023.

Product number	Product content
05-05-3210	Medium DN Tachometer T2 (White LED)
05-05-0078	φ 48 Small DN Tacho & Thermometer
05-05-0083	φ 48 Small DN Tachometer (12500RPM)
05-05-0092	Black & Green electrical Tachometer

※ Information and specifications as of January 2023. Subject to change without notice.

- Please check the tachometer instruction manual when installing. Need separate bracket harness.

■ Troubleshooting

FI warning light flashes and engine won't start	■ Read the error code and refer to the service manual to see if the terminal connector of the related code is damaged. Check if the wiring is disconnected.
---	--

