



27 Two-Piece Front Fork Kit for 8 inch Wheel

(for bar handle Fork width 174mm / Offset 60mm)

- Thank you for purchasing one of our TAKEGAWA products.
Please strictly follow the instructions to install and use the kit.
- Before installing the kit, please be sure to check the kit contents.
If you have any questions about the kit, please contact your local TAKEGAWA dealer.

Please note: Illustrations and photos may vary from actual hardware.

Item Nos : 06 - 01 - 0214 (With fender)
 : 06 - 01 - 0215 (Without fender)
Fits : Monkey BAJA
Frame Nos : Z50J-1700001 ~

Features

- Fork width 174mm, Offset 60mm.
- 60mm offset can extend the wheelbase and increase the stability.
- Machined and lightweight triple clamp.
- Buffed and polished finish.
- Included handle bar holder
- Anodized stem nut.
- Included steering lock bracket.

Read all instructions first before starting the installation.

We do not take any responsibility for any accident or damage whatsoever arising from the use of the product not in conformity with the instructions in this Instruction Manual.

We shall be held free from any kind of warranty whatsoever of products other than this product if the glitch takes place on the other products than this one after the installation and use of this product.

If you make modifications to any product supplied here, we shall be held free from any guarantee of the product.

You are requested not to contact us about the combination of our product with other manufacturers'.

Please do the disassembly and installation correctly, referring to a Honda's service manual for the Monkey or Gorilla.

This Kit is for 8-inch wheels only.

If you use our 8-inch aluminum wheel, please separately purchase 6-mm wheel spacers.

Neither a headlight stay, turn-signal stay nor a steering handle is included in this Kit. So, please purchase each one separately.

Please use our TAKEGAWA-made aluminum headlight stay of either 09-03-007, 008 or 09-03-07S.

The following steering handle types of our make are usable: Racing up, middle up, semi up, and BAT types.

The following TAKEGAWA-made parts are required for the use of this product:

A mirror with a 10mm thread (in packs of one)

Oval slide-type mirror (06-01-110)

NC31-type mirror (06-01-111)

Rectangular slide type mirror (06-01-112)

Mini mirror (right-hand mirror only) (06-01-113)

The brake cable included in this Kit cannot be installed onto a stock brake lever. Therefore, please separately purchase our brake lever.

Our products:

Quick lever assembly (06-08-3005)

Brake lever (06-08-300)

It is necessary to remove a stock throttle housing (integrated with a brake lever). Therefore, either our high throttle set or a Honda's genuine part is needed, which are compatible with the installed carburetor

In case our carburetor kit of PD22, PE24, VM26 or PE28 is used:

High throttle set (cable length: 810 mm) (09-02-0221, 09-02-0230 or -0231)

High throttle set (cable length: 700 mm) (09-02-0222, 09-02-0232 or -0233)

In case a stock carburetor, or our carburetor kit of PC18, PC20, PD22, or PE24 is used:

(In the case of PD22 or PE24, a high throttle can be used.)

Honda genuine parts

Throttle housing (1 pc) (53168-166-000)

Throttle housing (1 pc) (53167-GE4-000)

Pan screw, 5 x 22 (2 pcs) (93500-05022-0G)

A genuine throttle cable cannot be used on a motorcycle with a frame No. Z50J-130017 ~ 1510400.

If a stock carburetor is installed, a cable complete and throttle of 17910-165-640 are required.

In installing this product onto a motorcycle with a frame No. Z50J-1300017 ~ 1510400, the following parts are additionally needed.

For a centrifugal clutch motorcycle:

Combination switch assembly (02-01-015)

For a manual clutch motorcycle:

Clutch lever & combination switch assembly (02-01-016)



The following show the envisioned possibility of injuries to human bodies and property damage as a result of disregarding the following cautions.

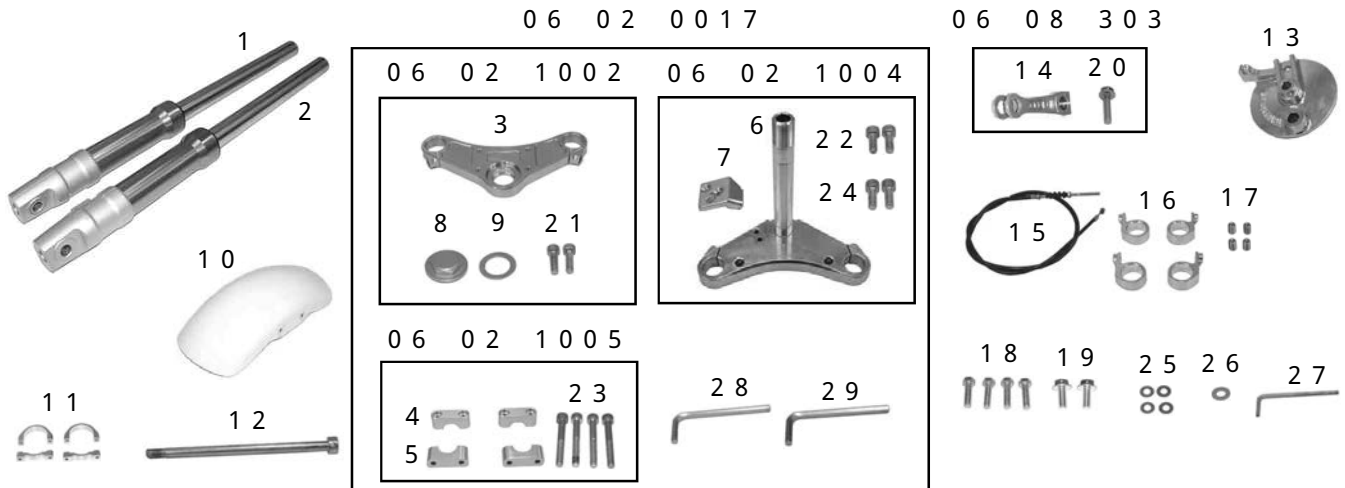
- Before starting installation, make sure that your bike is secure on level ground.
- Always use a torque wrench to screw bolts and nuts tight and securely to the specified torque.
(Otherwise, these parts may get damaged or fall off, resulting in accidents.)
- Do the installation with right tools. (Otherwise, breakage of parts or injuries to you may take place.)
- When unfastening a fork top bolt, please take note that there is a danger of the fork top bolt coming off flying, sprung by a fork spring.

WARNING The following show the envisioned possibility of human death or serious injuries to human bodies as a result of disregarding the following warnings.

- Those who are technically unskilled or inexperienced are required not to do the work. (Improper installation because of insufficient skill or knowledge could lead to parts breakage and subsequently to overturning or accidents.)
- Before riding, always check every hardware like screws for slack. When you notice something abnormal with your motorcycle while riding, immediately stop riding and park your motorcycle in a safe place to check what has gone wrong. (Otherwise, the malfunction could lead to accidents.)
- Do not let the oil and grease adhere to the brake lining or brake shoes. If oil or grease adheres to them, change the brake shoe, and degrease the brake lining. (Otherwise, the adherence may lead to an accident.)
- Get the brakes installed by a skilled mechanic at facilities with special instruments and tools. (Otherwise, the wrong installation will cause accidents.)

Please be informed that, mainly because of improvement in performance, design changes, and cost increase, the product specifications and prices are subject to change without prior notice. This manual should be retained for future reference.

Kit consists of:



No.	Part Name	Qty	Repair Part Item No.	in packs of	No.	Part Name	Qty	Repair Part Item No.	in packs of
1	Left-side front fork assembly	1	51508-GEF-T00	1	16	Head light guard bracket	4	09-03-06 (w/screws) 4pcs	1SET
2	Right-side front fork assembly	1	51408-GEF-T01	1	17	Socket set screw, 5 x 8	4	00-00-0059	10
3	Fork top bridge	1	_____	1	*18	Hex bolt, 5 x 20	4	00-00-0113	5
4	Upper handle holder	2	54411-165-T00	1	19	Flange bolt, 6 x 15	2	00-00-0114	4
5	Lower handle holder	2	54412-165-T00	1	20	Flange bolt, 6 x 25	1	00-00-0115	5
6	Steering stem COMP.	1	_____	1	21	Socket cap screw, 6 x 20	2	00-00-0043	10
7	Steering lock bracket	1	53601-GEF-T00	1	22	Socket cap screw, 6 x 12	2	00-00-0116	6
8	Stem nut	1	54303-165-T00	1	23	Socket cap screw, 6 x 50	4	00-00-0044	3
9	Stem nut washer	1	90503-165-T00	1	24	Socket cap screw, 8 x 25	2	00-00-0075	4
*10	Front fender	1	61100-181-T00	1	*25	Plain washer, 5 mm	4	00-00-0118	10
*11	Front fender bracket	2	61102-181-T00	1	26	Plain washer, 6 mm	1	00-00-0086	10
12	Front axle shaft	1	44301-124-T00	1	27	Hex wrench, 2.5 mm	1	_____	_____
13	Front brake panel	1	45101-165-T00A	1	28	Hex wrench, 5 mm	1	_____	_____
14	Brake arm	1	_____	_____	29	Hex wrench, 6 mm	1	_____	_____
15	Front brake cable (750mm)	1	45451-165-T00	1					

Item numbers marked with an asterisk is not included in the Kit of 06-01-0215.

Please order repair parts with the Repair Part Item No. Without the repair part item NO., we may not be able to accept your orders. Some parts are only available as a set. In this case, please order them with the set number.

~ Installation Instructions ~

Disassembly:

- 1 . Loosen an axle nut on the front wheel.
- 2 . Before starting the work, stand your bike securely on a rear maintenance stand placed on a suitable pedestal under the engine. Choose a pedestal of a height so the front wheel is just off the ground.
- 3 . Remove brake wires on the wheel side.
- 4 . Unscrew four right and left bolts on the headlight guard to detach the head light guard.
- 5 . Pull out an axle nut and axle shaft to remove the front wheel.
- 6 . Unfasten a nut on the lower handle holder at the back of the top bridge, and demount a steering handle assembly.
- 7 . Unfasten a fork bolt, stem nut and washer to remove the top bridge.
- 8 . Remove a top thread and then a fork assembly. Be careful not to lose bearing balls.
- 9 . Remove a handle lock from a stock steering stem, which please attach to a steering lock bracket.

Caution: Apply the specified torque.
Torque: 9 N·m (0.9 kgf·m)



Assembly:

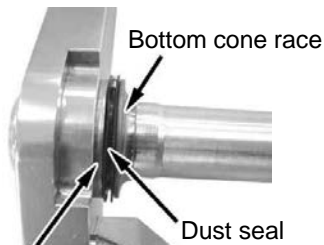
- 1 0 . Install the steering lock bracket to the steering stem with a 6x12 socket cap screw.

⚠Caution: Apply the specified torque.

Torque: 12 N·m (1.2 kgf·m)



- 1 1 . Remove a bottom cone race on the steering stem with a punch driver or a chisel, and detach a dust seal and dust seal washer. And attach the dust seal washer, dust seal, and bottom cone race to the duralumin stem shaft.



- 1 2 . Apply grease to the top cone race and bottom cone race, and attach the bearing to the steering stem and head pipe, and then the top cone race to the head pipe. In case the balls are not set in the bearing, then install 21 balls each to the bottom cone race and top cone race. Before applying grease, first wash the bearing with wash oil. Be careful not to let the dirt adhere to the bearing.



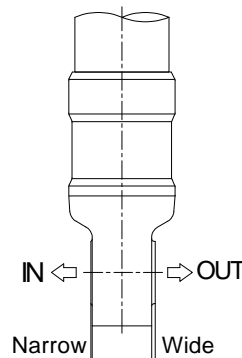
- 1 3 . Fit the steering stem into the head pipe, and finger tighten the top thread as tight as possible. Move it several times to the right and left so the bearing may fit right. Give it 1/8 turns backward and check that it moves smoothly and without rattling.



- 1 4 . Fit the front fork to the steering stem with the whirl stop on the axle holder on the right viewed in the direction of travel. And tighten an 8x20 steering-stem split clamp bolt loosely for the moment.



- 1 5 . Fit the front fork on the left side in the same way as you fitted it on the right side. Protruding "Wide" should be installed outside. In case a front-fork clamp-type headlight bracket is used, fit the headlight bracket into the front fork.



- 1 6 . Pass two head light guard brackets through each front fork. Beware of the direction!!



- 1 7 . Routing the wire harness in the same way as the stock one, fit the top bridge into the front fork and stem shaft. And attach the stem washer and tighten the stem nut to the specified torque.

⚠Caution: Apply the specified torque.

Torque: 59 N·m (6.0 kgf·m)



- 1 8 . Loosen the split clamp bolt on the steering stem, and adjust the right and left inner tubes to protrude in the same length. Protrude the inner tube about 30 mm so the caster angles become the same as the stock caster angles.



- 1 9 . Tighten the split clamp bolt on the steering stem to the specified torque.

⚠Caution: Apply the specified torque.

Torque: 26 N·m (2.7 kgf·m)

- 2 0 . Tighten a 6x20 split clamp bolt on the top bridge to the specified torque.

⚠Caution: Apply the specified torque.

Torque: 12 N·m (1.2 kgf·m)

- 2 1 . Fit a steering handle pipe into the handle holder and install it to the top bridge. Tighten a 6x50 socket cap screw on the handle holder to the specified torque.

⚠Caution: Apply the specified torque.

Torque: 12 N·m (1.2 kgf·m)

Tighten the handle holders to be spaced equally in the front and at the back.



- 2 2 . With a 6x12 flange bolt which was holding the head light guard when a stock front fork was used, fasten for now the head light guard bracket to the head light guard.



Adjust the height of the head light guard, and tighten four socket set screws.

⚠Caution: Apply the specified torque.

Torque: 6 N·m (0.6 kgf·m)



- 2 3 . Install a horn. (The photo below shows the horn installed onto the steering stem.)
If you install the horn to the steering stem, fold back the stay as shown in the photo below, and fix it by tightening up a 6x15 flange bolt.

⚠Caution: Apply the specified torque.

Torque: 12 N·m (1.2 kgf·m)

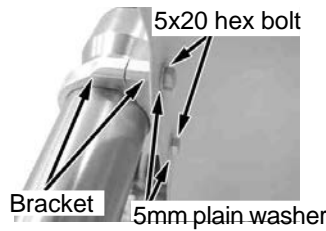


About 40 mm



- 2 4 . (0 6 - 0 1 - 0 2 1 4)

As shown in the photo below, attach a front fender and bracket with hex bolts and tighten it. Leave loose for now.



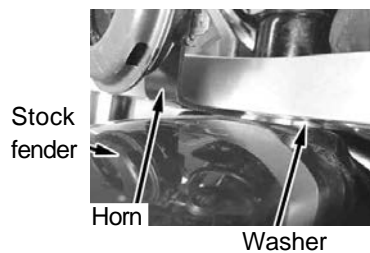
- (0 6 - 0 1 - 0 2 1 5)

Install the stock front fender and bolt.

If you install the horn onto the steering stem, using a stock front fender, place the horn in between the front fender and steering stem. Install a washer of about 1.5 mm in thickness in another clearance between front fender and steering stem, and tighten it with a 6x15 flange bolt.

⚠Caution: Apply the specified torque.

Torque: 12 N·m (1.2 kgf·m)



- 2 5 . Unfasten a nut which is holding both the hub on the front wheel and the wheel. And fix the hub with the air valve on the left.

⚠Caution: Apply the specified torque.

Torque: 25 N·m (2.5 kgf·m)

If our 8inch aluminum wheel is used, the air valve should be on the right side. And fix the wheel spacer of 6mm in thickness between the hub and wheel.



- 2 6 . Remove the brake shoe and front brake cam from the stock brake panel, which please attach to our brake panel. And install our brake arm onto the front brake cam with a 6x25 flange bolt.

⚠Caution: Apply the specified torque.

Torque: 12 N·m (1.2 kgf·m)

Wipe off the old grease on the front brake cam and apply new grease to it.



- 2 7 . Install the removed front frame with a provided axle shaft in the reverse order of its removal.



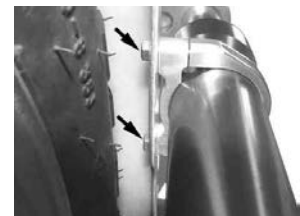
- 2 8 . Replace the brake wire with the provided one.

- 2 9 . Route the brake wire just as the stock one was routed, and attach it to the brake panel.

- 3 0 . Tighten up the flange cap screw holding the wheel and hub.

⚠Caution: Apply the specified torque.

Torque: 5 N·m (0.5 kgf·m)



- 3 1 . Dismantle the vehicle from the maintenance stand and pedestal.

- 3 2 . Tighten the axle nut.

⚠Caution: Apply the specified torque.

Torque: 62 N·m (6.3 kgf·m)

How to change front fork oil:

- 1 . Loosen a fork top bolt.
- 2 . Loosen an axle nut on the front wheel, and detach only a nut.
- 3 . Before starting the work, stand your bike securely on a rear maintenance stand placed on a suitable pedestal under the engine.
The work will be easier at the height obtained when your bike stands with the front fork stretched to the fullest extent.
- 4 . Pull out the axle shaft to detach a front wheel.
- 5 . Loosen the split clamp bolts on the top bridge and stem to detach a fork.
- 6 . Detach a top bolt, being careful not to let it fly out. Prepare an oil pan, and stand the fork upside down to pull out the spring.
- 7 . Expand and contract the inner tube to drain the fork oil. (Leave the inner tube facing downwards for a few minutes.)
- 8 . Stand the front fork to inject fork oil.
Fork oil : No. 20
Fork oil amount: 68 cc per fork
- 9 . Wipe off oil on the fork spring, and put in the spring with the narrower-pitched portion facing downwards. Attach the top bolt and tighten it loosely for the moment.
- 10 . Install the front fork to the stem and top bridge, and tighten the split clamp bolt loosely for now.
- 11 . Tighten the top bolt to the specified torque.

⚠Caution: Apply the specified torque.

Torque: 20 ~ 24 N · m (2.0 ~ 2.5 kgf · m)

- 12 . Tighten the split clamp bolts on the steering stem and top bridge to the specified torque.

⚠Caution: Apply the specified torque.

Torque: 26 N · m (2.7 kgf · m) for steering stem,
12 N · m (1.2 kgf · m) for top bridge

- 13 . Install the front wheel in the reverse order of disassembly.

⚠Caution: Apply the specified torque.

Torque: 62 N · m (6.3 kgf · m) for axle nut

SPECIAL PARTS TAKEGAWA Co.,Ltd.

3-5-16 Nishikiorihigashi Tondabayashi Osaka Japan

TEL : 81-721-25-1357 FAX : 81-721-24-5059

URL : <http://www.takegawa.co.jp>