



# 30 Front Fork Instruction Manual

Item No. : 0 6 0 1 0 7 2 3  
 Fits : Monkey and Gorilla  
 Frame Nos : Z50J-1300017 ~

- Thank you for purchasing one of our products. Please strictly follow the following instructions in installing and using the product.
- Before installing them, please be sure to check the product contents. Should you have any questions about the products, please contact your local motorcycle dealer.

**Please note: Illustrations and photos may vary from actual hardware.**

## Read all instructions first before starting the installation

- This product is for exclusive with our TAKEGAWA's 30 Fork Steering Kit.
- For installation of this product, please use a top bridge and a steering stem both for a 30mm-diameter inner tube. And please do not use this product in combination with other manufacturers'. As an option, the preload of a spring can be adjusted, spring adjuster is available.
- For a front brake caliper, please use the one of Item No. 06-08-115.
- Please be informed that we are not in a position to answer your questions about the combination of our product with other manufacturers', and that the product is subject to change without prior notice due to the improvement to the product.

	<b>CAUTION</b>	The following show the envisioned possibility of injuries to human bodies and property damage as a result of disregarding the following cautions.
<ul style="list-style-type: none"> <li>• Before starting the work, secure your motorcycle firmly on level ground for safety's sake.</li> <li>• Always use a torque wrench to screw bolts and nuts tight and securely to the specified torque.</li> <li>• Always replace the bent or damaged inner tube and bottom case with the new ones. Never make processing or alterations to these parts, which may cause accidents.</li> <li>• Take out a fork top bolt with great care, for there is danger of the bolt being sent flying by the fork spring.</li> <li>• Before riding, always check every hardware for slack in parts and oil leak. When you notice something unusual with your motorcycle while riding, immediately stop riding and park your motorcycle in a safe place to check what has gone wrong. And whenever you detect malfunctions, NEVER keep on riding without fixing your motorcycle.</li> </ul>		

## Features

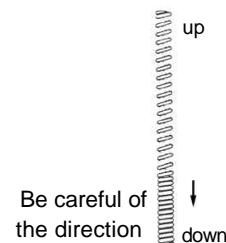
A suspension is needed to match the high-powered engine. With the use of the 30mm-diameter inner tube, the rigidity of the fork is improved. Use of the same inner structure as the one for the well-accepted 27mm fork enhances the operability. The bottom case is treated with clear coating after being buffed, .

## How to change the front fork oil

- 1 . First loosen the bolts on the top bridge and stem, and then detach the fork. (Detach the fork only after loosening the fork top bolt.)
- 2 . Unfasten the bolt being careful not to send the top bolt flying out. Prepare an oil pan, and turn the fork upside down. And detach the collar, joint plate and spring.
- 3 . Expand and contract the inner tube to drain the fork oil. (Leave the inner tube facing downwards for a few minutes.)
- 4 . Stand the front fork to inject fork oil.  
 Fork oil: No. 20  
 Fork oil amount: 155 cc per fork



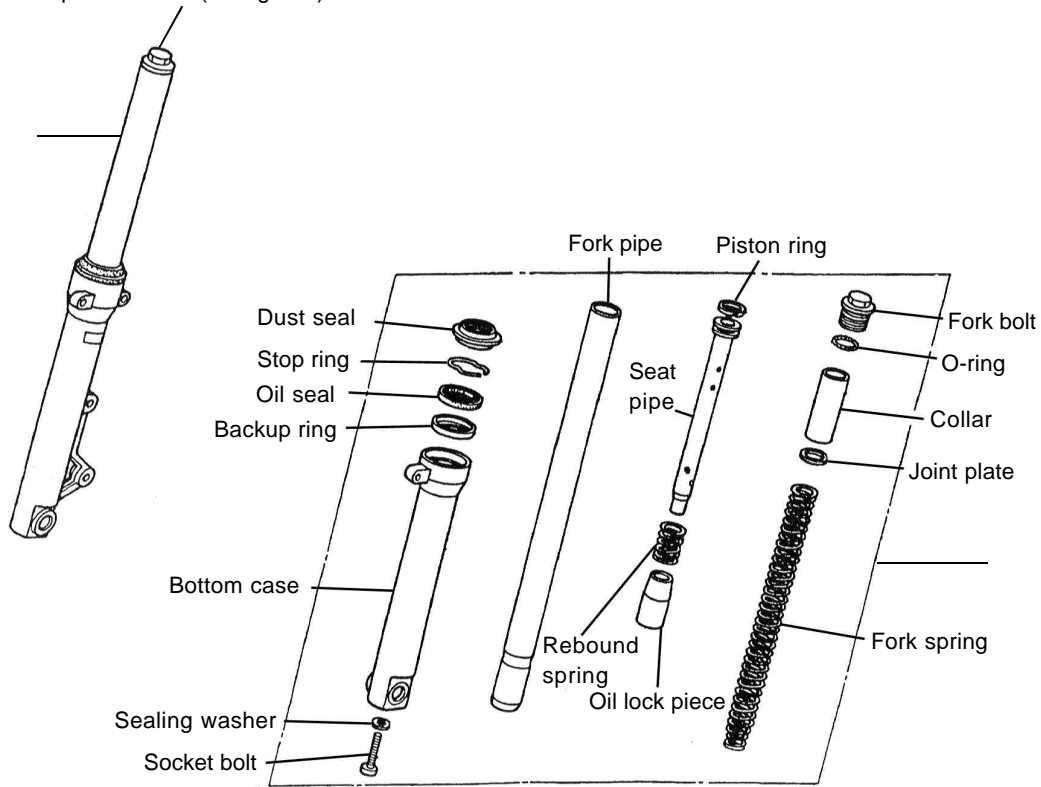
- 5 . Wipe off the oil on the fork spring, and put in the spring with the narrower-pitched portion facing downwards. Attach the joint plate and collar, and tighten the top bolt loosely for now.



- 6 . Attach the fork to the stem and top bridge, and tighten the top bolt to the specified torque.

<p> Caution : Be sure to follow the specified torque.  <b>Torque: 20 ~ 24 N · m (2.0 ~ 2.5 kgf · m)</b></p>
---

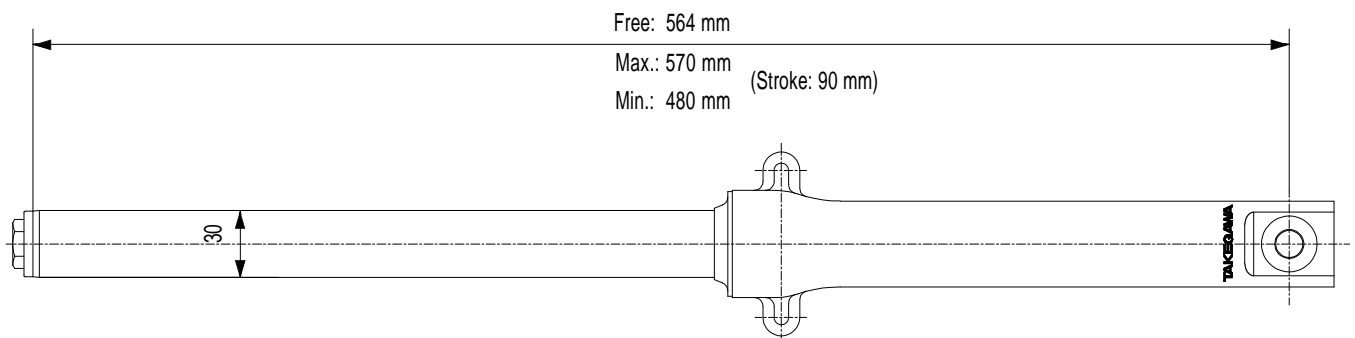
Torque: 23 N · m (2.3 kgf · m)



No.	Part Name	Qty	Repair Part Item No.	in packs of
1	Right side front fork assembly	1	51400-GEF-T20	1
2	Left side front fork assembly	1	51500-GEF-T20	1
3	Dust seal	1	06-01-0016	1
4	Oil seal	1		

Please order repair parts with the Repair Part Item No. Without the repair part item No., we may not be able to provide the correct parts.

Some parts are only available as a set. Please order them with the set number.



**SPECIAL PARTS TAKEGAWA** Co.,Ltd.  
 3-5-16 Nishikiorihigashi Tondabayashi Osaka Japan  
 TEL : 81-721-25-1357 FAX : 81-721-24-5059  
 URL : <http://www.takegawa.co.jp>