



# 30 Front Fork & Front Drum Brake Set Instruction Manual

(Fork width 198mm / Offset 60mm)

- Thank you for purchasing one of our products.  
Please strictly follow the instruction to install and use the Kit.
  - Before installing the Set, please be sure to check the Set contents.  
If you have any questions about the Set, please contact your local TAKEGAWA dealer.
- Please note: Illustrations and photos may vary from the actual hardware.**

Item No. : 0 6 - 0 1 - 0 7 2 9

Fitting model and frame No.:

Monkey and Gorilla : Z50J-1300017 ~  
: AB27-1000001 ~  
Monkey (FI) : AB27-1900001 ~

## Safety Precautions for Use

- This kit not included other than Front fork and Triple clamp.
- You need 10" inch wheel and other parts.



### CAUTION

The following show the envisioned possibility of injuries to human bodies and property damage as a result of disregarding the following cautions.

- Make sure before starting the installation that the motorcycle is secure on level ground.
- Always use a torque wrench to tighten bolts and nuts securely to the specified torque to avoid these parts getting damaged or loose.
- Do the installation with right tools.
- Please take note that a top bolt may come flying, sprung by a fork spring when unfastening a fork top bolt.
- As some products and frames have sharp edges or protruding portions, work with your hands protected to avoid injuries.



### WARNING

The following show the envisioned possibility of human death or serious injuries to human bodies as a result of disregarding the following warnings.

- Those who are technically unskilled or inexperienced are required not to do the work.  
(Improper installation because of insufficient skill or knowledge could lead to parts breakage and subsequently to accidents.)
- Before riding, be sure to check every section for slack in parts like screws, and oil leak. When you notice something abnormal with your motorcycle while riding, immediately stop riding and park your motorcycle in a safe place to check what has gone wrong.  
(Otherwise, the abnormality could lead to accidents.)
- Make sure to degrease brake shoe and drum before you ride.
- We recommend that the brake be installed by a qualified motorcycle technician at a well-equipped facility. (Otherwise, accidents may take place.)

The following TAKEGAWA-made parts are required for the use of this product:

- A mirror with a 10mm thread (in packs of one)
- Oval slide-type mirror (06-01-110)
- NC31-type mirror (06-01-111)
- Rectangular slide type mirror (06-01-112)
- Mini mirror (right-hand mirror only) (06-01-113)

The brake cable included in this Kit cannot be installed onto a stock brake lever. Therefore, please separately purchase our brake lever.

Our products:

- Quick lever assembly (06-08-3005)
- Brake lever (06-08-300)

It is necessary to remove a stock throttle housing (integrated with a brake lever). Therefore, either our high throttle set or a Honda's genuine part is needed, which are compatible with the installed carburetor

In case our carburetor kit of PD22, PE24, VM26 or PE28 is used:

- High throttle set (cable length: 810 mm) (09-02-0221, 09-02-0231 or -0233)
- High throttle set (cable length: 710 mm) (09-02-0222, 09-02-0230 or -0232)

In case a stock carburetor, or our carburetor kit of PC18, PC20, PD22, or PE24 is used:

(In the case of PD22 or PE24, a high throttle can be used.)

Honda genuine parts

- Throttle housing (1 pc) (53168-166-000)
- Throttle housing (1 pc) (53167-GE4-000)
- Pan screw, 5 x 22 (2 pcs) (93500-05022-0G)

A genuine throttle cable cannot be used on a motorcycle with a frame No. Z50J-130017 ~ 1510400.

If a stock carburetor is installed, a cable complete and throttle of 17910-165-640 are required.

In installing this product onto a motorcycle with a frame No. Z50J-1300017 ~ 1510400, the following parts are additionally needed.

For a centrifugal clutch motorcycle:

- Combination switch assembly (02-01-015)

For a manual clutch motorcycle:

- Clutch lever & combination switch assembly (02-01-016)

## Features

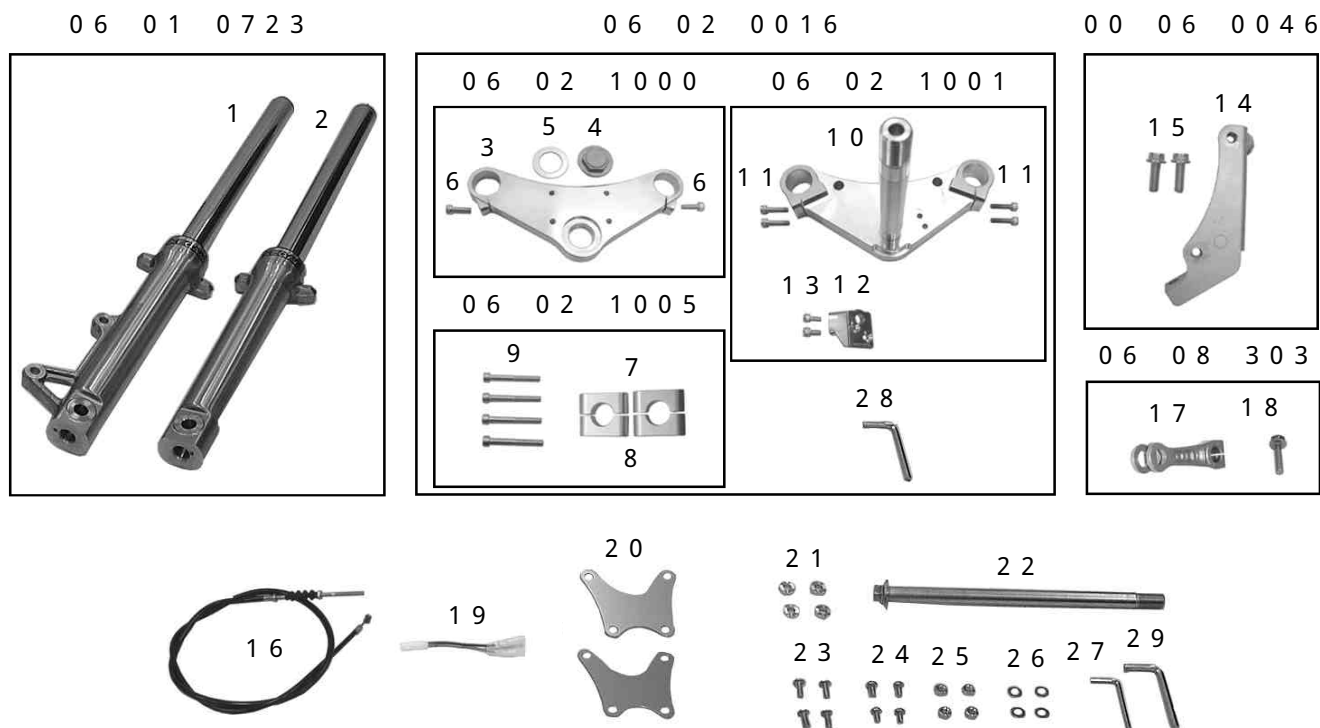
- The wide stem type 30 front fork assembly (60mm offset type), can extend the wheelbase and increase the stability of the front wheel.
- 198mm width and 60mm offset triple clamp can installation of 3.5J wide rims.
- Light weighing machining.
- A stock steering lock, oil cooler, meter and bracket can be fixed to the steering stem.

Please be informed that, mainly because of improvement in performance, design changes, and cost increase, the product specifications and prices are subject to change without prior notice.

We shall be held free from any kind of warranty whatsoever of products other than this product if the glitch takes place on the other products than this one after the installation and use of this product.

This manual should be retained for future reference.

### Kit includes:

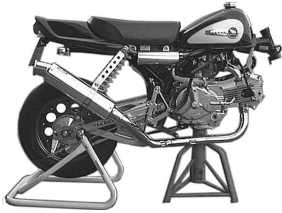


No.	Part Name	Qty	Repair Part Item No.	in packs of	No.	Part Name	Qty	Repair Part Item No.	in packs of
1	Right side front fork assembly	1	51400-GEF-T10	1	16	Front brake cable, 940 mm	1	45451-165-T20	1
2	Left side front fork assembly	1	51500-GEF-T10	1	17	Brake arm	1		
3	Top bridge	1			18	Flange bolt, 6 x 25	1	00-00-0115	5
4	Steering stem nut	1	54303-165-T00	1	19	Sub-cord	1	37600-KCZ-T00	1
5	Stem nut washer	1	90503-165-T00	1	20	Front fender stay	2	61110-181-T00	1
6	Socket cap screw, 6 x 20	2	00-00-0043	10	21	Fender stay collar	4	61111-181-T00	1
7	Upper handle holder	2	54411-165-T00	1	22	Front axle	1	44301-GFL-T00	1
8	Lower handle holder	2	54412-165-T00	1	23	Button head cap screw, 6 x 15	4	00-00-0132	4
9	Socket cap screw, 6 x 50	4	00-00-0044	3	24	Button head cap screw, 6 x 10	4	00-00-0092	5
10	Steering stem COMP.	1			25	Hex nut, 6 mm	4	00-00-0128	10
11	Socket cap screw, 6 x 25	4	00-00-0089	10	26	Plain washer, 6 mm	4	00-00-0086	10
12	Steering lock bracket	1	53601-GEF-T00	1	27	Hex wrench, 4 mm	1		
13	Socket cap screw, 6 x 12	2	00-00-0116	6	28	Hex wrench, 5 mm	1		
14	Front brake cable bracket	1	45220-GFL-T01	1	29	Hex wrench, 6 mm	1		
15	Flange cap screw, 8 x 30	2	00-00-0352	2					

Please order repair parts with the Repair Part Item No. Without the repair part item No., we may not be able to provide the correct parts. Some parts are only available as a set. Please order them with the set number.

## ~ Installation Instructions ~

- 1 . Before starting the work, stand your motorcycle securely on a rear maintenance stand and secure the engine on a suitable pedestal.



- 2 . Remove the steering lock from the steering stem, and install it on the steering lock bracket.

⚠ Caution: Apply the specified torque.  
**Torque: 9 N · m (0.9 kgf · m)**



- 3 . Install the steering lock bracket on the steering stem COMP. with a socket cap screw.

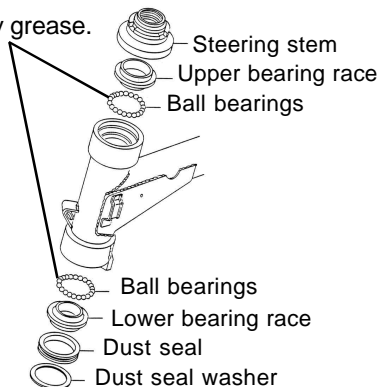
⚠ Caution: Apply the specified torque.  
**Torque: 12 N · m (1.2 kgf · m)**



- 4 . Remove the lower bearing race of the steering stem with a punch driver or a chisel, and remove the dust seal and the dust seal washer. Install the dust seal washer, the dust seal, and the lower bearing race on the steering stem COMP.

- 5 . Apply the grease well to the upper and lower bearing races, and install the ball bearings. The ball bearings should be washed before installing, and keep from dusts.

Apply grease.



- 6 . Install the steering stem on the steering head, and then install the upper bearing race and the steering stem adjusting nut on it. Then, tighten the steering stem adjusting nut fully by hand. Move the stem four to five times to the right and left. After the steel balls have fit in all right, then tighten the top thread to the specified torque.

⚠ Caution: Apply the specified torque.  
**Torque: 2 N · m (0.2 kgf · m)**

Check that the steering stem moves smoothly without being shaky.



- 7 Remove the engine stand. Install the top bridge, and fasten the stem nut with a washer temporarily.

- 8 . Tighten the stem nut to the specified torque.

⚠ Caution: Apply the specified torque.  
**Torque: 59 N · m (6.0 kgf · m)**



- 9 Install the 30 front fork. Tighten the top bridge and the clamp bolt to the specified torque.

⚠ Caution: Apply the specified torque.  
**Torque: 15 N · m (1.5 kgf · m)**



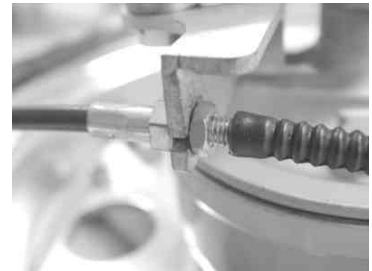
- 10 . Attach the front brake cable bracket.

⚠ Caution: Apply the specified torque.  
**Torque: 23 N · m (2.3 kgf · m)**



- 11 . Install the brake cable on the bracket.

⚠ Caution: Apply the specified torque.  
**Torque: 6 N · m (0.6 kgf · m)**



- 12 . Replace stock brake arm to Takegawa's brake arm.

⚠ Caution: Apply the specified torque.  
**Torque: 10 N · m (1.0 kgf · m)**



- 13 . Install front wheel.

- 14 . Meter gear, wheel hub and drum brake plate install with axle shaft.

- 15 . Install front brake cable.



- 16 . Put a collar in between the front fender stay and bottom case, attach the 6x15 button head screw, and tighten it to the specified torque.

⚠ Caution: Apply the specified torque.  
**Torque: 10 N · m (1.0 kgf · m)**



- 1 7 . Set the optional front fender in between the fender stays.  
Put a 6x10 button head screw into the fender stay, and attach a plain washer and hex nut from the back of the fender to secure the screw. Holding tight the hex nut with a spanner, tighten the screw to the specified torque.

⚠ Caution: Apply the specified torque.

**Torque: 7.8 N · m (0.8 kgf · m)**

For the installation of the front fender, please refer to its instruction manual.

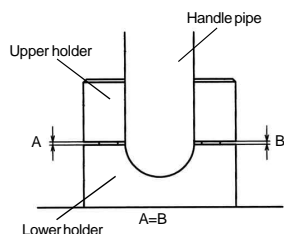


- 1 8 . Place the optional steering handle pipe in between the handle holders, and attach them to the top bridge.  
Tighten the socket cap screws on the handle holders to the specified torque.

⚠ Caution: Apply the specified torque.

**Torque: 12 N · m (1.2 kgf · m)**

Fasten the handle holders so the space at the front and back is equal.  
Please install the other parts referring to each instruction manual enclosed in the products.



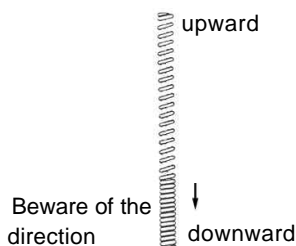
- 1 9 . Connect the cables of the stop switch sub-harness and turn-signal switch (combination switch).  
When installing onto the Monkey (FI model), connect the stop switch sub-harness and a sub-cord, and then connect the sub cord and the stop switch harness from the main harness.

## How to change front fork oil

- Loosen a bolt on the top bridge and the stem to remove the forks.  
Remove the forks only after loosening the fork top bolt.
- Unfasten the bolt being careful not to send the top bolt flying out.  
Prepare an oil pan, and turn the fork upside down. And detach the collar, joint plate and spring.
- Expand and contract the inner tube to drain the fork oil.  
(Leave the inner tube facing downwards for a few minutes.)
- Stand the front fork to inject fork oil.  
Fork oil : No. 20  
Fork oil amount : 155 cc per fork .



- Wipe off the oil on the fork spring, and put in the spring with the narrower-pitched portion facing downwards. Attach the joint plate and collar, and tighten the top bolt loosely for now.



- Attach the forks to the stem and top bridge, and tighten the top bolt to the specified torque.

⚠ Caution: Apply the specified torque.

**Torque: 20 ~ 24 N · m (2.0 ~ 2.5 kgf · m)**

**SPECIAL PARTS TAKEGAWA Co.,Ltd.**

3-5-16 Nishikiorihigashi Tondabayashi  
Osaka Japan

TEL : 81-721-25-1357 FAX : 81-721-24-5059

URL : <http://www.takegawa.co.jp>