



Instruction Manual for Master Cylinder Set for Stock Steps

Item No. : 0 6 1 3 0 0 0 3
Fits : Monkey · Gorilla

- Thank you for purchasing one of our TAKEGAWA-made products. Please strictly follow the following instructions in installing and using the Kit.
- Before installing the Kit, please be sure to check the Kit contents. Should you have any questions about the Kit, please contact your local motorcycle dealer.

Please note that, in some cases, the illustrations and photos may vary from the actual hardware.

Read all instructions first before starting the installation

This product is for exclusive use in motorcycles equipped with either a stock clutch cover or our TAKEGAWA's die-cast clutch cover. (Please note, however, that this product cannot be mounted on motorcycles equipped with our TAKEGAWA's cast aluminum clutch cover.)

We do not take any responsibility for any accident or damage whatsoever arising from the use of the Kit not in conformity with the instructions in this Instruction Manual.

We shall be held free from any kind of warranty whatsoever of products other than this product if the glitch takes place on the other products than this one after the installation and use of this product.

You are requested not to contact us about the combination of our products with other manufacturers'.

Please note that this Kit is designed for exclusive use in the above-mentioned compatible models only and that it cannot be mounted on any other models. Please order repair parts referring to Item Nos and reference Nos described in this manual. For further information, please contact your local motorcycle dealers.

Installation of this kit requires removal and reinstallation of a clutch cover. Please prepare and strictly follow a HONDA's service manual for your vehicle to do the work correctly. In addition, you need to prepare gaskets and packings suitable for the specifications of your vehicle.

CAUTION The following show the envisioned possibility of injuries to human bodies and property damage as a result of disregarding the following cautions.

- Always try to drive your motorcycle at legal speed, abiding by the laws.
- Work only when the engine and muffler are cool. (Otherwise, you will get burned.)
- Do the installation with right tools. (Otherwise, breakage of parts or injuries to you may take place.)
- Always use a torque wrench to screw bolts and nuts tight and securely to the specified torque. (Otherwise, these parts may get damaged or fall off, resulting in accidents.)
- As some products and frames have sharp edges or protruding portions, please work with your hands protected. (Otherwise, you will suffer injuries.)
- Before riding, always check every hardware like screws for slack. If you find slack ones, screw them securely up to the specified torque. (Otherwise, improper tightening may cause parts to come off.)
- Always use new gaskets and packing. And check those parts, to be reused, for wear and damage. If you find worn or damaged parts, replace them with new ones.
- Work with care so the brake fluid will not get on your skin. After the work, rinse your hands thoroughly with plenty of water. (Otherwise, your hands may get rough and dry.)
- Work with utmost care because the brake fluid will deteriorate or damage the painted surface, resin components, or rubber products if the fluid adheres to them. In this case, rinse the fluid-adhered portions with water without any loss of time. (Otherwise, this may cause the deterioration or damage of the parts.)

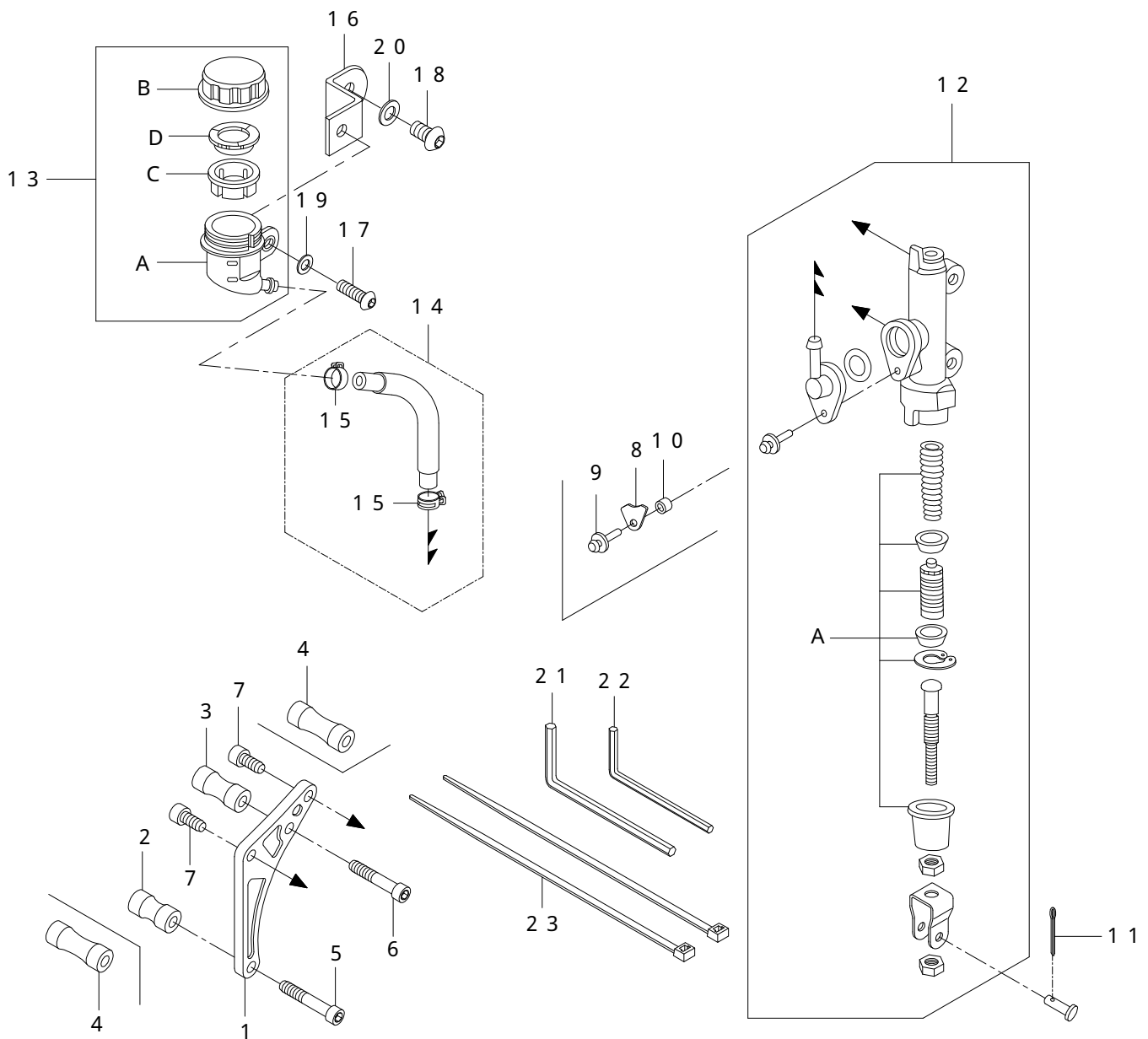
WARNING The following show the envisioned possibility of human death or serious injuries to human bodies as a result of disregarding the following warnings.

- Always start the engine in a well-ventilated place, and do not turn on the engine in an airtight place. (Otherwise, you will suffer from carbon monoxide poisoning.)
- When you notice something abnormal with your motorcycle while riding, immediately stop riding and park your motorcycle in a safe place to check what has gone wrong. (Otherwise, the malfunction could lead to accidents.)
- Before doing work, make sure your motorcycle is secure on level ground for safety's sake. (Otherwise, your motorcycle could overturn and injure you while you are working.)
- Check or carry out maintenance of your motorcycle correctly according to the procedures in the instruction manual or service manual. (Improper checking or maintenance could lead to accidents.)
- If you find damaged parts when checking and performing maintenance of your motorcycle, do not use these parts any longer, and replace them with new ones. (The continued use of these damaged parts as they are could lead to accidents.)
- As gasoline is highly flammable, never place it close to fire. Make sure that nothing flammable is near the gasoline. Since vaporized accumulation of gasoline is at high risk of explosion, work in a well-ventilated place. (Otherwise it may cause a fire.)
- Keep plastic bags for packing the products out of children's reach, or discard them. (If children get them on, there will be a danger of their suffocating.)
- Use only the specified brand of brake fluid. Do not mix different types of fluid, as they are not compatible with each other. (The blended use of fluid may cause technical troubles or chemical change.)
- Do not get oil or grease on the brake disk rotor or brake pad. If oil &/or grease adhere to these parts, change the brake pad and degrease the brake disk rotor. Otherwise, this may lead to accidents.
- Get the brakes installed by a skilled mechanic at facilities with special instruments and tools. Otherwise, the wrong installation will cause accidents.

Please be informed that, mainly because of improvement in performance, design changes, and cost increase, the product specifications and prices are subject to change without prior notice.

This manual should be retained for future reference.

Kit includes



No.	Part Name	Qty	Repair Part Item No.	in packs of	No.	Part Name	Qty	Repair Part Item No.	in packs of
1	Master cylinder bracket	1	43521-GEF-T00	1	13-A	Cup COMP.	(1)	06-08-0013	1
2	Collar, 24.5 mm	1	43532-GEF-T00	1	13-B	Cap	(1)	06-08-0007	1
3	Collar, 29.5 mm	1	43533-GEF-T00	1	13-C	Diaphragm	(1)	06-08-0008	1
4	Collar, 35.5 mm	2	43534-GEF-T00	1	13-D	Diaphragm plate	(1)	06-08-0009	1
5	Socket cap screw, 6 x 70	1	00-00-0080	2	14	Oil hose	1	00-07-0011	1SET
6	Socket cap screw, 6 x 75	1	00-00-0082	2	15	Hose clamp	2	00-00-0087	4
7	Socket cap screw, 6 x 16	2	00-00-0083	4	16	Reservoir tank stay	1	43610-181-T00	1
8	Connector swing plate	1			17	Button head screw, 6 x 20	1	00-00-0084	5
9	Screw, 4 x 16	1	06-08-0011	1	18	Button head screw, 8 x 15	1	00-00-0085	4
10	Collar, 8 x 5 x 5	1			19	Plain washer, 6 mm	1	00-00-0086	10
11	Split pin	1			20	Plain washer, 8 mm	1	00-00-0076	10
12	Rear master cylinder	1	06-08-1731	1	21	Hex wrench, 5 mm	1		
12-A	Master cylinder piston set	(1)	06-08-0012	1	22	Hex wrench, 4 mm	1		
13	Reservoir tank COMP.	1	06-08-0006	1	23	Insulation lock, 200 mm	2	09-071-042	10

Please note that in ordering repair parts, be sure to quote the Repair Part Item No. Otherwise, we may not be able to accept your orders. There are some parts, however, for which we are not in a position to accept your order in just the quantity to be used. In this case, please take them in the quantity packed.

~ Installation Procedures ~

Please check the kit contents, first.

△CAUTION : Be sure to prepare tools to suit your work.

△CAUTION : Check that the engine and muffler are cool.

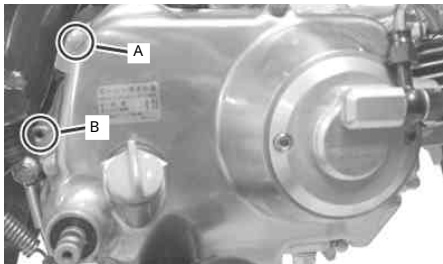
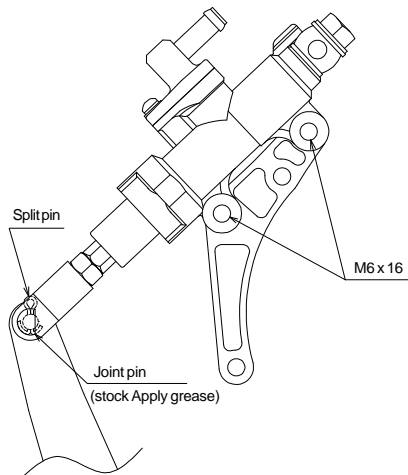
△WARNING: Make sure that the bike is secure on level ground.

Remove a brake rod from a kickstarter arm and a stock rear brake pedal.

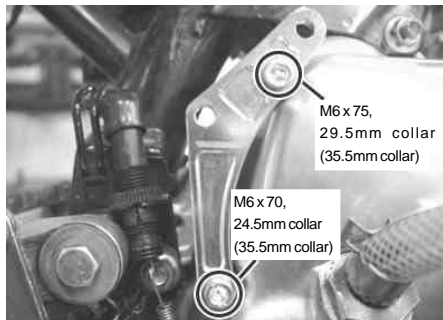
With a socket cap screw, tighten a master cylinder and a master cylinder bracket from the rear, to the specified torque.

△CAUTION : Be sure to always follow the specified torque.

Torque: 10 N · m (1.0 kgf · m)



Referring to the photo, unfasten A and B bolts.



The figures in parentheses are those when a die-cast clutch cover is in use.

In the case of stock clutch cover:

Install and tighten, with the provided bolt, a clutch cover, a 29.5mm and a 24.5mm collars, and a master cylinder bracket in this order, to the specified torque.

△CAUTION : Be sure to always follow the specified torque.

Torque: 10 N · m (1.0 kgf · m)

In the case of die-cast clutch cover:

Install and tighten, with the provided bolt, a clutch cover, a 35.5mm collar, and a master cylinder bracket in this order, to the specified torque.

△CAUTION : Be sure to always follow the specified torque.

Torque: 10 N · m (1.0 kgf · m)

With a stock joint pin and split pin, secure more firmly the lower joint on the master cylinder and the arm in the rear brake pedal lest they should come off.



Rotate the push rod on the master cylinder, and adjust the location of the brake pedal. And tighten the push rod with a hex nut.

△CAUTION : Be sure to always follow the specified torque.

Torque: 10 N · m (1.0 kgf · m)

Install the kickstarter arm.

△CAUTION : Be sure to always follow the specified torque.

Torque: 12 N · m (1.2 kgf · m)



With a banjo bolt, install and tighten the rear brake hose COMP. to the master cylinder and rear caliper assembly, placing sealing washers on both sides of the banjo.

△CAUTION : Be sure to always follow the specified torque.

**Torque: 13 ~ 15 N · m
(1.3 ~ 1.5 kgf · m)**



Secure the brake hose with a Insulation lock so it does not interfere with other parts, and cut off the excess portion of the Insulation lock with a nipper.



Install a reservoir tank stay to the oil cup COMP. with a plain washer and button head screw.

△CAUTION : Be sure to always follow the specified torque.

Torque: 10 N · m (1.0 kgf · m)

Demount a seat.

Demount a rear carrier.

If our TAKEGAWA-made Rear Cowl Kit is installed onto your motorcycle, please remove the rear cowl.

Onto the motorcycle equipped with our TAKEGAWA-made Rear Cowl Kit, install the reservoir tank stay to the tap on the seat stay with a plain washer and button head screw.

△CAUTION : Be sure to always follow the specified torque.

Torque: 23 N · m (2.3 kgf · m)

If your motorcycle is equipped with a rear carrier, install the reservoir tank stay to the tap to which a rear carrier was attached.



After determining how to route the oil hose, cut it. And attach it to the union on the oil cup and to the connector on the master cylinder COMP., and hold it with a hose clamp.

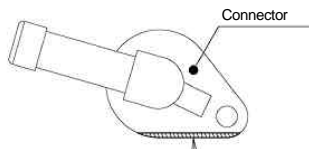
Before installing a down muffler, let out air following the instructions in the "Letting out the air."

In case you install a Z-style muffler, do the following work:

In the case of installing a Z-style muffler:

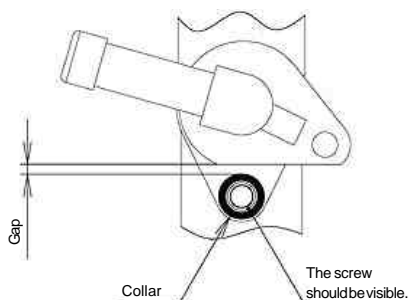
Detach a screw on the connector in the master cylinder.

Detach the connector on the master cylinder, and cut the heavy-lined portion, as shown in the figure below, about 1 mm with a file or something else.



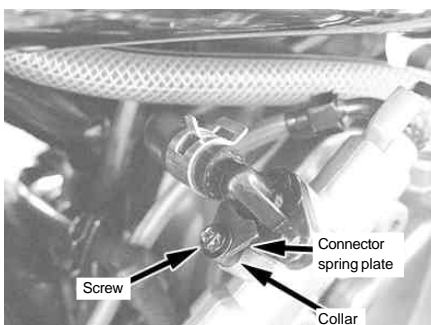
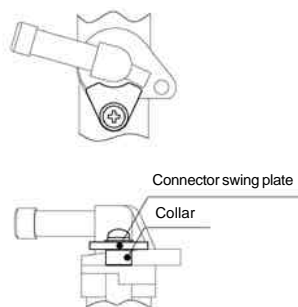
This portion needs grinding.

After grinding the connector, install it to the master cylinder in the direction as shown in the figure below, and check that there is no interference with the collar. After installing the collar, please see if the screw can be fastened. Moreover, check if there is no interference between the connector and the outside diameter of the collar.



The size and shape of the connectors vary among them. If it still interferes with the collar even after being cut 1 mm, then cut it more to the extent that it does not interfere any more.

Only after confirming that there is no more interference, attach a connector swing plate as shown in the figure below.



After attaching the connector swing plate, check that the connector is seated tight or it does not move.

If the connector is found firmly attached without any problem, apply screw locking agent to the thread part of the screw, and tighten it to the specified torque.

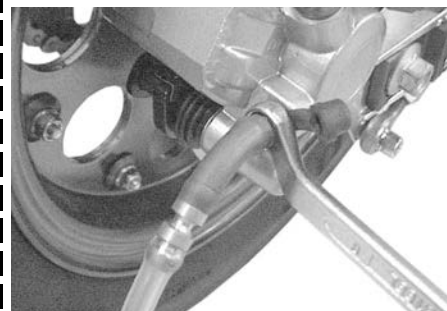
△CAUTION : Be sure to tighten to the specified torque.

Torque: 1 N·m (0.15 kgf·m)

Letting out the air:

Detach the cap, diaphragm plate and diaphragm on the oil cup, and add the brake fluid up to the upper level mark on the oil cup.

△CAUTION : Never produce air bubble in the brake fluid container by shaking it.



Connect the transparent bleeder hose to the bleeder valve on the rear caliper, and place a suitable cup at the other tip of the hose to receive brake fluid.

Give the bleeder valve half a turn to ease it. And repeat kicking down on the brake pedal and releasing it until brake fluid comes down from the bleeder valve in sufficient amount.

Do the work, adding new brake fluid, but paying heed to the amounts of brake fluid.

When the air does not come out any more from the bleeder valve, operate the brake pedal to check if no more air is mixed.

If you find that no more air is mixed, tighten the bleeder valve to the specified torque.

△CAUTION : Be sure to tighten to the specified torque.

Torque: 6 N·m (0.6 kgf·m)

Add the brake fluid up to the upper level mark on the oil cup, and attach the diaphragm and diaphragm plate cap.

△Warning : Never let the oil or grease adhere to a brake-disk rotor or brake pad. Should oil or grease adheres, degrease the rotor or change the pad.

Install the rear cowl and the seat to the motorcycle equipped with the TAKEGAWA-made Rear Cowl Kit .

In case your motorcycle is equipped with a carrier, detach a bolt which was holding the reserver tank, install the carrier, and install the oil cup by jointly fastening together one of four bolts holding the carrier and the reserver tank stay.

△CAUTION : Be sure to tighten to the specified torque.

Torque: 24 N·m (2.4 kgf·m)

Install the seat.

Thoroughly wipe off dust and dirt on every hardware.

△CAUTION : Be sure to tighten to the specified torque.

Torque: 24 N·m (2.4 kgf·m)

SPECIAL PARTS TAKEGAWA Co.,Ltd.

3-5-16 Nishikiorihigashi Tondabayashi
Osaka Japan

TEL : 81-721-25-1357 FAX : 81-721-24-5059

URL : <http://www.takegawa.co.jp>