



Instruction Manual

Speed meter Kit for XR50 / XR100 Motard

Item Nos	: 0 9 - 0 1 - 0 2 8 5	White & Black type Speed Meter
	: 0 9 - 0 1 - 0 2 8 6	Black & Green type Speed Meter
	: 0 9 - 0 1 - 0 2 8 7	LED type Speed Meter
	: 0 9 - 0 1 - 0 2 8 8	LCD Speed & Tacho Meter
Fitting	: XR50 / 100 Motard	

- Thank you for purchasing one of our TAKEGAWA-made products. Please strictly follow the following instructions in installing and using the kit.
- Before installing the kit, please be sure to check the kit contents. Should you have any questions about the kit, please contact your local motorcycle dealer.

~ Features ~

Small-sized meter, using a white meter panel, with an odometer with the max. reading of 140 km/h.

Speed meter, using a black meter panel with an odometer and a trip meter with the max reading of 160 km/h.

Speed meter, using a blue LED backlight with an odometer with the max reading of 140 km/h.

The meter looks quite different with digital LCD display and blue LED backlight. This is a multipurpose meter combining the functions of a speed meter, tachometer, and odometer.

Read all instructions first before starting the installation

We do not take any responsibility for any accident or damage whatsoever arising from the use of the kit not in conformity with the instructions in the manual.

We shall be held free from any responsibility or compensation whatsoever for any glitch in the parts other than ours if the glitch takes place after the installation and use of the kit.

If you make modifications to any product of the kit, we shall be held free from any guarantee of the product.

You are kindly requested not to contact us about the combination of our products with other manufacturers'.

Please note that this kit is designed for exclusive use in the above-mentioned fitting models and frame numbers only and that it cannot be mounted on other models.

Please order repair parts referring to Item Nos and reference Nos described in this manual. Should you have any questions about the products, please kindly contact your motorcycle dealer.

Please use this LCD meter with the following precautions in your mind:

- A liquid crystal display on the meter tends to turn dark when exposed to the direct sunlight for long hours.

Please take care not to leave it exposed to the direct sunlight. If it should become discolored, keep it away from the direct sunlight and cool it.

But it is likely that spots may remain on the display as after-effects particularly when the display is left exposed to the strong direct sunlight for a long time in midsummer, which please take note.

- This product is not perfectly waterproofed. The use in a highly humid atmosphere will likely result in images getting blurred because the meter gets wet inside. If the images get blurred, pull a rubber cap around the wiring cords on the back of the meter (do it with care not to pull the wirings forcibly) to make an opening and dry the moisture.



The following show the envisioned possibility of injuries to human bodies and property damage as a result of disregarding the following cautions.

- Please take note that the speed alarming function will be lost with the installation of this meter. Always try to drive your motorcycle at a legal speed, abiding by the laws.
- Work only when the engine and muffler are cool. (Otherwise, you will burn yourself.)
- Do the installation with right tools. (Otherwise, breakage of parts or injuries to yourself may take place.)
- Always use a torque wrench to screw bolts and nuts tight and securely to the specified torque. (Otherwise, these parts may get damaged or fall off, resulting in accidents.)
- As some products and frames have sharp edges or protruding portions, please work with your hands protected. (Otherwise, you will suffer injuries.)
- Before riding, always check every section for slack in parts like screws. If you find slack ones, screw them securely up to the specified torque. (Otherwise, improper tightening may cause parts to come off.)
- Always use new gaskets, and packings. And check those parts to be reused for wear and damage. If you find worn or damaged parts, replace them with new ones.



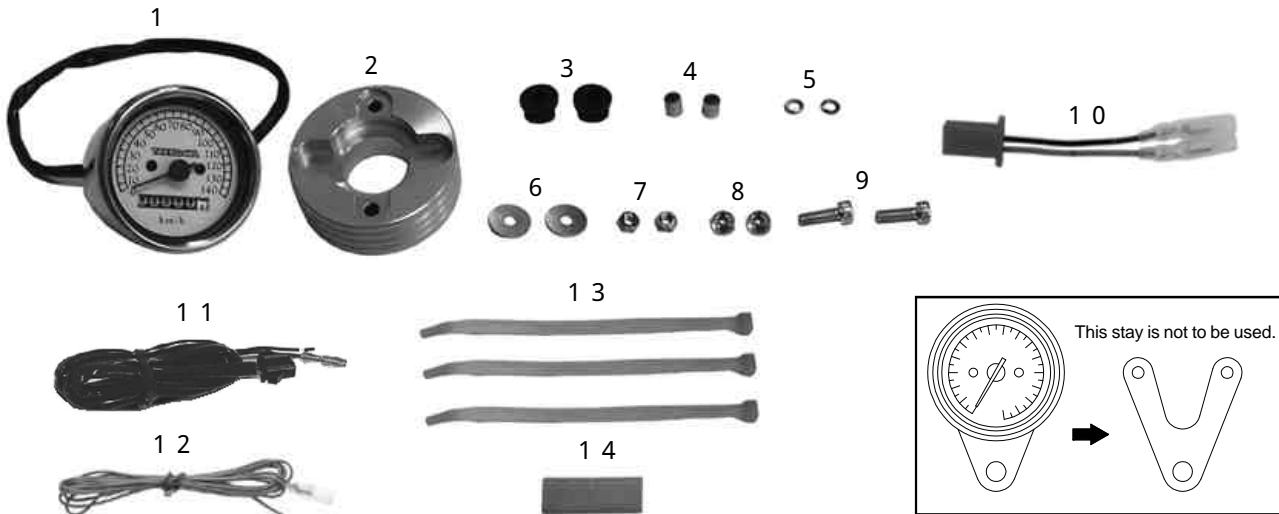
WARNING The following show the envisioned possibility of human death or serious injuries to human bodies as a result of disregarding the following cautions.

- Always start the engine in a well-ventilated place, and do not turn on the engine in an airtight place. (Otherwise, you will suffer from carbon monoxide poisoning.)
- When you notice something abnormal with your motorcycle while riding, immediately stop riding and park your motorcycle in a safe place to check what has gone wrong. (Otherwise, the abnormality could lead to accidents.)
- Before doing work, make sure your motorcycle is secure on level ground for safety's sake. (Otherwise, your motorcycle could overturn and injure you while you are working.)
- Check or carry out maintenance of your motorcycle correctly according to the procedures in the instruction manual or service manual. (Improper checking or maintenance could lead to accidents.)
- If you find damaged parts when checking and performing maintenance of your motorcycle, do not use these parts any longer, and replace them with new ones. (The continued use of these damaged parts as they are could lead to accidents.)
- Keep plastic bags for packing products out of infants' reach, or discard the bags. (If infants get a bag on, there is a risk of their suffocating.)
- As gasoline is highly flammable, never place it close to fire. Make sure that nothing flammable is near the gasoline. Since vaporized accumulation of gasoline is at high risk of explosion, work in a well-ventilated place. (Otherwise, it may cause a fire.)

Please be informed that, mainly because of improvement in performance, design changes, and cost increase, the product specifications and prices are subject to change without prior notice.

This manual should be retained for future reference.

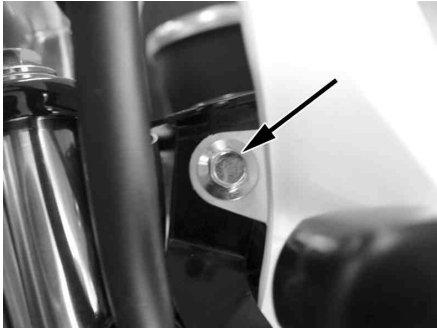
~ Kit Contents ~



No.	Part name	Qty			
		09-01-285	09-01-286	09-01-287	09-01-288
1	Meter assembly	1	1	1	1
2	Meter stay	1	1	1	1
3	Cushion rubbers	2	2	2	2
4	Collars, 8.5mm	2	2	2	2
5	Spring washers, 5mm	2	2	2	
6	Plain washers, 5x18	2	2	2	2
7	Hex nuts, 5mm	2	2	2	
8	Hex flange nuts, 5mm				2
9	Socket cap screws, 5x16	2	2	2	2
10	Sub-cord	1	1	1	1
11	Power cord				1
12	Pulse input cord				1
13	Insulation locks, 100mm				3
14	Heat shrinkable tube				1

~ Installation Procedures ~

- 1 . Unfasten both right and left flange bolts fixing a headlight cowl.
Please carefully remove the headlight cowl. Before the work, please disconnect the headlight coupler and horn terminal.
(There is a possibility of damaging the headlight cowl and the wires.)



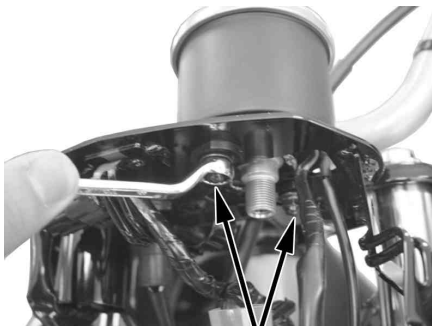
- 2 . Disconnect the speed-meter cable from the speed meter.



- 3 . Disconnect a 2-port red coupler and terminal on the meter from the stock wiring.



- 4 . Remove a nut flange cap and plain washer holding the speed meter.



Remove the parts as explained above

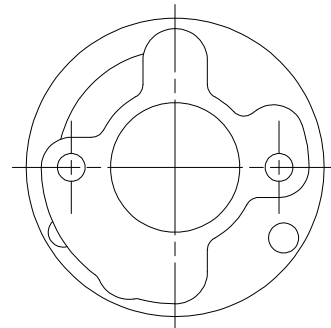
- 5 . After unfastening a mounting nut, remove the meter.



- 6 . Pass a meter assembly's cord through a hole in the middle of a meter stay, and fit two meter-holding bolts into two holes. Beware of the sides of the meter stay.



Forward



- 7 a . White & Black type Speed Meter, Black & Green type Speed Meter, LED type Speed Meter··· From the back of the meter stay, fix the provided spring washers and 5mm hex nuts in this order into the meter-holding bolts, and tighten them.

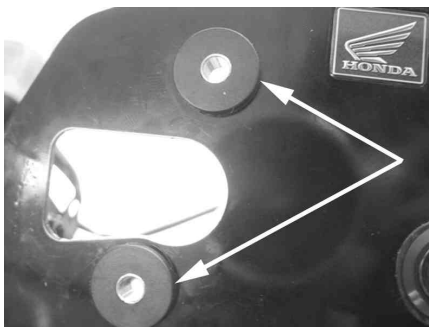
- b . LCD Speed & Tacho Meter··· Tighten provided 5mm hex flange nuts to install the LCD meter.

Note: Be sure to tighten to the specified torque.

Torque: 5 N·m (0.5 kgf·m)



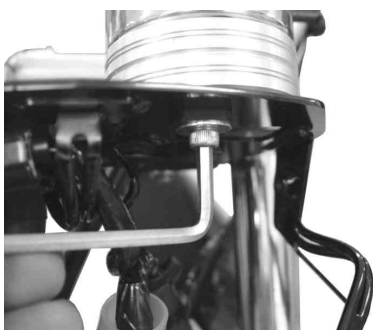
- 8 . Detach a rubber cushion from the stay on the frame, and attach a provided meter cushion rubber, into which please fit a provided collar.



- 9 . Place the meter, assembled in paragraph 6, on the stay on the frame. Fit a 5mm plain washer into a provided 5x16 socket cap screw, and tighten the screw.

Note: Be sure to tighten to the specified torque.

Torque: 4 N·m (0.4 kgf·m)



- 10 . Fix speed-meter cables to the assembled meter.



- 11 . After installing the meter, fix a supplied sub-cord into the red coupler on the frame.

- 12 . Referring to the following chart, connect the sub-cord and meter cord.

- A . White & Black-Type Speed Meter of Item No. 009-01-0285:

Connect the black meter cord to the black sub-cord connected to the wiring on the frame.

*The negative meter cord is not to be used, because a meter cable is grounded.

Meter cord	Sub-cord
Black (+)	Black (+)
	Green ()

- B . Black & Green-Type Speed Meter of Item No. 009-01-0286 :

Connect the red meter cord to the black sub-cord connected to the wiring on the frame.

Connect the black meter cord to the green sub-cord connected to the wiring on the frame.

Meter cord	Sub-cord
Red (+)	Black (+)
Black (-)	Green (-)

- C . LED-Type Speed Meter of Item No. 009-01-0287:

Connect the black meter cord to the black sub-cord connected to the wiring on the frame.

Connect the green meter cord to the green sub-cord connected to the wiring on the frame.

Meter cord	Sub-cord
Black (+)	Black (+)
Green (-)	Green (-)

- D . LCD Speed & Tacho Meter of Item No. 009-01-0288:

Connect the red meter cord to the black sub-cord connected to the wiring on the frame.

Connect the black meter cord to the green sub-cord connected to the wiring on the frame.

Connect a pick-up cord to the brown meter cord, and run the pick-up cord up to the ignition coil. Wind the pick-up cord around the high-tension cord in 7 circles at a point close to the ignition coil.

And cover the wound pick-up cord with a provided heat-shrinkable tube, which please shrink with a dryer. Wind an insulation tape around the cord so the cord does not get loose.

Warning: Never try to shrink the tube using such fire as gas lighter fire because there is gasoline in the tank.

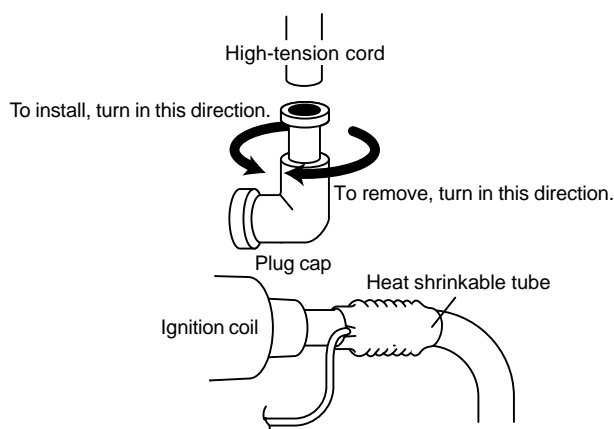
Meter cord	Sub-cord
Red (+)	Black (+)
Black (-)	Green (-)

- 13 . Start the engine, and check whether the meter lights or not. If it does not light, there is a possibility of a broken filament or poor cord connection, which please check.

Drive the engine in a well-ventilated safe place.

- 14 . Install the headlight cowl in the reverse order of its removal.

~ High-Tension Cord ~



SPECIAL PARTS TAKEGAWA

3-5-16 Nishikiorihigashi Tondabayashi Osaka Japan

TEL : 81-721-25-1357 FAX : 81-721-24-5059

URL : <http://www.takegawa.co.jp>

type Addendum

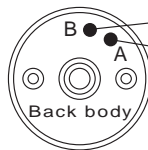
For tachometer set of large LCD meter

This page various kit common content.

Please switch the meter setting value according to appropriate vehicle.

Vehicle name	Product No.	CYC-	PIS-
MAGNA50	09-01-0211	2	1
ZOOMER (Carburetor vehicle)	09-01-0056	2	1
TODAY (Carburetor vehicle)	06-02-0303	2	1
AF62 Dio	06-02-0301	2	1
SPACY100	06-02-0305	2	1
Dio (two-cycle)	06-02-0302	2	1
JOG (two-cycle)	06-02-0304	2	1
XR50/100 Mptard	09-01-0288	2	1
XR250 Mptard	09-01-0055	2	1
KSR110	09-01-0054	2	1
KSR50/80	09-01-0054	2	2

Setting change procedure of tachometer



Numerical change button (in the text [B] button)
Setting item switch button (in the text [A] button)



Turn ON the main key of vehicle (starting the engine by vehicle), please state the power of meter has entered (there is a LCD).

Then press the [A]

Press the button on the [A].
Display of "CYC-" appears on the screen.
In this case, will change display alternately with the time you press the button on [B] "CYC-2" "CYC-4".



Numerical change in [B]

To fit to the appropriate vehicle, please select either.
After the selection of CYC- is now complete, please press

Then press the [A]

Display of "PIS-" appears on the screen.
In this case right side of numerals of the time you press the button on [B] "PIS-" will change.
Above - if you choose the "CYC 2" it will become a 1 2 3 4 1 2
It becomes 1 2 3 4 5 6 8 1 ... If also you have selected the "CYC-4".
Depending on appropriate vehicle, please select.



Numerical change in [B]

Then press the [A]

All settings are complete, it will return to standard screen from setting change screen by pressing [A] button.

Engine Type [CYC-], about number of cylinders [PIS-]

This [engine type, number of cylinders], an example of the ignition number of crankshaft rotation.
Therefore, some cases be different from engine type and the number of cylinders of actual vehicle.

0.5 times represents the once ignition to the crank shaft 2 rotation.

Ignition number of times per crankshaft revolution	0.5 times	1 times	1.5 times	2 times	2.5 times	3 times	4 times
CYC-2 (For example of two-cycle engine)		PIS-1		PIS-2		PIS-3	PIS-4
CYC-4 (For example of four-cycle engine)	PIS-1	PIS-2	PIS-3	PIS-4	PIS-5	PIS-6	PIS-8

(PIS- the example of the number of cylinders)

When ignition number of appropriate vehicle do not know
Engine types in [CYC-2] fixed, first set the number of cylinders in [PIS-4], please check the display numeric value by lightly blip the engine.

The number of cylinders [PIS-4] in because it is often actually displayed less than, we will display number is increased by changing the PIS-3 PIS-2 PIS-1 and numbers while watching a state, it becomes just a good set .

Monkey-based engine, Ape-based engine, other four-stroke 1 cylinder, many four-cylinder engine is set because it is one ignition per rotation crank shaft 1 will be [CYC-2, PIS-1].

In the part of the two-stroke one cylinder of vehicle and the inner rotor mounted vehicle, there is a case of ignition twice per crankshaft revolution [CYC-2, PIS-2].