



Instruction Manual for Tail Lamp Kit

Item No. : 09 03 0896 Classic Type (Red lens)
: 09 03 0897 Classic Type (Clear lens)

Fitting models & frame nos:

Ape100 : HC07-1000001 ~

Motorcycles equipped with Fenderless Kit of 09-09-2002

Ape50 : AC16-1600001 ~

Motorcycles equipped with Fenderless Kit of 09-09-2003

- Thank you for purchasing one of our Takegawa's products. You are requested to follow the below-mentioned instructions in installing this Kit
- Before installation, please check the contents of this Kit. Should you have any questions about the products, please kindly contact your local dealer.
- This is a Kit to change a tail light to our TAKEGAWA's from the stock one installed on the above-mentioned fitting models.
- This Kit is for use only in 12V motorcycles.

Please note that the descriptions in this manual like illustrations and photos may vary from the actual hardware.

Please read the following instructions before installation

We do not take any responsibility for any accident or damage whatsoever arising from the use of this product not in conformity with the instructions in this manual.

We shall be held free from any responsibility or compensation whatsoever for any glitch in the parts other than ours if the glitch takes place after the installation and use of this product.

If you make alterations to the Kit, we shall be held free from any guarantee of this product.

You are kindly requested not to contact us about the combination of our products with other manufacturers'.

If water gets into the wiring connector or socket, there is a possibility of a short circuit. When driving in the rain or washing your motorcycle, please take care not to let the water in the wiring. If water got into the wiring, remove the lens and wipe off the moisture inside.

Please do the work of changing the bulbs only when it is cool; otherwise, you will get burned from the heated bulb.

Never install this product at the place where heat is generated or where there is severe jolting, for the bulb may be deformed from heat or broken from vibration.

Never use gasoline or thinner for cleaning the product. There is a possibility of the product deforming.

Always change the bulb with that of 12V10/5W. If a bulb of over 10W is used for long hours, the lens and case may deform.

Special Parts TAKEGAWA's Stop and Tail Bulb (Red) Product No.: R5402

M&H MATSUSHIMA's Stop and Tail Bulb (Clear) Product No.: 1P5402

In case you install this product, please use this as an auxiliary light like a tail or a license light.



The following show the envisioned possibility of human death or serious injuries to human bodies as a result of disregarding the following warnings.

- Work only when the engine and a muffler are cool. (Otherwise, you will get burned.)
- Prepare right tools for the work. (Otherwise, the installation with improper tools could cause breakage of parts or injuries to you.)
- As some products and frames have sharp edges or protruding portions, please work with your hands protected. (Otherwise, you will suffer injuries.)
- Before riding, always check every hardware for slack in parts like screws. If you find slack ones, screw them securely up to the specified torque. (Or else, improper torque may cause parts to come off.)
- Be sure to use the supplied red bulb with the clear lens of 09-03-0897. Besides, when changing bulbs, please use a 12V10/5W red bulb, and scrape away a portion on the red surface so the bulb shines bright and clear on the license plate.
- Be sure to install a TAKEGAWA's Reflector Kit of 09-03-840 available as an optional extra.



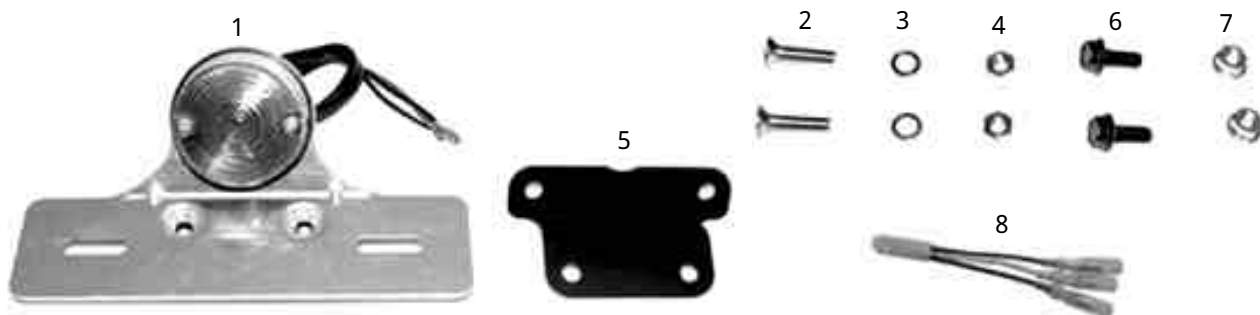
The following show the envisioned possibility of human death or serious injuries to human bodies as a result of disregarding the following warnings.

- Always drive the engine in a well-ventilated place, and do not start the engine in an airtight place. (Otherwise, you will suffer from carbon monoxide poisoning.)
- When you notice something unusual with your motorcycle while riding, immediately stop riding and park your motorcycle in a safe place. (Otherwise, the abnormality could lead to accidents.)
- Before starting the work, secure your motorcycle firmly on level ground for safety's sake. (Otherwise, your motorcycle could overturn and injure you while you are working.)
- If you find damaged parts when checking or performing maintenance of your motorcycle, do not use these parts any longer, and replace them with new ones. (The continued use of these damaged parts as they are could lead to accidents.)

Please be informed that specifications, design, and prices are subject to change without prior notice.

This manual should be retained for future reference.

~ Kit includes: ~



No.	Part Name	Qty	Repair Part Item No.	In packs of
1	Tail light COMP.	1	09-03-0801 (Red) 09-03-0811 (Clear)	1set
2	Flat head bolt, 6 x 25	2		
3	Spring washer, 6 mm	2		
4	Hex nut, 6 mm	2		
5	Stay	1	80114-GEY-T00	1
6	Hex flange bolt, 6 x 16	2	BW-00-0103	4
7	Hex flange nut, 6 mm	2	BW-02-0009	6
8	Tail light sub-harness	1	33170-GEY-T00	1

Those items marked with are already attached to the tail light COMP.

Please order repair parts by indicating the Repair Part Item No. as listed above. As you see from the list, there are some parts for which we are not in a position to accept your order in just the quantity to be used. In this case, please take the parts in the quantity packed.

~ Installation Procedures ~

1 . Remove a stock tail light. At this point, see how the wires are run for the tail and brake lights.

2 . Install the tail light COMP. of No.1 onto the stay of No. 5 with flat head bolts of No.2, spring washers of No.3 and hex nuts of No.4.
See the Fig.A

NOTE: Be sure to always follow the specified torque.

Torque for flat head bolt : **10 N·m (1.0 kgf·m)**

3 Install the tail light which you have just assembled in the step 2. above to the vehicle body with hex flange bolts of No.6 and hex flange nuts of No.7 above.

NOTE: Be sure to always follow the specified torque.

Torque for hex flange bolt : **12 N·m (1.2 kgf·m)**

4 . Do the wiring.

	Tail light	Connect to
(-) Ground wire	Black / White	Green
Tail light	Black	Yellow
Brake light	Red	Green / Yellow

In the case of installing onto the Ape50 with frame nos AC16-1600001 onwards:

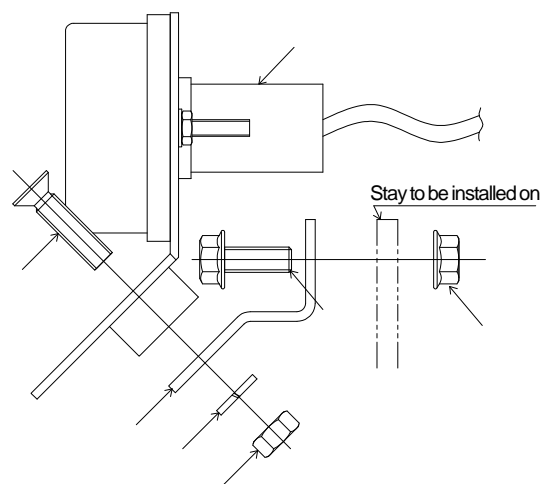
After fixing a supplied tail light sub-harness onto the frame, do the wiring referring to the above chart.

5 . Then, start the engine in a well-ventilated place, and check that the tail and brake lights work properly.

In case you detect some malfunction, please check bulb and wiring for the blowout and connection respectively, which may be considered to be the cause for the malfunction.

WARNING : Always drive the engine in a well-ventilated place.

Figure A



SPECIAL PARTS TAKEGAWA Co.,Ltd.

3-5-16 Nishikiorihigashi Tondabayashi Osaka Japan

TEL : 81-721-25-1357 FAX : 81-721-24-5059

URL : <http://www.takegawa.co.jp>