



# Compact Cool Kit Instruction Manual

## (Mounting-on-Frame Type, coming with a slim-line hose)

Item No. : 0 9 0 7 7 0 0 4 (3-FIN)  
: 0 9 0 7 7 0 0 8 (4-FIN)  
Fits :6V Monkey / Gorilla  
Frame No. :Z50J -1300017 ~ 1510400

- Thank you for purchasing one of our products. Please strictly follow the following instructions in installing and using the products.
- Before installing these products, please be sure to check the contents. Should you have any questions about them, please contact your local motorcycle dealer.

**Please note that, in some cases, the illustrations and photos may vary from the actual hardware.**

### Read all instructions first before starting the installation.

We do not take any responsibility for any accident or damage whatsoever arising from the use of this Kit not in conformity with the instructions in this Instruction Manual.

We shall be held free from any kind of warranty whatsoever of products other than this product if the glitch takes place on the other products than this one after the installation and use of this product.

If you make modifications to any product supplied here, we shall be held free from any guarantee of the product.

You are requested not to contact us about the combination of our products with other manufacturers'.

Please note that this Kit is designed for exclusive use only in the above-mentioned fitting models with the above-mentioned frame numbers, and that it cannot be mounted on any other models.

Installation of this Kit requires detachment and reinstallation of a tank and other work. We recommend you, therefore, to refer to the relative HONDA service manual for the correct work.

After the installation of this Kit, it becomes impossible to use a tappet cap breather. So, please use a cylinder head cover breather (Item No. 09-06-070 or -072).

**CAUTION** The following show the envisioned possibility of injuries to human bodies or property damage as a result of disregarding the following cautions.

- Always try to drive your motorcycle at legal speed, abiding by the laws.
- Work only when the engine and muffler are cool. (Otherwise, you will get burned.)
- Do the installation with right tools. (Otherwise, breakage of parts or injuries to you may take place.)
- Always use a torque wrench to screw bolts and nuts tight and securely to the specified torque. (Otherwise, these parts may get damaged or fall off, resulting in accidents.)
- As some products and frames have sharp edges or protruding portions, please work with your hands protected. (Otherwise, you will suffer injuries.)
- Before riding, always check every hardware like screws for slack. If you find slack ones, screw them securely up to the specified torque. (Otherwise, improper tightening may cause parts to come off.)
- Always use new gaskets and packings. And check those parts, to be reused, for wear and damage. If you find worn or damaged parts, replace them with new ones.

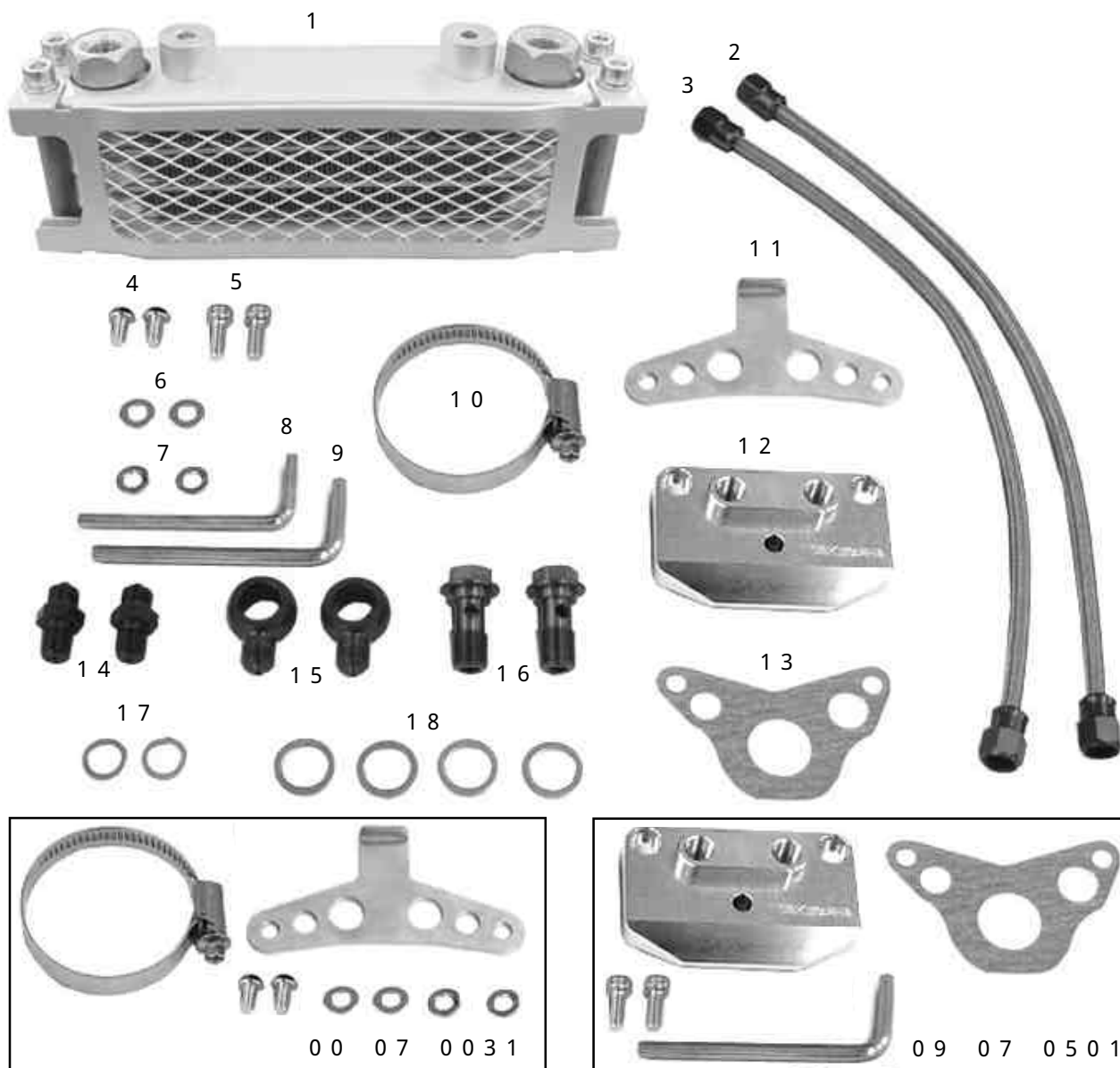
**WARNING** The following show the envisioned possibility of human death or serious injuries to human bodies as a result of disregarding the following warnings.

- Always start the engine in a well-ventilated place, and do not turn on the engine in an airtight place. (Otherwise, you will suffer from carbon monoxide poisoning.)
- When you notice something unusual with your motorcycle while riding, immediately stop riding and park your motorcycle in a safe place to check what has gone wrong. (Otherwise, the malfunction could lead to accidents.)
- Before doing work, make sure your motorcycle is secure on level ground for safety's sake. (Otherwise, your motorcycle could overturn and injure you while you are working.)
- Carry out inspection and maintenance of your motorcycle correctly according to the instructions and guidelines in the instruction and service manuals. (Improper inspection or maintenance could lead to accidents.)
- If you find damaged parts when inspecting or performing maintenance of your motorcycle, do not use these parts any longer, and replace them with new ones. (The continued use of these damaged parts as they are could lead to accidents.)
- As gasoline is highly flammable, never place it close to fire. Make sure that nothing flammable is near the gasoline. Since vaporized accumulation of gasoline is at high risk of explosion, work in a well-ventilated place. (Otherwise it may cause a fire.)

Please be informed that, mainly because of improvement in performance, design changes, and cost increase, the product specifications and prices are subject to change without prior notice.

This manual should be retained for future reference.

### Kit includes:



No.	Part Name	Qty	Repair item No.	In packs of
1	Oil cooler COMP. (3-FIN)	1	00-07-0055	1
	Oil cooler COMP. (4-FIN)		00-07-0008	1
2	Oil hose, 310 mm	1	00-07-0023	1
3	Oil hose, 320 mm	1	00-07-0024	1
4	Button head socket screw, 6 x 10	2	00-00-0092	5
5	Socket cap screw, 6 x 15	2	00-00-0042	10
6	Plain washer, 6 mm	2	00-00-0086	10
7	Spring washer, 6 mm	2	00-00-0203	10
8	Hex wrench, 4 mm	1	_____	/
9	Hex wrench, 5 mm	1	_____	
10	Clamp band	1	00-00-0051	1
11	Oil cooler bracket	1	15670-165-T10	1
12	Oil cooler unit	1	12332-165-T00	1
13	Right side cylinder head side cover gasket ( 29)	1	12394-165-T01	2
14	Adapter, 10 mm	2	00-07-0032	1
15	Oil cooler banjo, M10	2	00-07-0041	1
16	Banjo bolt, M12	2	00-07-0034	1
17	Sealing washer, 10 mm	2	00-07-0010	10
18	Sealing washer, 14 mm	4	00-07-0042	5

Please order repair parts with the Repair Part Item No. Without the repair part item NO., we may not be able to accept your orders. Some parts are only available as a set. In this case, please order them with the set number.

## ~ Installation Instructions ~

- 1 . Make sure your motorcycle is stable on level and secure ground for safety's sake.
- 2 . Remove a seat and fuel tank.
- 3 . Prepare an oil container, and remove a right side cylinder-head cover.  
Be careful about the engine oil which will flow out when you remove the right side cylinder-head cover.
- 4 . Put a gasket between the cylinder head and oil cooler unit, and fix them with two 6x15 socket cap screws, a stock hex bolt and sealing washer.

⚠ Caution : Be sure to follow the specified torque.

**Torque:10N·m (1.0 kgf·m)**

- 5 . Fit 10mm sealing washers to two adapters, which please install onto an oil cooler unit and tighten.

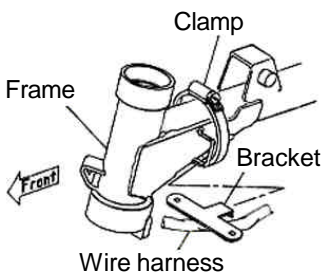
⚠ Caution : Be sure to follow the specified torque.

**Torque:15 N·m (1.5 kgf·m)**

- 6 . Place the supplied oil cooler bracket on a flat surface of the rear side of the frame, and fasten the frame and oil cooler bracket together with a clamp band. Place the bracket at the lowest end of the flat frame with the folded-back side of the bracket facing downward.

At this point, fix the clamp band on the upside of the frame so its thread part is under the tank. If the oil cooler bracket interferes with a harness ring welded to the frame, bend or cut off the ring so the bracket does not interfere.

If the oil cooler bracket interferes with a harness ring welded to the frame, bend or cut off the ring so the bracket does not interfere.



In the case of use with stock steering stem, since the steering angle is large, the oil cooler might be interfere with the steering lock.

In that case, please ensure the clearance by attaching to the frame through the band in the largest hole of the stay. (Attach it to the rear end of the flat surface of the frame.)



- 7 Install the oil cooler COMP. to the oil-cooler bracket with a 6x10 buttonhead screw, 6mm spring washer, and 6mm plain washer. (Run the wire harness in between the oil cooler bracket and the oil cooler.)

⚠ Caution : Be sure to follow the specified torque.

**Torque: 10 N·m (1.0 kgf·m)**

- 8 .Put an oil cooler banjo in between two 14mm sealing washers, and attach it to the oil cooler with a banjo bolt loosely for now.  
Install the downside sealing washer, aligning it with the concave portion on the hexagonal oil cooler header. Please note that tightening the out-of-alignment washer will cause the oil to leak.

- 9 Run the 310mm oil hose below the oil cooler unit and 320mm oil hose above the oil cooler unit, and tighten them to the specified torque.

⚠ Caution : Be sure to follow the specified torque.

**Torque: 6 N·m (0.6 kgf·m)**

- 10 .Attach the 310mm oil hose to the right side of the oil cooler and 320mm oil hose to the left side, and tighten them up.

**Torque: 6 N·m (0.6 kgf·m)**

⚠ Caution : Be sure to follow the specified torque.

**Torque: 6 N·m (0.6 kgf·m)**

- 1 1 . Adjust the direction of banjos and tighten the banjo bolts.  
When tightening the banjo bolts, be sure to hold the oil cooler header tight with a spanner.

⚠ Caution : Be sure to follow the specified torque.

**Torque:22.5 N·m (2.3 kgf·m)**

- 1 2 . Install the fuel tank and seat.
- 1 3 . Add about 60 cc of engine oil to 4-fin and about 40 cc to 3-fin, and start the engine.

And check each hardware for oil leakage. Stop the engine and wait for about a minute. Then, check with an oil level gauge that the amount of oil is within the specified level. Always add the oil when the oil level falls below the specified level.



**SPECIAL PARTS TAKEGAWA** Co.,Ltd.

3-5-16 Nishikiorihigashi Tondabayashi Osaka Japan TEL:81-721-25-1357 FAX:81-721-24-5059 URL: <http://www.takegawa.co.jp>